



REFERENCE	BT_2014_FR16_4_UK
DATE	30 July 2014
SUBJECT	New driveshaft release, 2014 exhaust support fitting update, cockpit sealing
PART	Driveshaft, muffler support and strap, tub and safety harness

1. New driveshaft release **ALLOWED FROM NOW**

In order to improve the driveshaft lifetime, Signatech has designed a new driveshaft based on a new material, an improved design and a new assembly method.



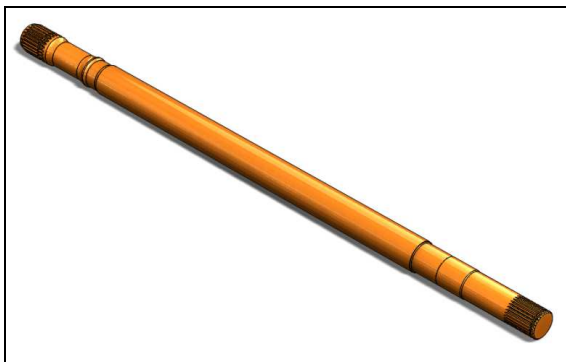
Driveshaft V3

This new driveshaft is now available from Signatech and FR1.6 championship spare parts dealers under the reference below:

Driveshaft V3: G04-15A001V3

Assembly instructions:

This new driveshaft needs a specific mounting process using a press to fit the G04-15A003V1 Tripod Joint on the G04-15A001V3 Driveshaft V3



G04-15A001V3 Driveshaft V3

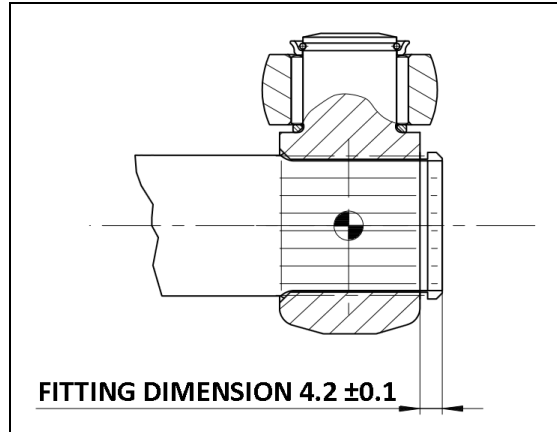


G04-15A003V1 Tripod Joint

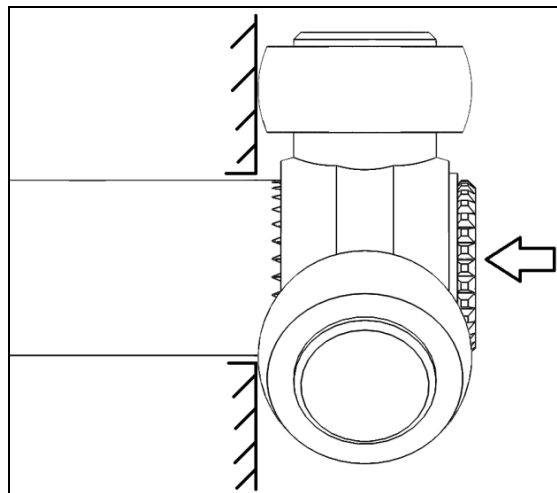


G04-15A005V1 Tripod Circlip SW24

Insert the Tripod Joint at 4.2 mm from the end of the Driveshaft, as shown in the picture below:



Mount the G04-15A005V1 Tripod Circlip SW24 on the Driveshaft. Then, block the Tripod Joint as shown in the picture below and push the Driveshaft to ensure the position of the Tripod Joint: the circlip must be in contact with the Tripod Joint and with the closer groove face from the Driveshaft end.



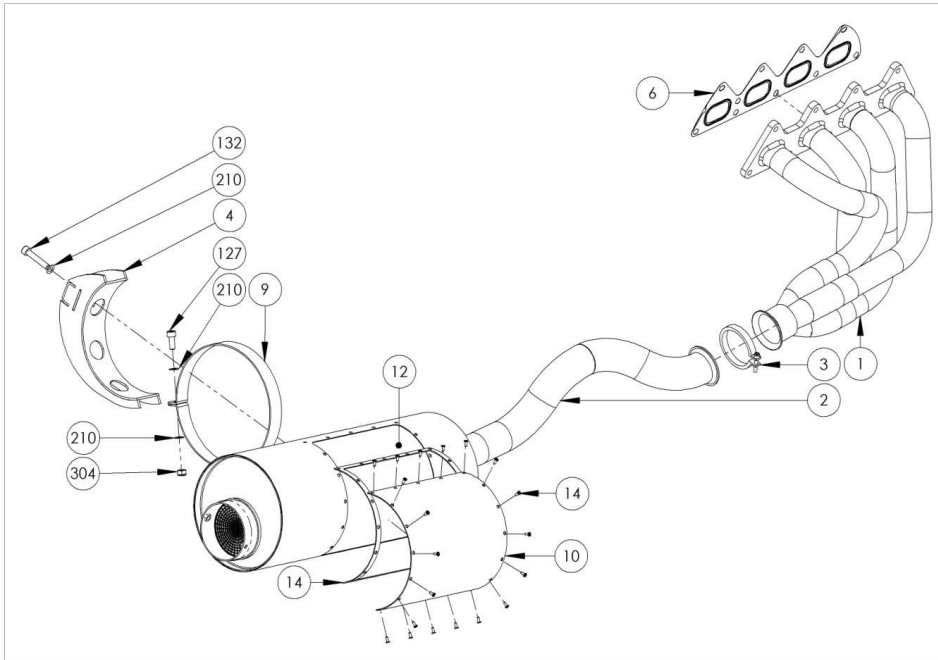
Both old (G04-15A001V1 & G04-15A001V2) and new (G04-15A001V3) driveshafts are allowed on the car.

Note: The driveshaft V3 is heavier of about 800g compared to the previous V2 version.

2. 2014 exhaust support fitting update

MANDATORY FROM AUGUST 2014, 11th

The genuine flat washers Ø8 x 16 (qty 3, identified by the n.210) must now be replaced by **Onduflex washers Ø8 (qty 3, ref G04-21B010V1)** to ensure the fitting of the Muffler Support V2014 (ref G04-06C004V2, n.4) and the Muffler Strap (ref G04-06C009V1, n.9).



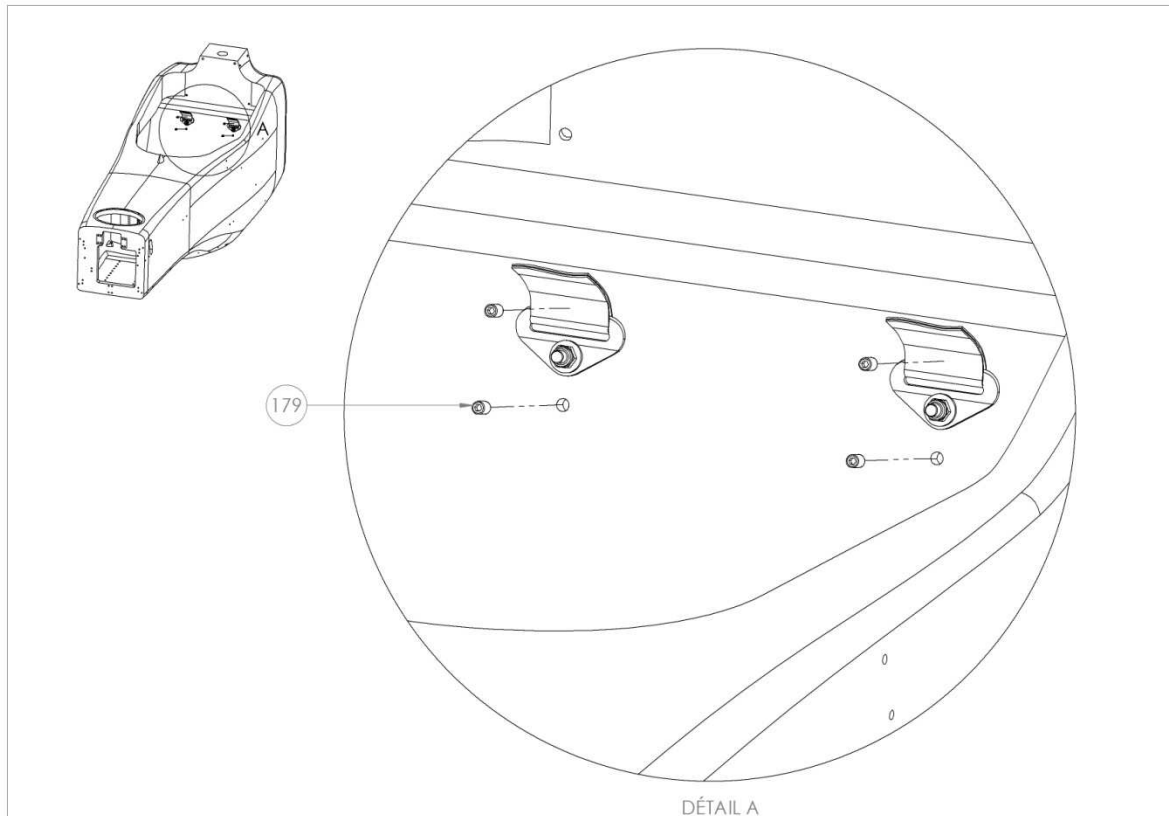
Rep.	Reference	Part Name	Qty	Comment
	G04-06C000	Exhaust 2014		
1	G04-06C001V1	Exhaust Manifold	1	
2	G04-06C002V3	Exhaust Muffer and Pipe V2014	1	
3	G04-06C003V1	Exhaust Pipe Clamp	1	
4	G04-06C004V2	Muffler Support V2014	1	
6	G04-06C006V1	Exhaust Gasket	1	
9	G04-06C009V1	Muffler Strap	1	
10	G04-06C010V1	Locking Plate	1	
12	G04-06C012V1	Stone Wool	1	
14	G04-06C014V1	Locking Plate Counter Plate	1	
127	G04-21A027V1	CHC M8 x 20	1	
132	G04-21A032V1	CHC M8 x 45	1	
210	G04-21B010V1	Onduflex Ø8	3	
304	G04-21C004V1	Nylstop M8	1	
602	G04-21F002V1	Stainless Steel Rivet	20	

Note: these washers, classified in category A of the nomenclature, will be mandatory from August 2014, 11th.



3. Cockpit sealing **MANDATORY FROM AUGUST 2014, 11th**

In order to seal the cockpit area from the fuel cell cavity, it is compulsory to mount obstruction screws STHC M8x16 (ref **G04-21A079V1 STHC M8 x 16**) with Loctite 577 in the unused threaded holes of the safety harness (unused holes location depending on your safety harness setup)



Rep.	Reference	Part Name	Qty	Comment
	G04-19000	Safety Harness		
179	G04-21A079V1	STHC M8 x 16	4	Loctite 577

Note: this modification will be mandatory from August 2014, 11th.