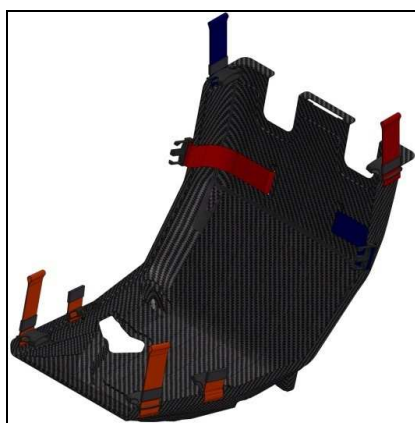


REFERENCE	BT_2015_FR16_1_UK
DATE	31 March 2015
SUBJECT	2015 safety kit
PART	Extractable seat, roll hoop, fuel line

2015 safety kit

MANDATORY FROM 2015

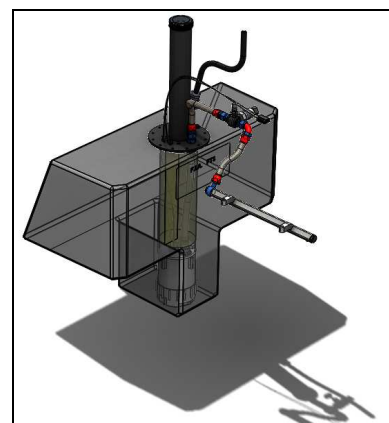
For the 2015 season, a safety kit will be mandatory for all FR1.6 cars including the following components:



Extractable seat

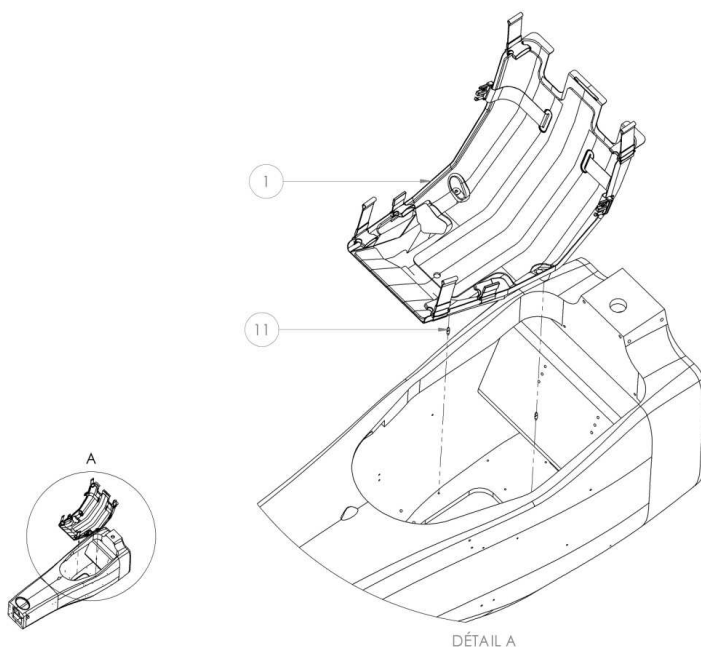


Higher Roll Hoop
(+30mm)



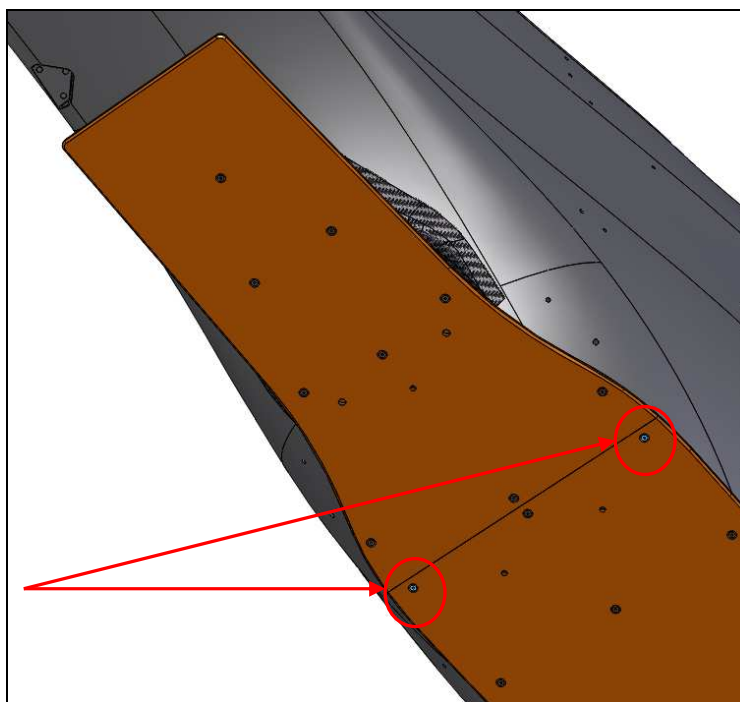
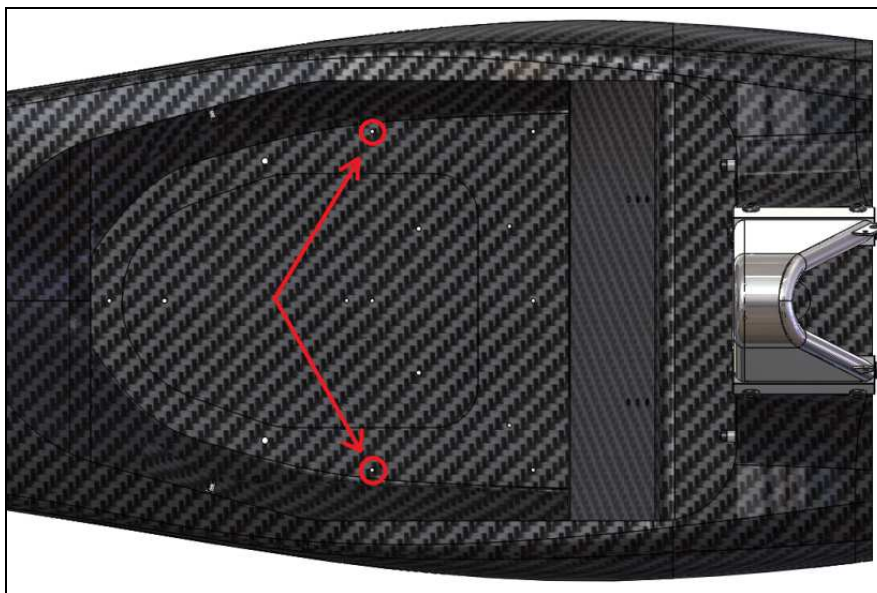
Bespoke fuel line with aeroquip
connectors and pipes

1. Extractable Seat



Rep.	Reference	Part Name	Qty	Comment
	G04-23A000	Extractable Seat		
1	G04-23A001V1	Extractable Seat	1	
11	G04-23A011V1	Centering Pin	2	

To install the Extractable Seat in the car, you have to mount the two Centering Pin (**Rep. 11**) in the two threatened holes shown in the picture below.



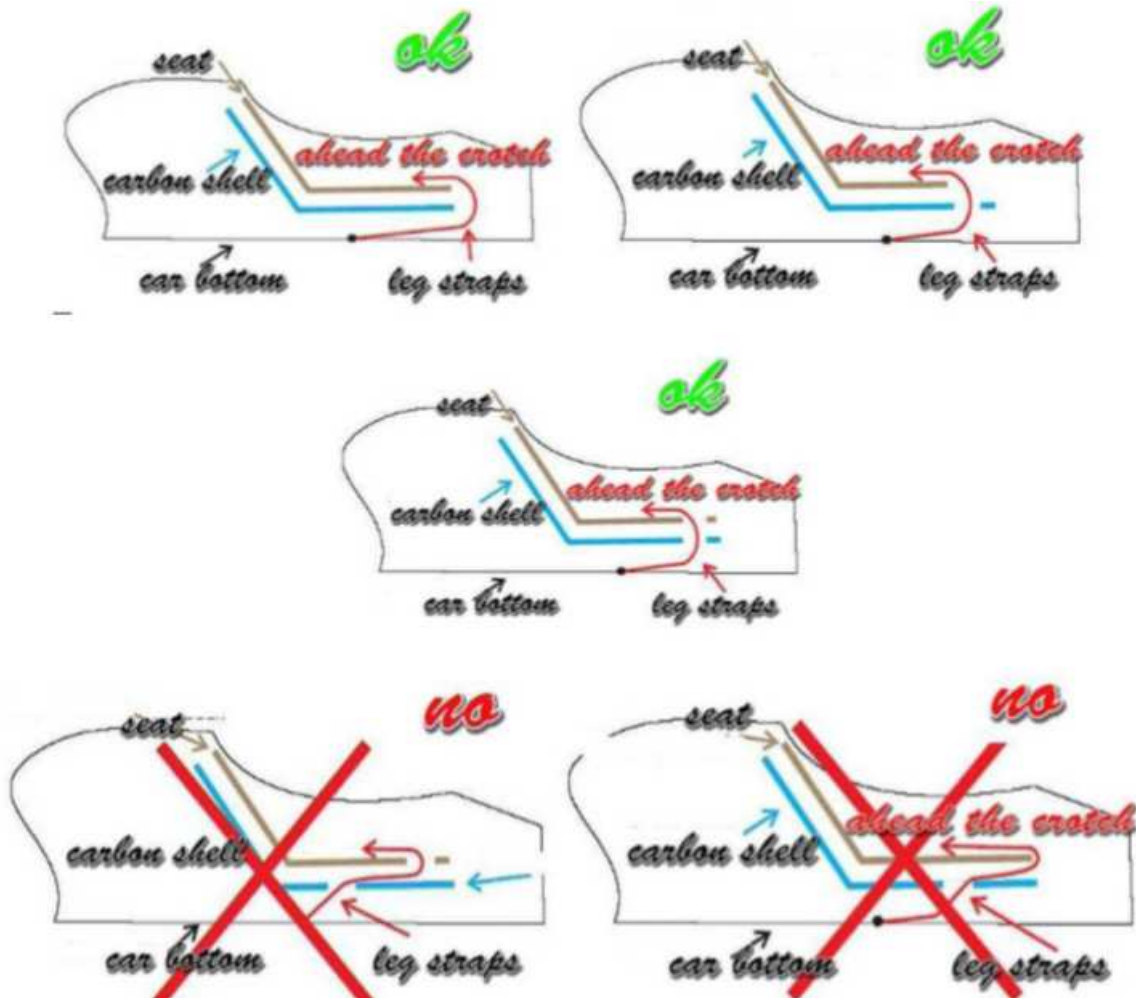
You will have to replace the two FHC M5x16 (**G04-21A014V1 FHC M5 x 16**) shown in the picture above by two FHC M5 x 12 (**G04-21A012V1 FHC M5 x 12**) included in the safety kit.

Important notes:

Please keep in mind that, in the event of a serious crash, the driver must be extracted with no harm and difficulty. For this purpose, you have to make sure that the following points below are strictly respected:

- Driver seat must not exceed the carbon shell length and width
- Driver seat is correctly fitted into the carbon shell
- Holes for leg straps in the carbon shell and in the driver seat must in front of each other
- Leg straps must come out in front of the driver's crotch
- Driver does not sit on the leg straps
- Straps have to be always visible and easily usable when the driver is in the car
- Middle blue and red straps can be easily extended (i.e. make loops and fit them using bodywork tape to the extractable seat)

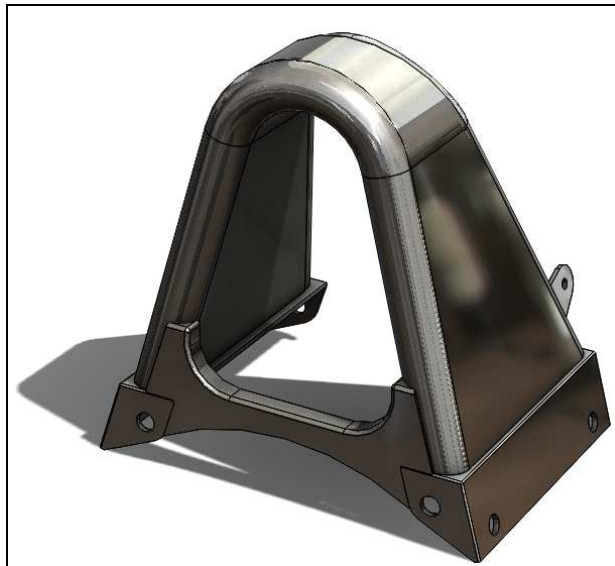
Below drawings illustrating the mandatory safety points to respect (sources : F.I.A.) :



The hole made in the driver seat to pass the lower seat belts must be wide enough. Some tape can be added on the lower belt in order to avoid any friction during the extraction.

Failure to respect this rule will be considered as a non conformity

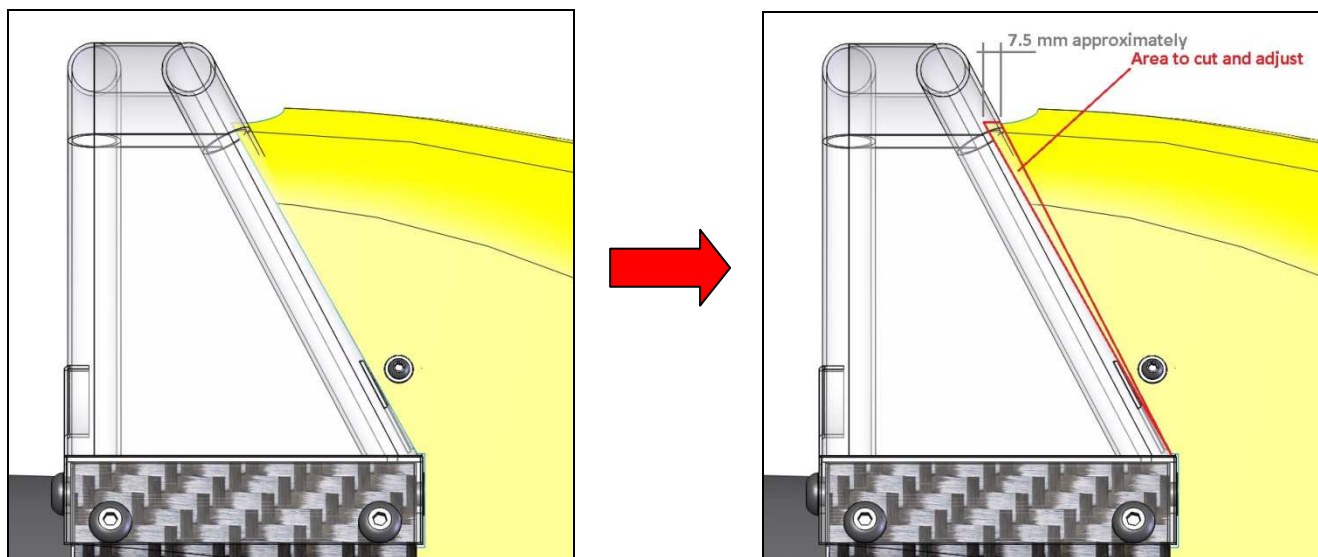
2. Higher Roll Hoop (+30mm)



To mount the new Roll Hoop on the cars, you will have to adjust your engine cover in the area around the roll hoop following the drawings below.

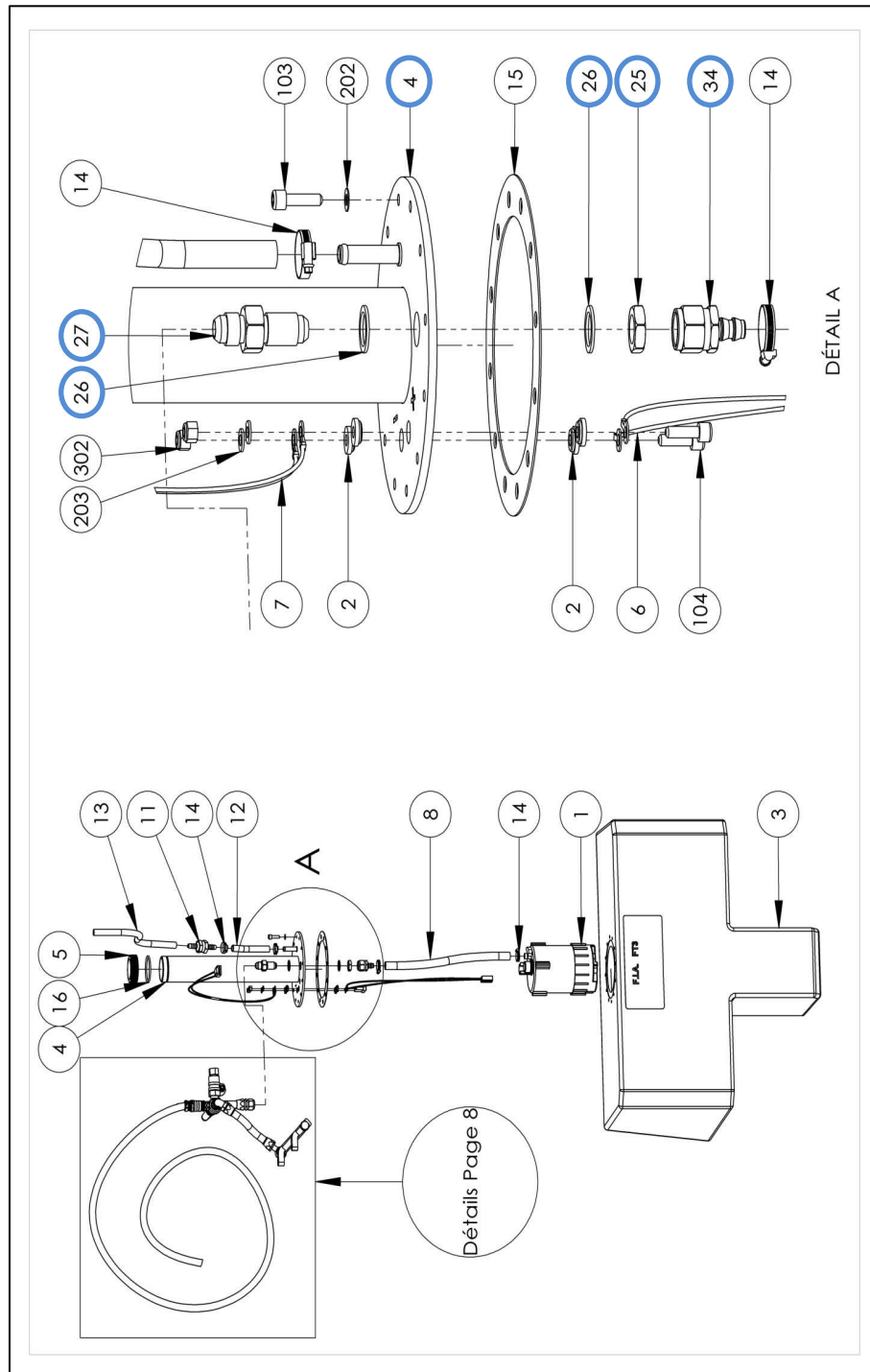
The fixations holes of the engine cover onto the new roll hoop remain the same than the genuine ones.

The 8 BHC M10 x 20 (included in the Safety Kit), fitting the roll hoop onto the chassis, must be tightened at 45 Nm.



3. Fuel System with Aeroquip

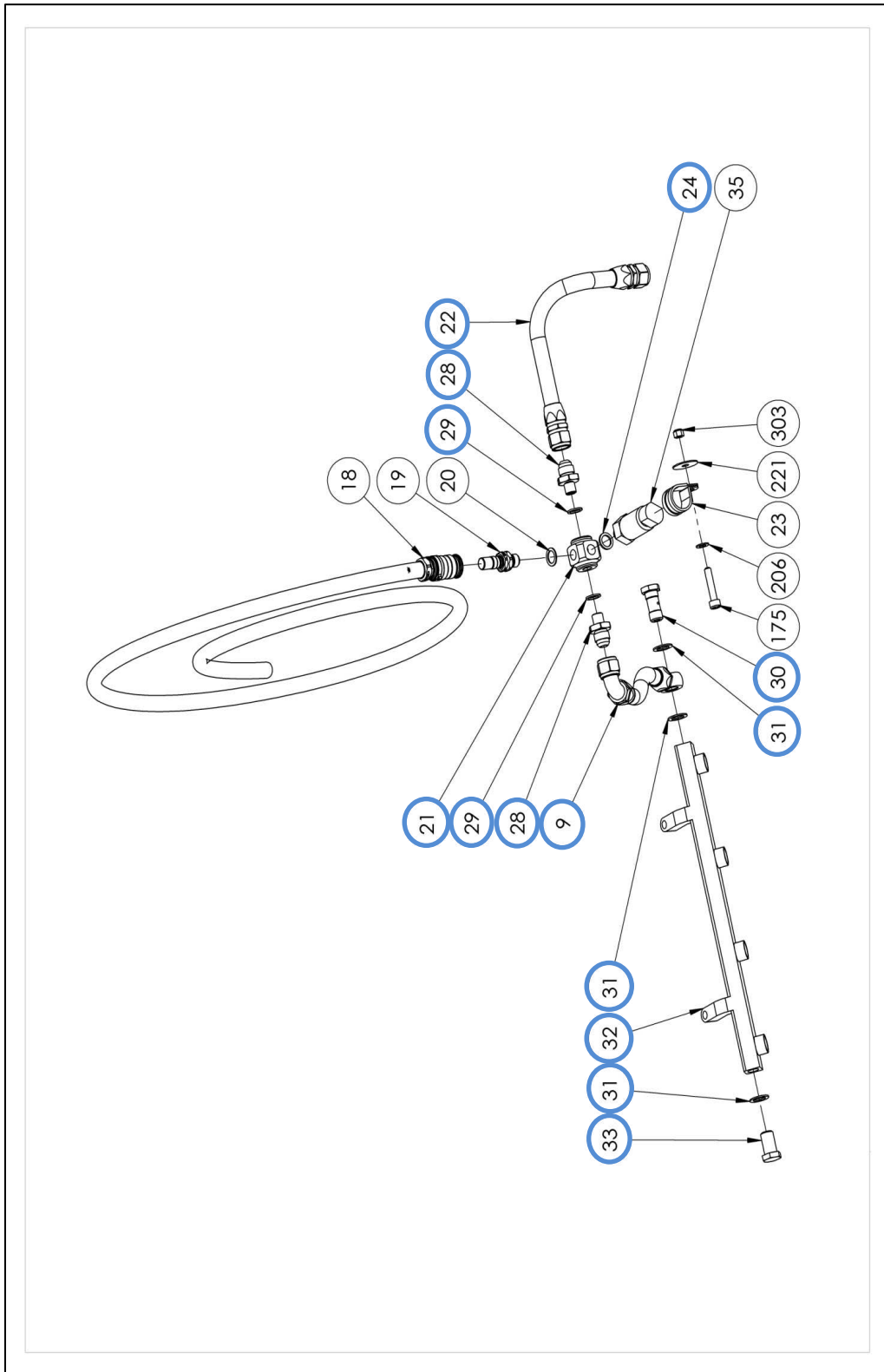
Fuel kit parts and nomenclature change:





Rep.	Reference	Part Name	Qty	Comment
	G04-01000	<u>Fuel System</u>		
1	G04-01A001V1	Fuel Pump	1	
2	G04-01A002V1	Fuel Pump Contact Washer	4	
3	G04-01A003V3	Fuel Tank	1	
4	G04-01A004V2	Fuel Filler Tube	1	
5	G04-01A005V1	Fuel Cap	1	
6	G04-01A006V2	Fuel Pump Loom	1	
7	G04-01A007V2	Fuel Tank Loom	1	
8	G04-01A008V3	Fuel Pump Hose 380 mm, Ø8	1	
11	G04-01A011V1	Fuel Tank Valve	1	
12	G04-01A012V1	Fuel Tank Valve Hose 90 mm, Ø7.5 x 14 mm	1	
13	G04-01A013V1	Fuel Tank Valve Hose 210 mm, Ø7.5 x 14 mm	1	
14	G04-01A014V1	Serflex Ø13 - 15 mm	4	
15	G04-01A015V1	Fuel Tank Joint	1	
16	G04-01A016V1	O'ring Ø50 x 3 mm	1	
25	G04-01A025V1	Bulkhead Nut	1	
26	G04-01A026V1	Teflon Washer	2	
27	G04-01A027V1	Fuel Filler Tube Bulkhead	1	
34	G04-01A034V1	Fuel Pump Hose Connector	1	
103	G04-21A003V1	CHC M5 x 18	12	
104	G04-21A004V1	CHC M5 x 16	2	
202	G04-21B002V1	Onduflex Ø5	12	
203	G04-21B003V1	Flat Washer Ø5 x 10	2	
302	G04-21C002V1	Nylstop M5	2	

***Note :** The parts in blue in the pictures and in the nomenclature are the parts which are different (or new) between the 2014 Fuel System and the 2015 Fuel System.*

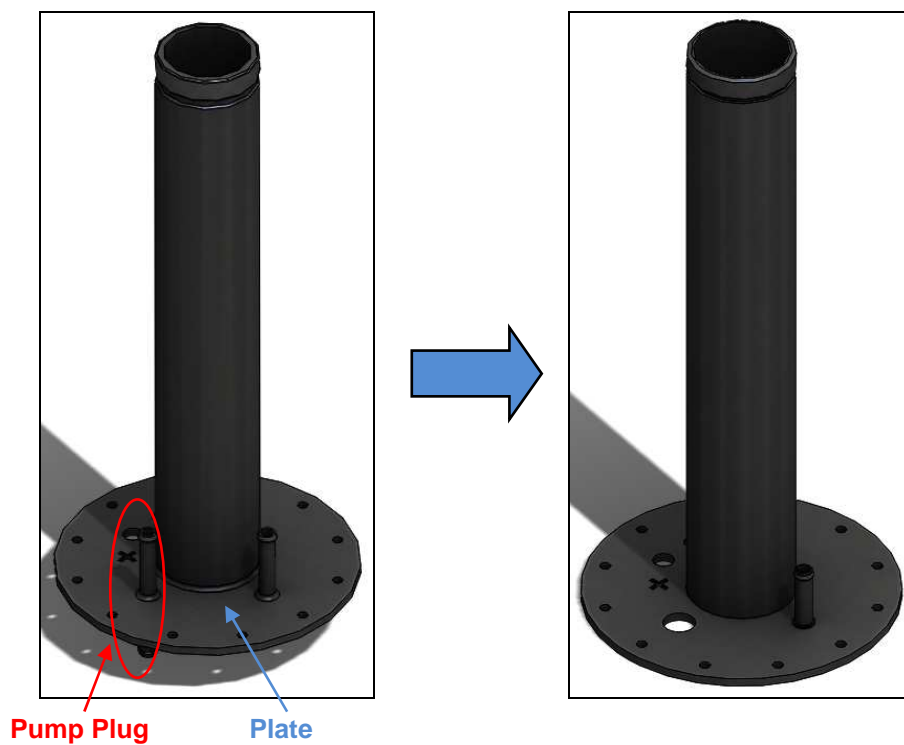




Rep.	Reference	Part Name	Qty	Comment
	G04-01A000	Fuel System		
9	G04-01A009V2	Fuel Tank Hose	1	Included in Fuel Connector Kit
17	G04-01A017V2	Fuel T Connector Kit	1	
18	G04-01A018V1	Fuel Tank Draining Connector & Hose 1500 mm, Ø7.5 x 14 mm	1	
19	G04-01A019V1	Quick Release Connector	1	Loctite 577 / Included in Fuel Connector Kit
20	G04-01A020V1	Copper Washer Ø11 x 1.3 mm	1	Included in Fuel Connector Kit
21	G04-01A021V2	T Connector	1	Included in Fuel Connector Kit
22	G04-01A022V2	Fuel Tank Hose	1	
28	G04-01A028V1	T Connector Adapter	2	Included in Fuel Connector Kit
29	G04-01A029V1	Aluminium Washer	2	Included in Fuel Connector Kit
30	G04-01A030V1	Simple Banjo Screw M12 x 1.5	1	
31	G04-01A031V1	Aluminium Washer	3	
32	G04-01A032V1	Aluminium Injection Bar	1	
33	G04-01A033V1	Injection Bar Cap	1	
23	G04-09A006V1	Pipe Clamps Ø20 mm	1	Included in Fuel Connector Kit
24	G04-12A011V1	Copper Washer Ø10 x 0.8 mm	1	Included in Fuel Connector Kit
35	G04-18A035V1	Fuel Pressure Sensor	1	Loctite 577 / Included in Fuel Connector Kit
175	G04-21A075V1	CHC M6 x 30	1	
206	G04-21B006V1	Flat Washer Ø6 x 12	1	
221	G04-21B021V1	Flat Washer Ø6 x 24	1	
303	G04-21C003V1	Nylstop M6	1	

Note : The parts in blue in the pictures and in the nomenclature are the parts which are different or new between the 2014 Fuel System and the 2015 Fuel System.

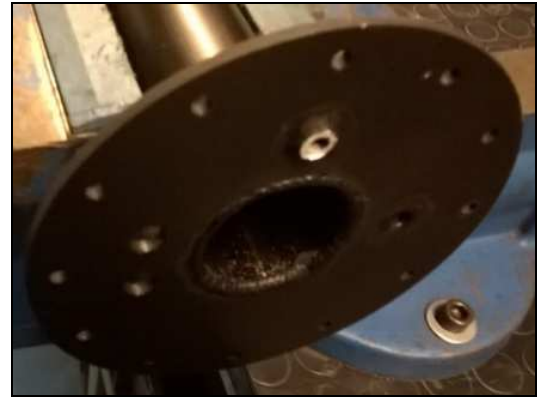
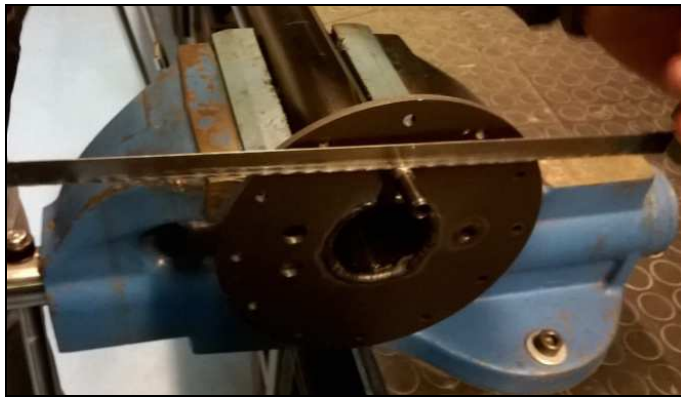
To mount the new fuel system, you will have to modify your part "**G04-01A004V2 Fuel Filler Tube**".



On the "Fuel Filler Tube", you need to remove the Pump Plug following the procedure below:

- Cut with a hacksaw the Pump Plug (approximately at 2 - 3 mm from the plate) at both sides of the plate.





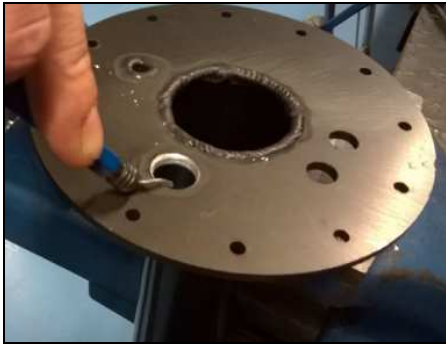
- Drill the hole at $\varnothing 13$ mm. Before drilling, if it's necessary, you can use a flat file to deburr the cutting edges.



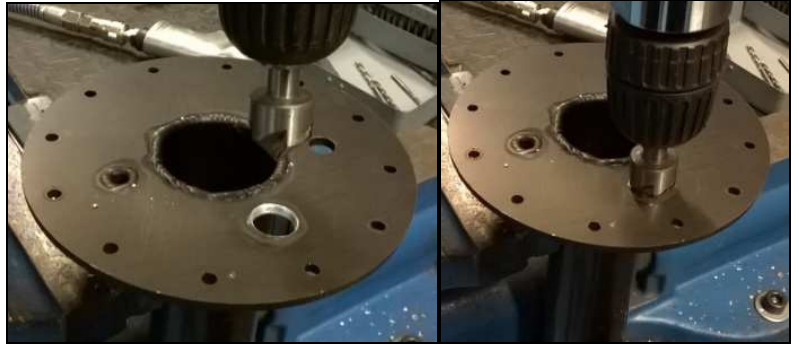
- Drill the hole at $\varnothing 15$ mm



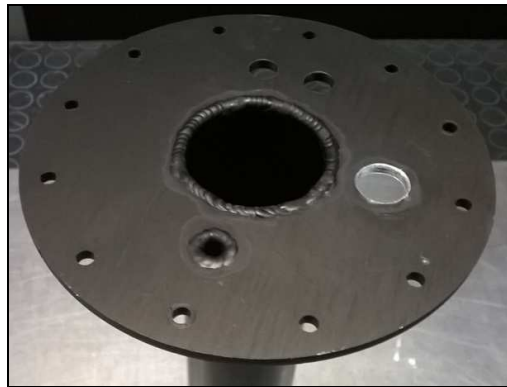
- Deburr the hole with a chamfer milling tool or with a deburring device. Be sure, you have a good finishing for the mounting of the seal. If it's necessary, you can use a flat file to remove the remaining weld bead.



Or

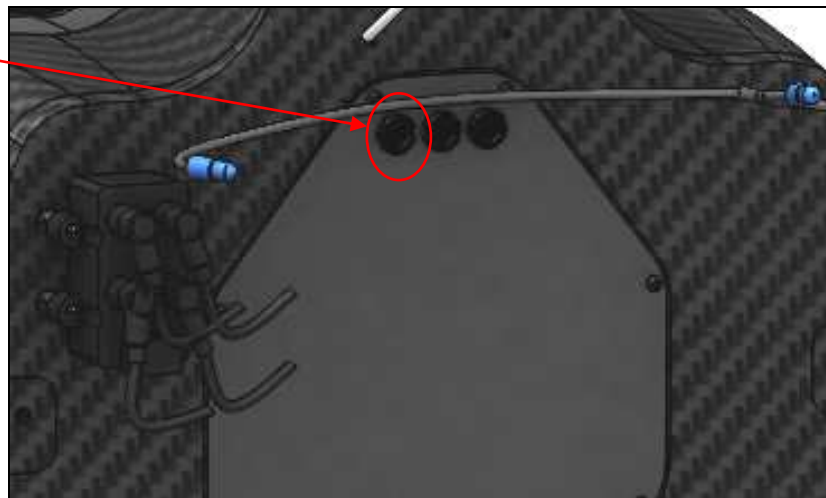


- The 2015 Fuel Filler Tube update is done

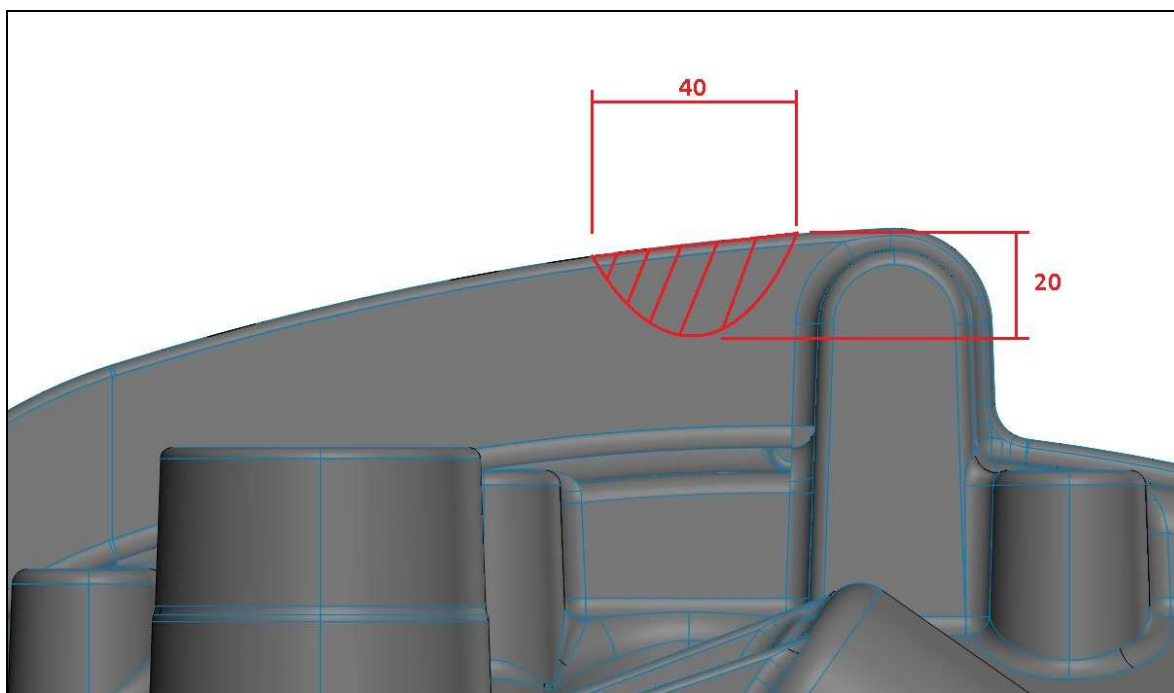


For the new fuel system mounting, you will have to change the grommet hole used in the tub rear face. The fuel hose must now pass through the left one (and the fuel pump wire must pass through the middle grommet hole)

**Grommet hole
to use in 2015**



You will have to trim an opening into the cylinder head cover to ensure the good mounting of the fuel line following the drawings below:



Be sure to protect all the parts in this area, from dust and shavings, before starting to trim the opening.



2015 safety kit delivery

The FR1.6 safety kit will be delivered as follows:

- Customers entering the Nordic championship will be supplied during week 14 through the Nordic promoter and the related spare parts service
- Other customers will be directly supplied in week 14