

FORMULA RENAULT 1.6

Technical regulations

NOMENCLATURE 2014

April 2nd 2014 Release



RENAULT SPORT



NOMENCLATURE TECHNICAL REGULATIONS 2014

The technical regulations is based on the following:

Parts for the FORMULA RENAULT 1.6 single-seaters are represented in this nomenclature and split into three categories:

CATEGORY « A »	No modifications are authorised. The parts in this category must remain in their original positions and fulfil the function/s for which they were originally intended. These parts must be genuine FORMULA RENAULT 1.6 parts.
CATEGORY « B »	Parts of the category "A" being the subject of specific prescriptions. Only the modifications or prescriptions indicated in the regulations or in the FORMULA RENAULT 1.6 nomenclature are authorised.
CATEGORY « C »	The parts classed in this category are considered to be unrestricted, on the express condition that the function for which it was originally designed is not deviated from, that it does not fulfil any additional function and that it is located in the same place as the original part. Adapted parts are permitted but must be submitted for approval to the RENAULT SPORT Scrutineers.

The set of items or subassemblies that make up a part or assembly are deemed to belong to the same category as the part or assembly in question.

Scrutineering may consist of comparing the part to be checked against a similar new genuine FORMULA RENAULT 1.6 part.

All parts not shown in the technical regulations are systematically classed in category "A" unless specified otherwise above.

The pictures published in this document only aim at making the nomenclature easier to understand. These pictures cannot be used for any comparison with original vehicle parts.

Some parts from the A and B category present a special mark (hologram, engraving). The presence of this mark guarantees the origin of the part and their use is mandatory. The absence of a mark is a technical non conformity.

An additional marking (engraving or painting) is allowed on all the parts from A and B category.

NOMENCLATURE TECHNICAL REGULATIONS 2014

Nuts, screws, bolts, and uniballs

Nuts, screws, bolts and uniballs are in the category C unless mentioned in the nomenclature.

However, the following must be respected:

- the original diameters,
- the original screw thread,
- the material should be steel of equal or superior quality as that of the original part. The use of other materials (e.g., titanium) is forbidden.

Any type of screw (stud, bolt or standard screws) is allowed, unless mentioned in the nomenclature.

To assure the tightness of the screws, the use of locking wire is permitted,

All the screws that have the function of setting-up an element are in category "A" unless other mention in the nomenclature.

Washers

All washers are in « C » category unless mentioned in the nomenclature and can be removed if required.

It is allowed to add washer only to improve mechanical assemblies.

The use of washer for setting purpose is forbidden, unless specifically mentioned in the nomenclature.

Electrical loom

All the electrical looms belong to category "B" and must be genuine. The loom may be protected by non-retractable sheathes.

Protections

It is allowed to add protection of any kind over the mechanical elements of the car unless specifically mentioned in the nomenclature. These protections must have the sole function of protecting the elements.

For the driver wellness, it is allowed to add protections in the cockpit, these protections must be removed fast without tool.

NOMENCLATURE TECHNICAL REGULATIONS 2014

Supports

It is allowed, unless mentioned in the nomenclature, to add various types of support to improve the fitting of tubes, hoses and electrical looms of the car.

No part modification is allowed to fit these supports.

These supports must have the only function to maintain the elements for which they have been added.

Bodywork

Only in order to manage correct assembly and adjustment of the bodywork part, it is allowed to slightly modify the bodywork parts and their respective supports.

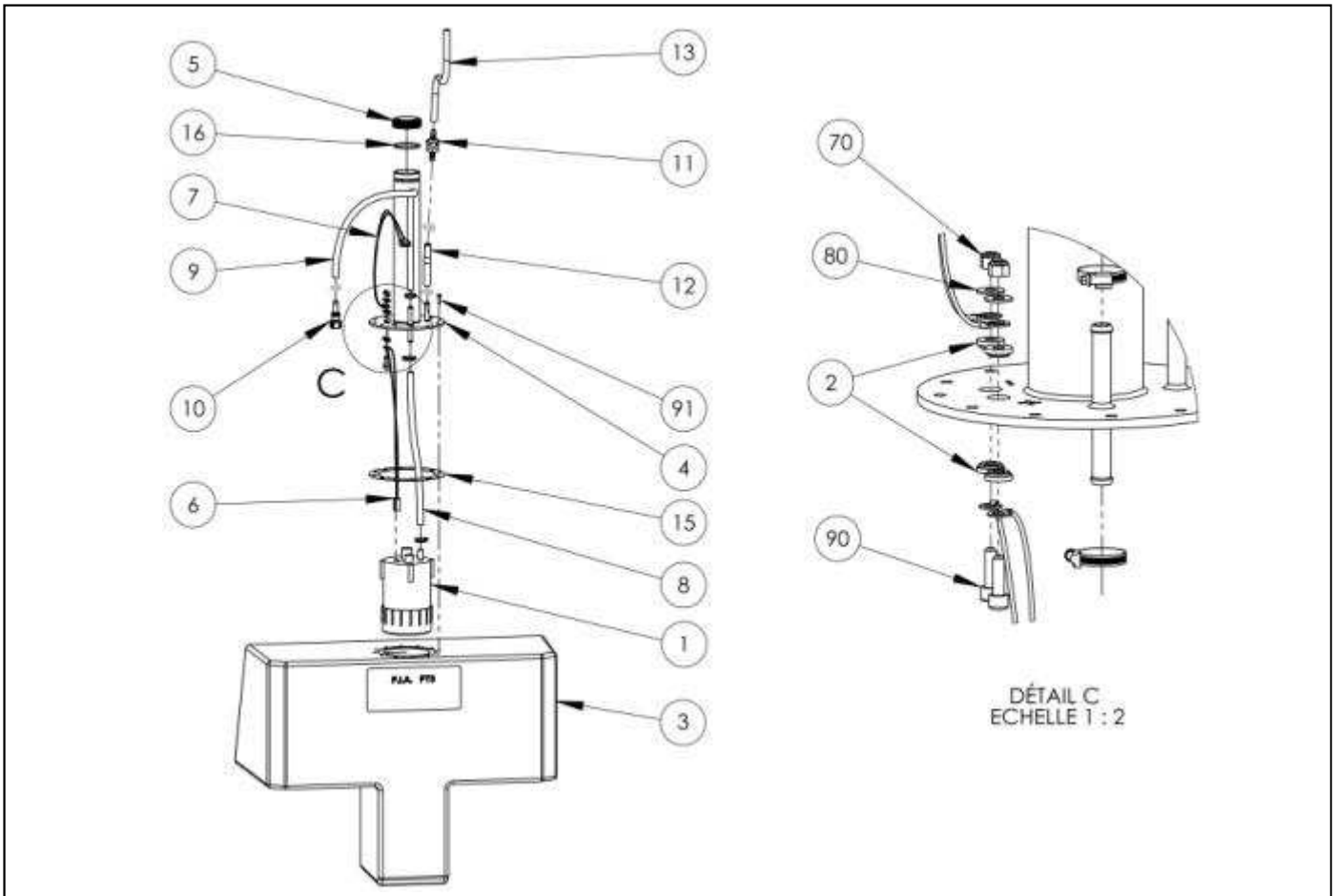
These modifications are submitted to the approved by RENAULT SPORT technical scrutineers.

Adhesive tape may be put on the bodywork but only on fastening elements or other vulnerable leading or trailing edges. In all circumstances, the only purpose of adhesive tape must be to protect the element onto which it has been applied. It must not in any circumstance join various bodywork elements unless special cases mentioned in the nomenclature.

All the bodywork parts and the tub can be painted or decorated with adhesive film.

**NOMENCLATURE
TECHNICAL REGULATIONS 2014**

April 2nd, 2014

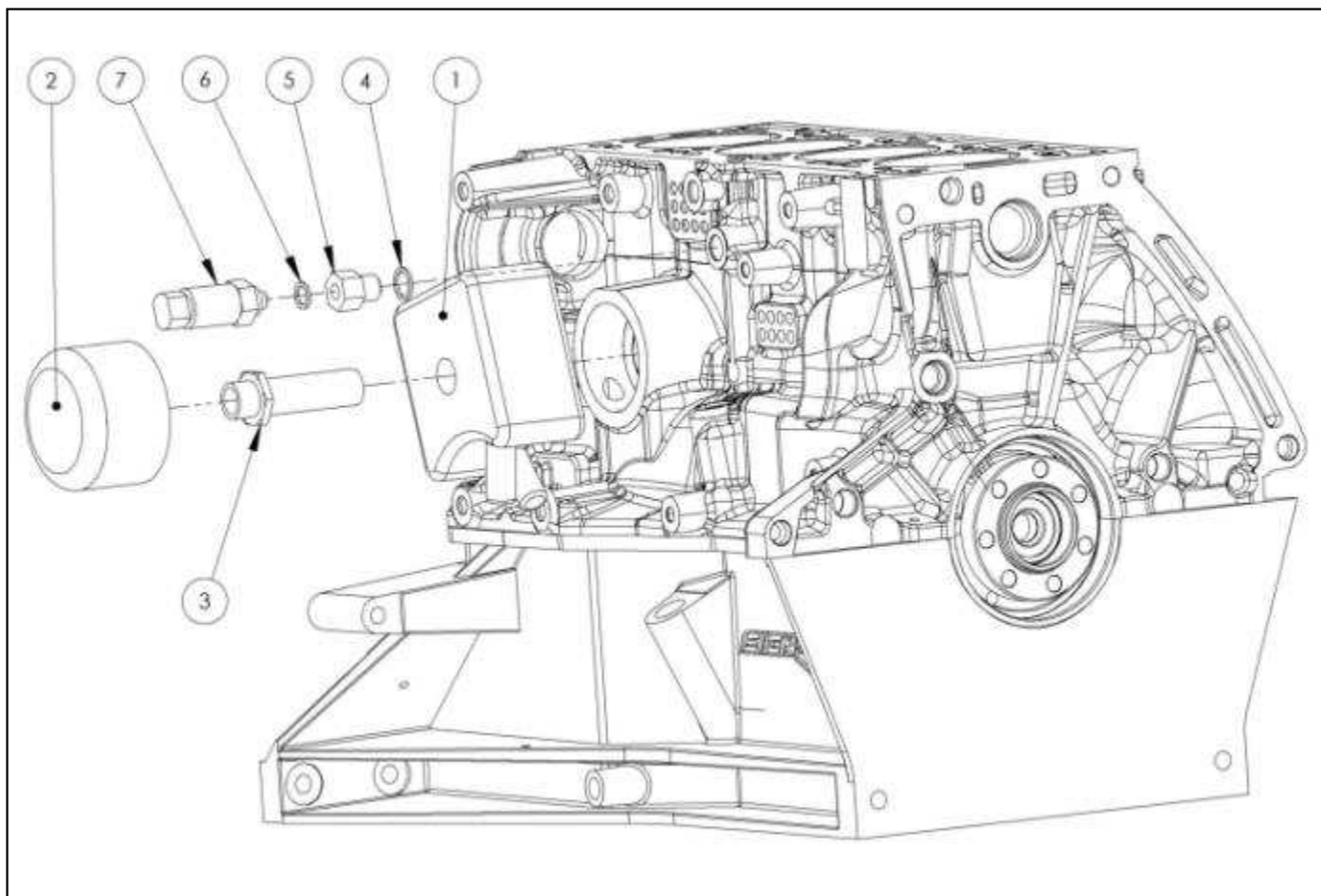


	A	B	C
1	X		
2	X		
3	X		
4	X		
5	X		
6	X		
7	X		
8	X		
9			X
10	X		

	A	B	C
11	X		
12			X
13			X
15	X		
16			X
70			X
80			X
90			X
91			X

**NOMENCLATURE
TECHNICAL REGULATIONS 2014**

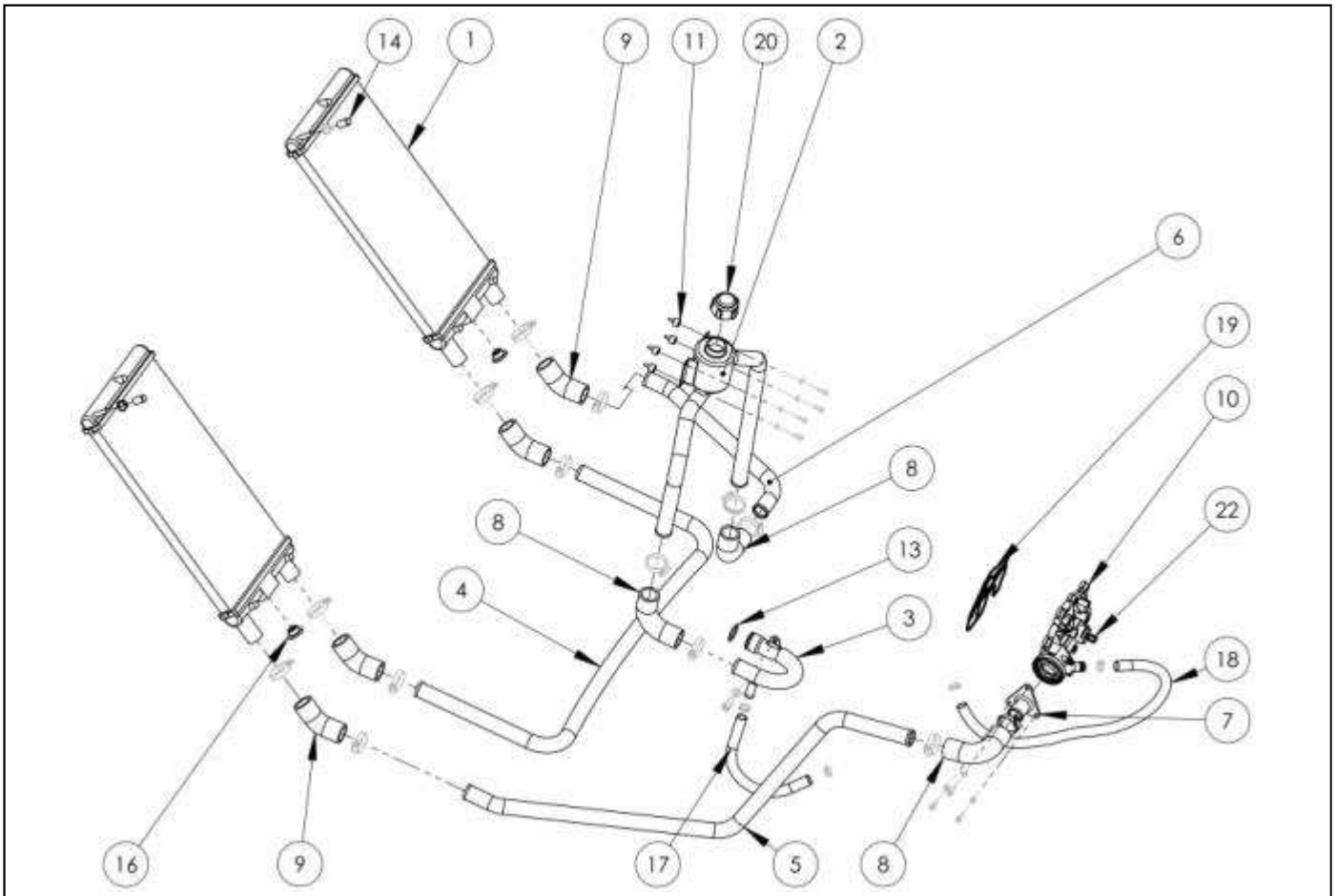
April 2nd, 2014



	A	B	C
1	X		
2	X		
3	X		
4			X
5	X		
6			X
7	X		

NOMENCLATURE
TECHNICAL REGULATIONS 2014

April 2nd, 2014



	A	B	C
1		X	
2		X	
3		X	
4		X	
5		X	
6		X	
7	X		
8			X
9			X
10	X		

	A	B	C
11			X
13			X
14			X
16			X
17		X	
18		X	
19	X		
20			X
22	X		

1B : Water radiator

It is allowed to:

- improve sealing between radiators and their support.
- improve their fitting.

2B – 3B – 4B – 5B – 6B : Water pipes

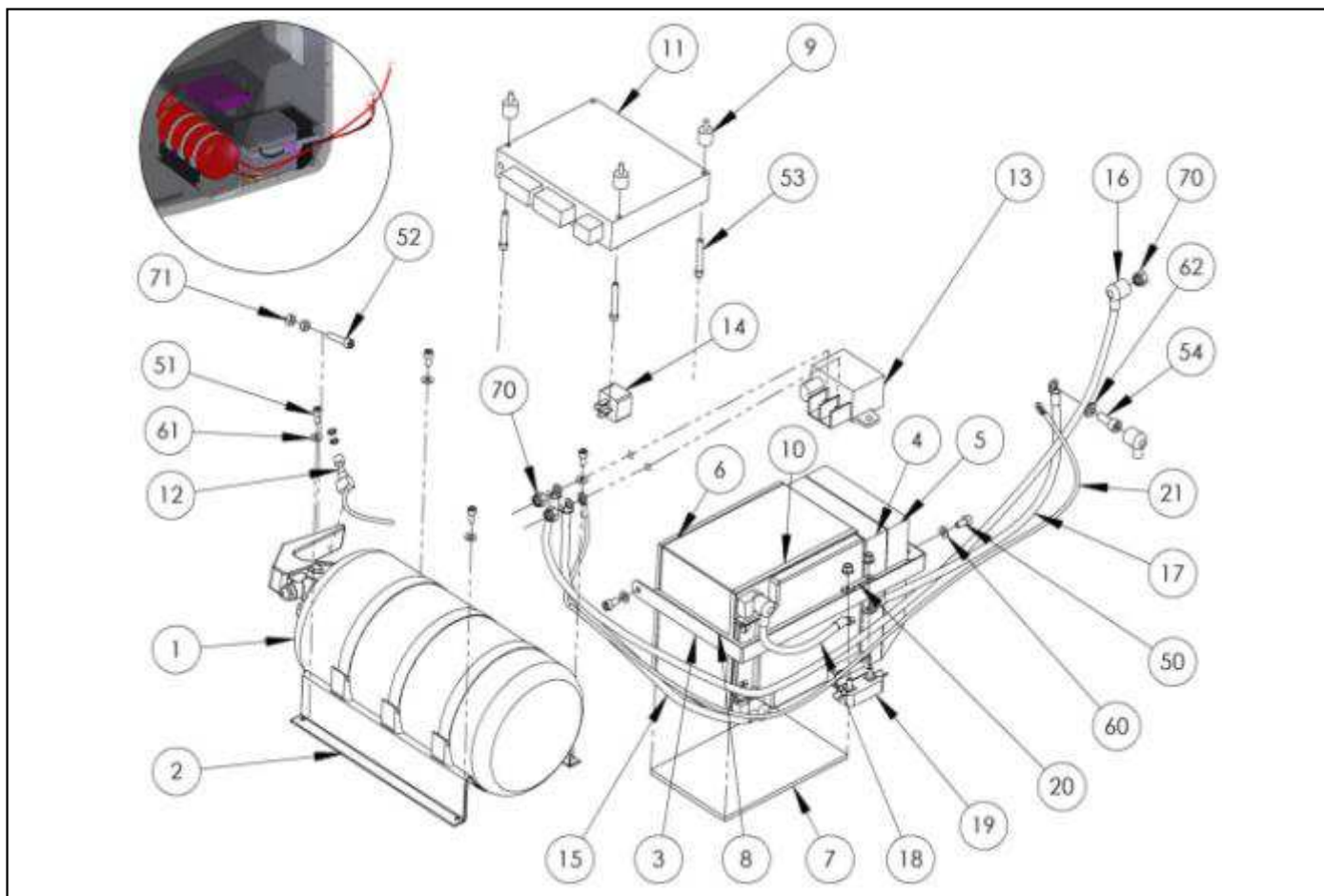
It is allowed to fit a wrap/sheathing protection on the pipes.

17B – 18B : Rubber hoses

The rubber hoses are free but the internal diameter of the replacement hoses cannot be smaller than the diameter of the original ones.

NOMENCLATURE
TECHNICAL REGULATIONS 2014

April 2nd, 2014



	A	B	C
1		X	
2	X		
3	X		
4			X
5			X
6			X
7			X
8			X
9			X
10	X		
11	X		
12	X		

	A	B	C
13	X		
14	X		
15	X		
16	X		
17	X		
18	X		
19	X		
20	X		
21	X		
50			X
51			X
52			X

	A	B	C
53			X
54			X
60			X
61			X
62			X
70			X
71			X

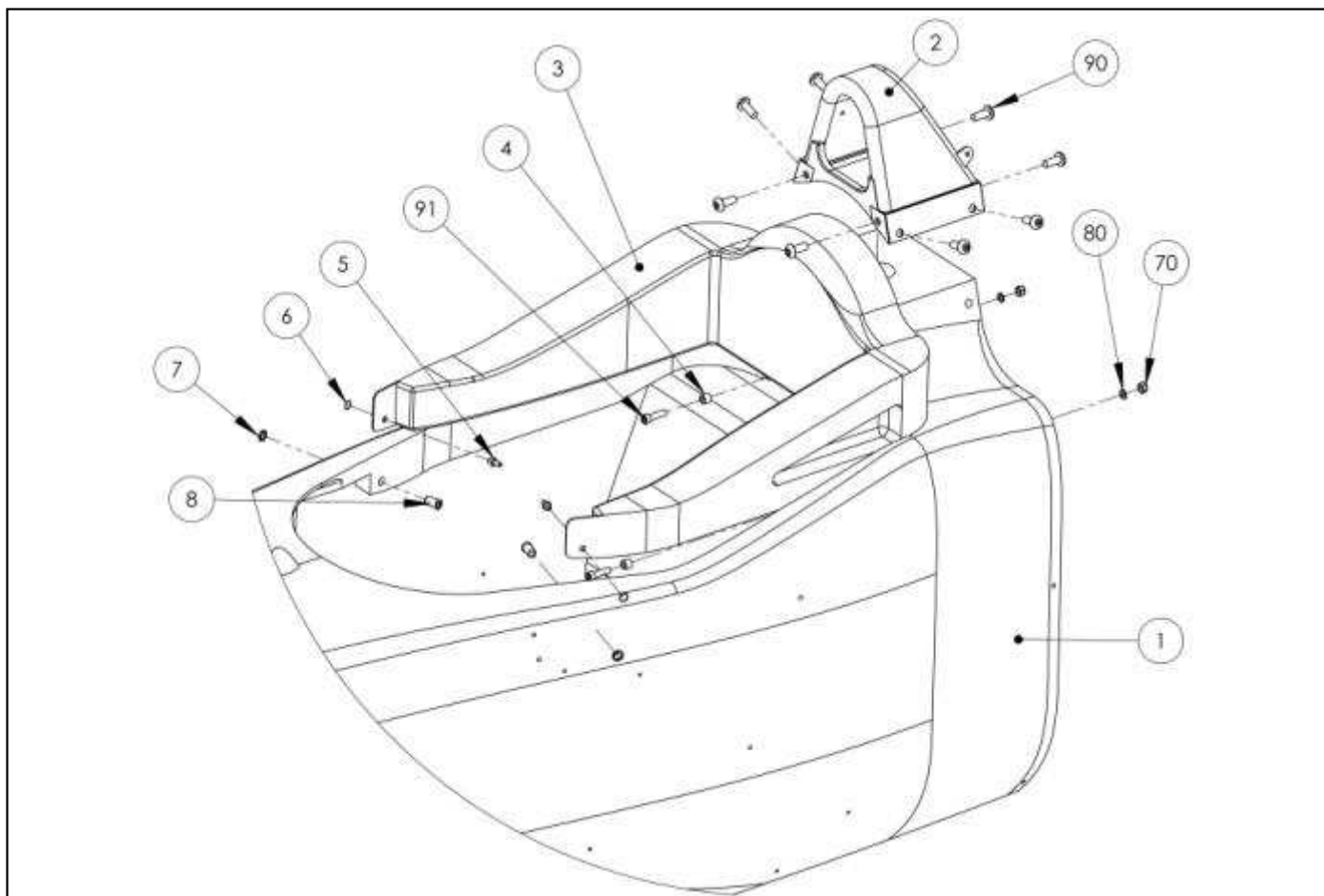
1B : Extinguisher

The extinguisher must always remain armed (Pin fire extinguisher removed) during every track sessions and respect the 2014 Formula Renault 1.6 technical regulations.

The non respect of this article will be sanctioned by a penalty.

NOMENCLATURE
TECHNICAL REGULATIONS 2014

April 2nd, 2014



	A	B	C
1		X	
2		X	
3	X		
4	X		
5	X		
6	X		
7	X		
8	X		
70			X
80			X
90	X		
91			X

1B : Chassis

Any repair to the chassis must be accompanied by a written declaration by the entrant to the Renault Sport Technical scrutineers. It must also be mentioned in the vehicle's technical passport. Important repair will have to be exclusively carried out by the chassis manufacturer or by a company approved by Renault Sport.

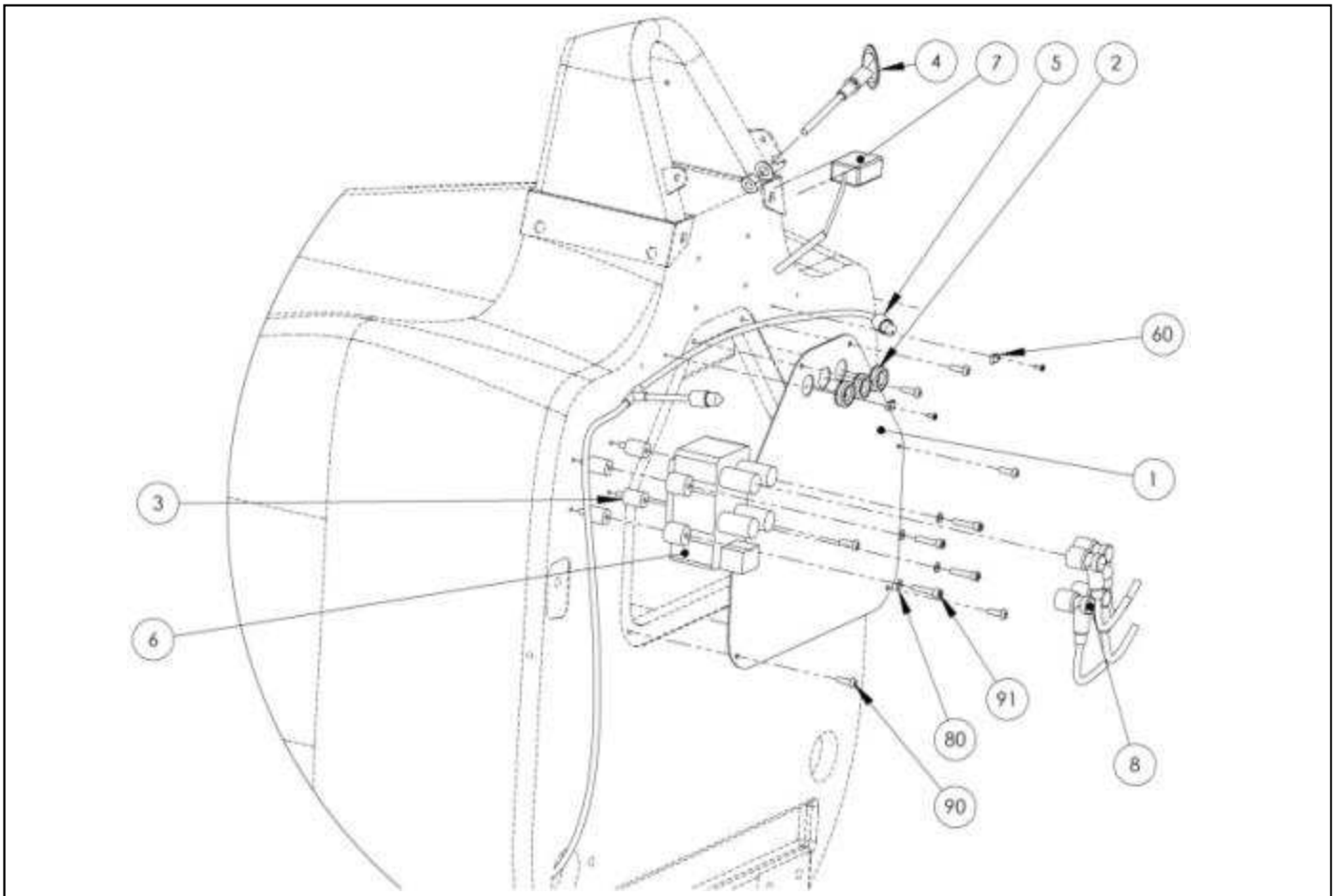
It is allowed to repair threads in case of metal tearing.

It is allowed to stick a thermal protection of adhesive metallic tape on the back face of the tub, in front of the engine.

2B : Roll hoop

It is allowed to paint the roll hoop.

April 2nd, 2014



	A	B	C
1	X		
2			X
3			X
4	X		
5	X		
6	X		
7		X	
8	X		
60			X
80			X
90			X
91			X

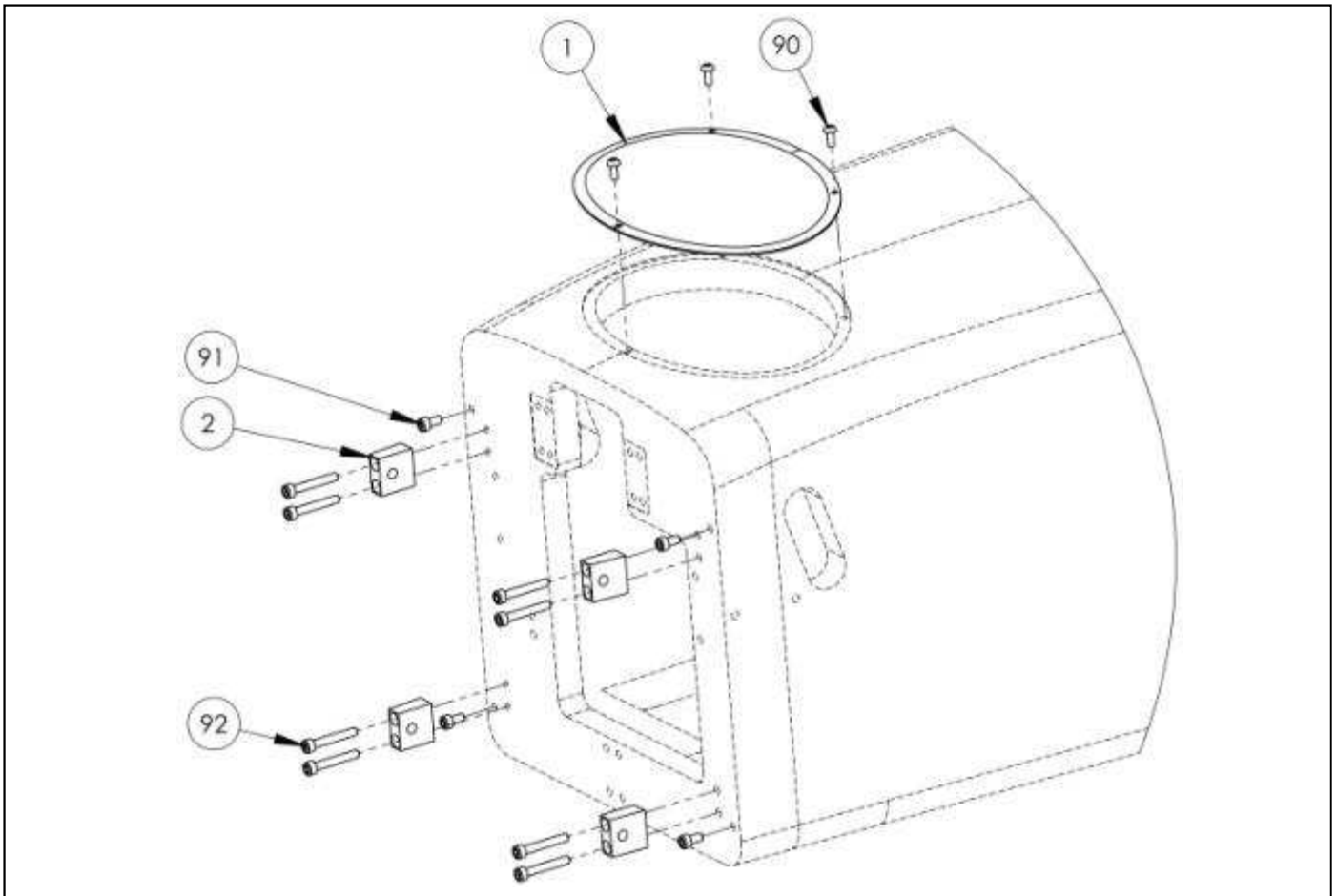
7B – 8B : Beacon receiver

It is allowed to install a beacon receiver. Only the constructor beacon receiver ref. **G04-05B007V1** is allowed.

The beacon bracket is free.

NOMENCLATURE
TECHNICAL REGULATIONS 2014

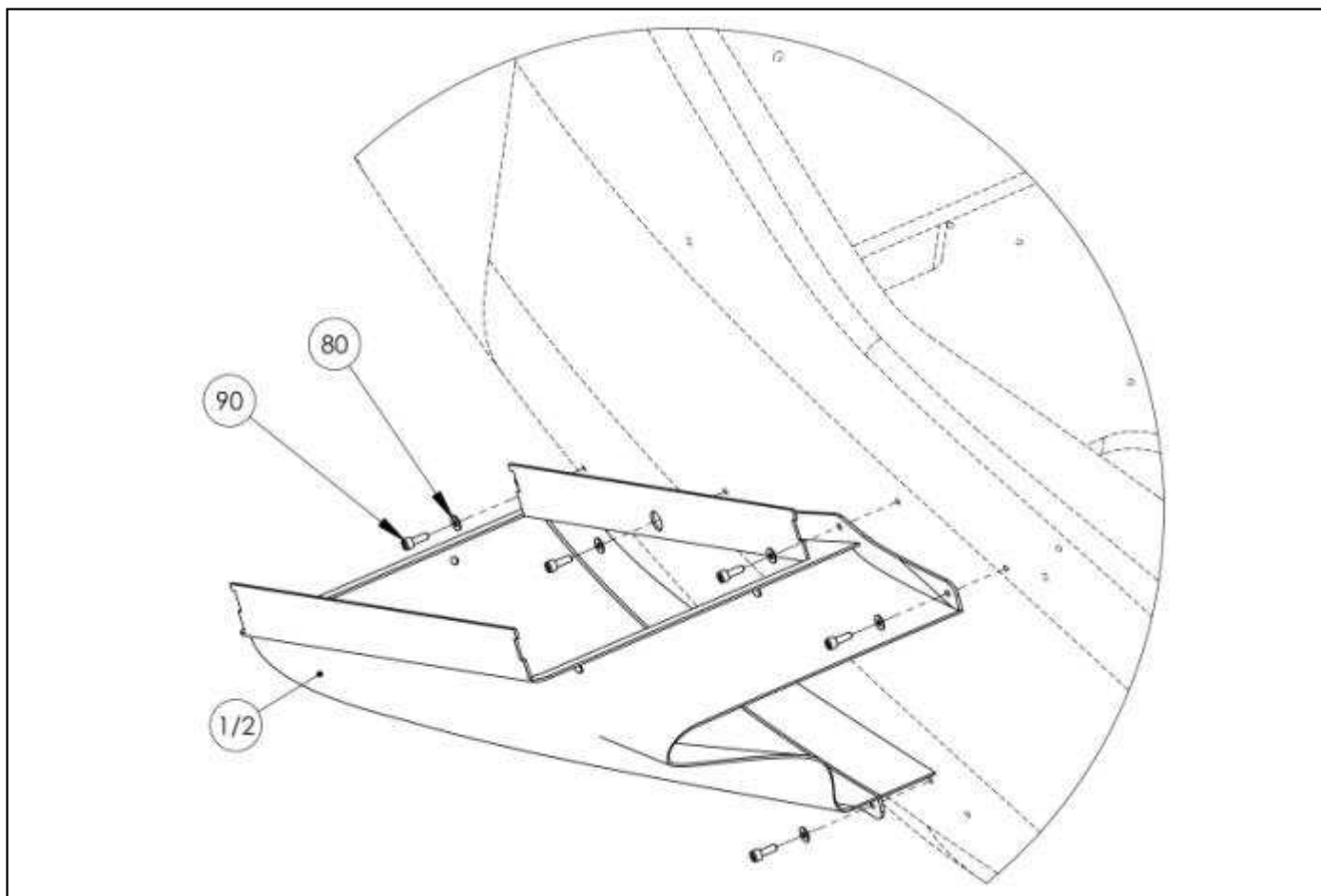
April 2nd, 2014



	A	B	C
1	X		
2		X	
90			X
91			X
92			X

2B : Crash box bracket

It is allowed to repair the various fitting points if some metal has been torn off.



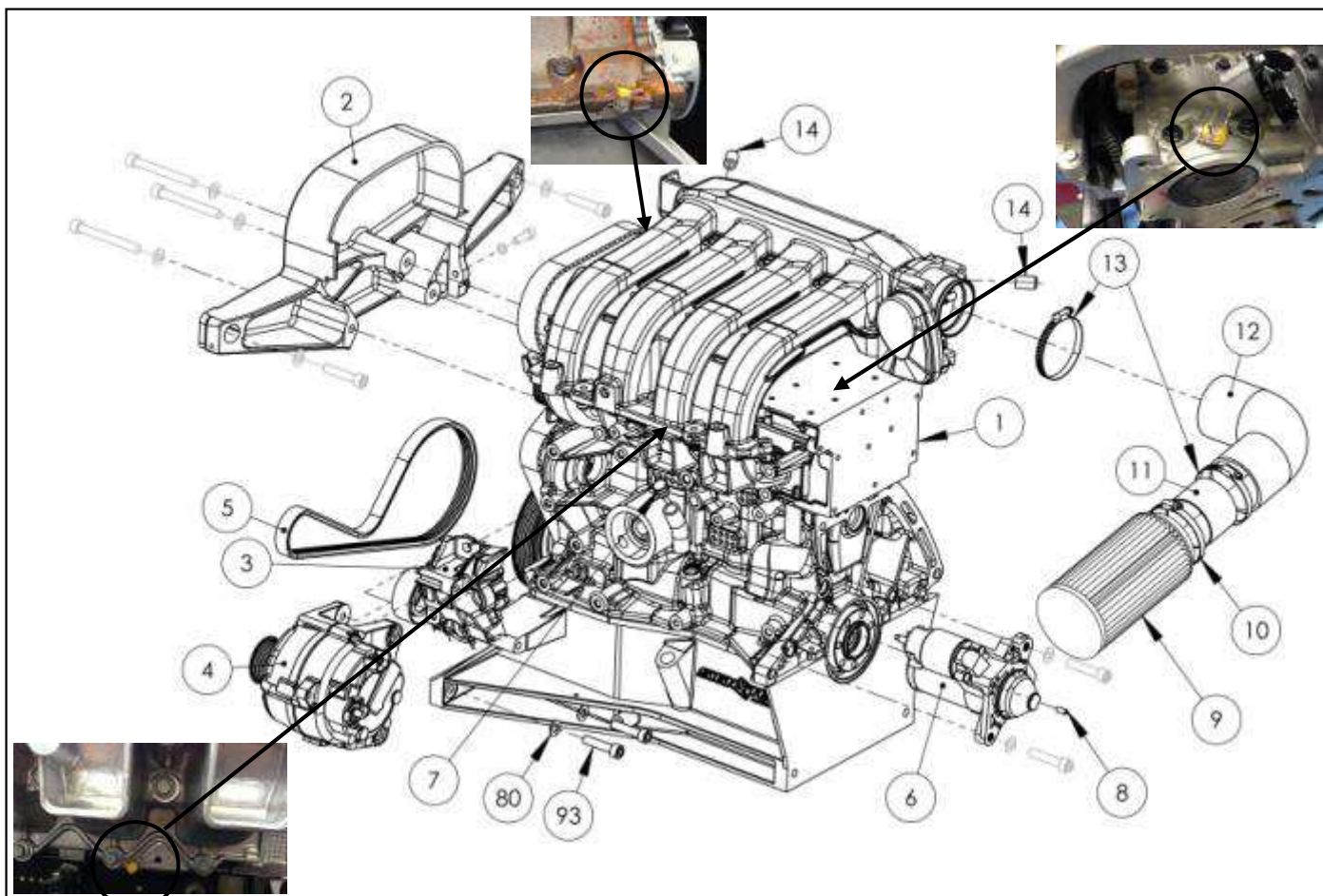
	A	B	C
1		X	
2		X	
80			X
90			X

1B - 2B : Radiator ducts

It is allowed to add gaskets or adhesive tape between the ducts and the chassis to improve sealing.

NOMENCLATURE
TECHNICAL REGULATIONS 2014

April 2nd, 2014



	A	B	C
1		X	
2	X		
3	X		
4	X		
5	X		
6	X		
7	X		
8	X		

	A	B	C
9	X		
10			X
11	X		
12	X		
13			X
14	X		
80			X
93			X

1B : Engine The engine bears three (3) seals :

Three (3) mechanical seals placed:

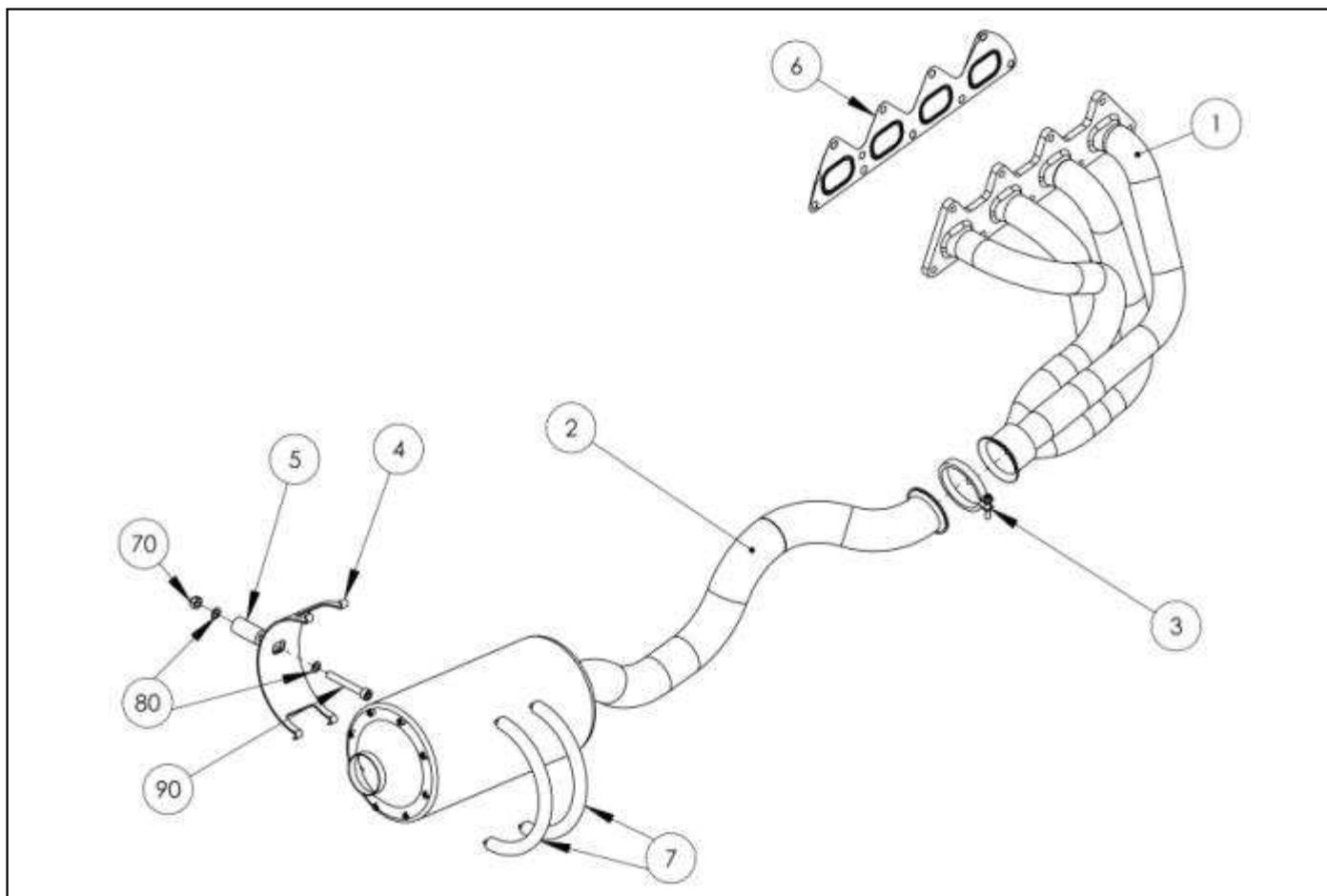
- on the engine sump
- On the cylinder head cover the injectors bracket
- on the cylinder head cover

Seals must remain in place. **It is forbidden to carry out any work on the engine**

WARNING : competitors are responsible for the condition of seals.

It is **compulsory** to use the following **engine lubricant**: **Elf HTX 825 10W60**

No additive is allowed.



	A	B	C
1		X	
2		X	
3		X	
4		X	
5	X		
6	X		
7			X
70			X
80			X
90			X

1B - 2B - 4B : Exhaust elements

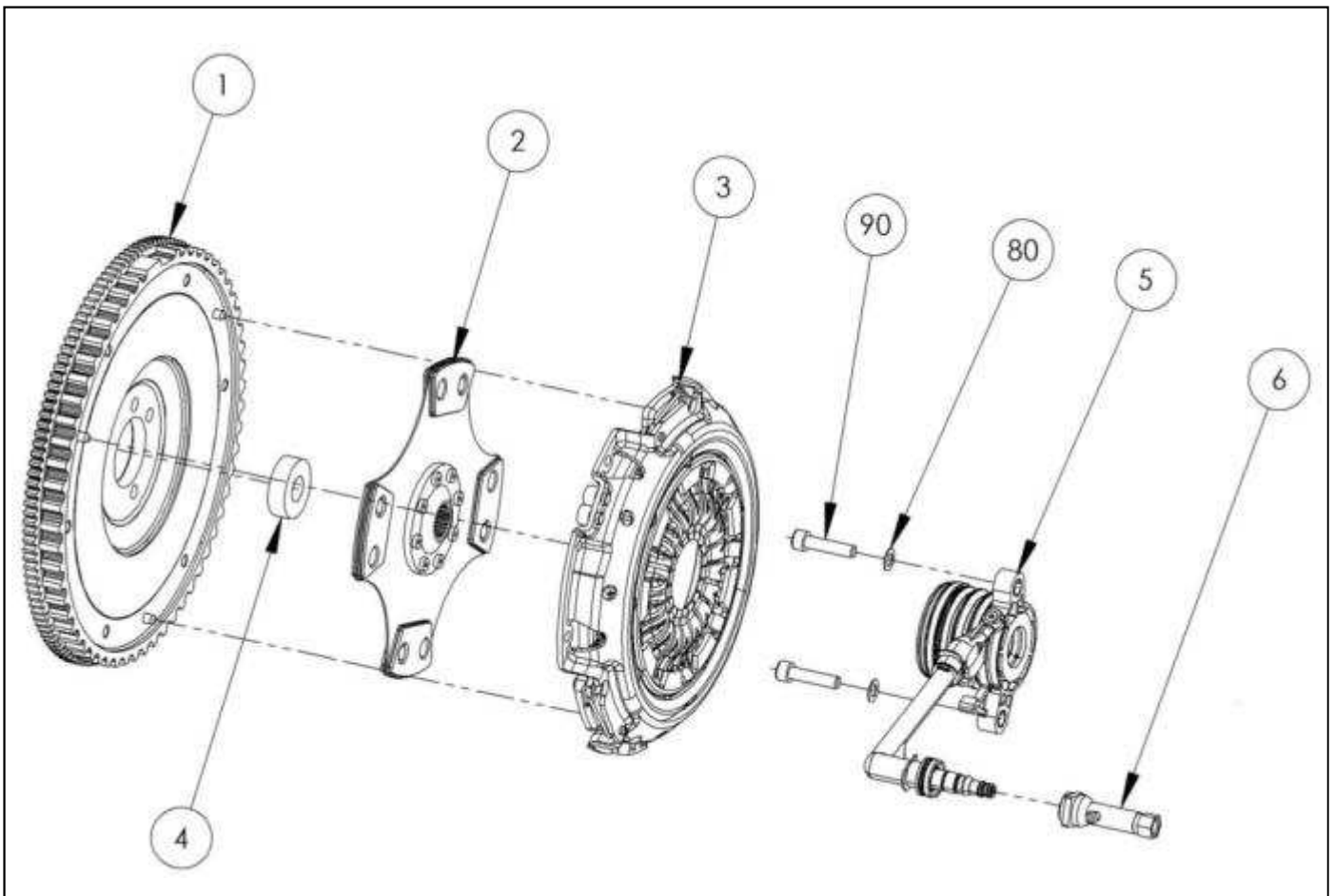
It is allowed to repair the exhaust elements respecting the original dimensions and functions. Adding reinforcement is forbidden

3B : Exhaust clamp

The length of the screw of the clamp is free.

NOMENCLATURE
TECHNICAL REGULATIONS 2014

April 2nd, 2014



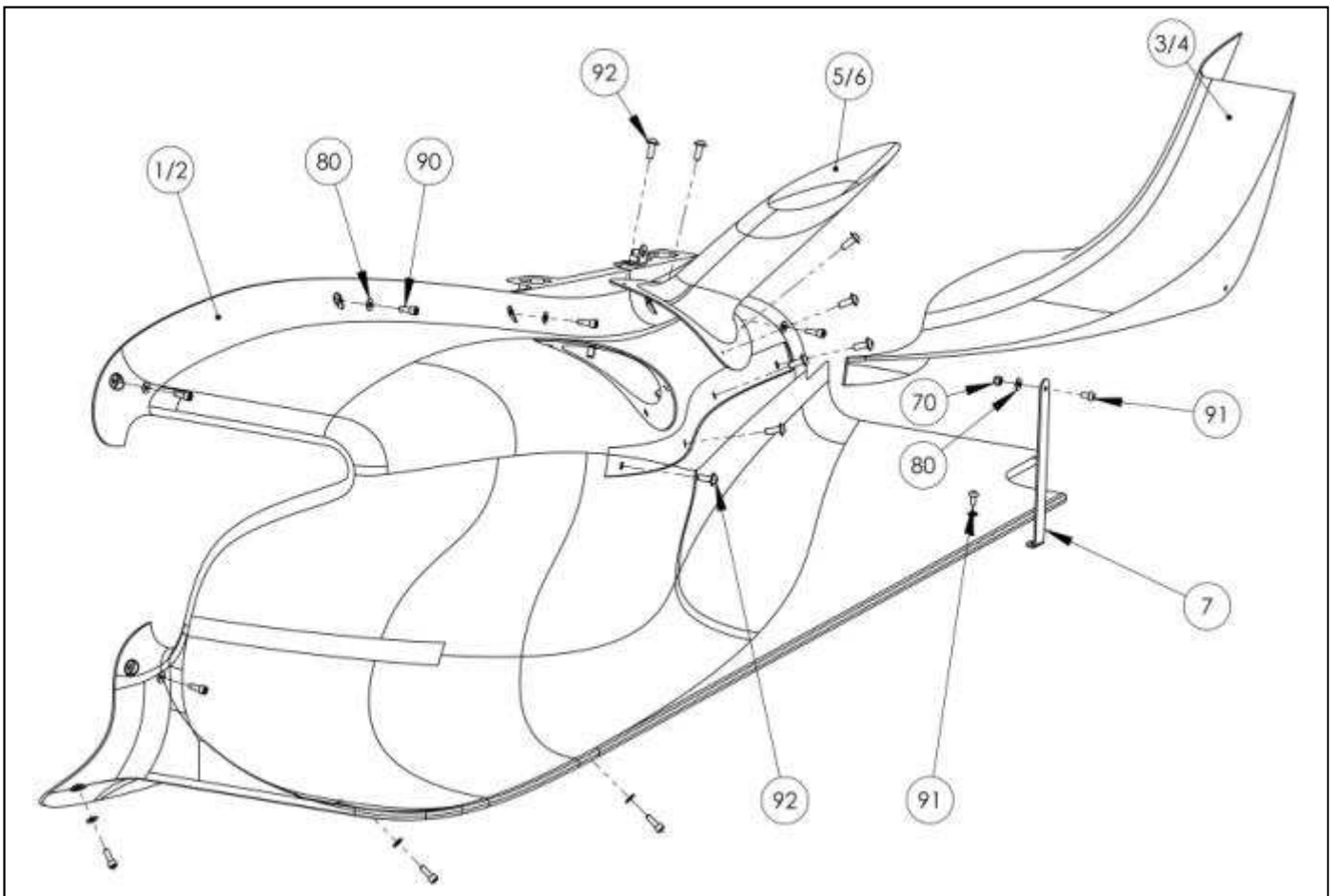
	A	B	C
1		X	
2	X		
3	X		
4	X		
5	X		
6	X		
80			X
90			X

1B : Engine flywheel

Minimum weight : 6810 g without fixation screws and taking into account the clutch surface wear.

NOMENCLATURE
TECHNICAL REGULATIONS 2014

April 2nd, 2014



	A	B	C
1		X	
2		X	
3		X	
4		X	
5		X	
6		X	
7	X		
70			X
80			X
90			X
91			X
92			X

1B - 2B : Sidepods

it is allowed to add a protective and sealing gasket between the sidepods and the chassis.

1B - 2B - 3B - 4B - 5B - 6B : Bodywork

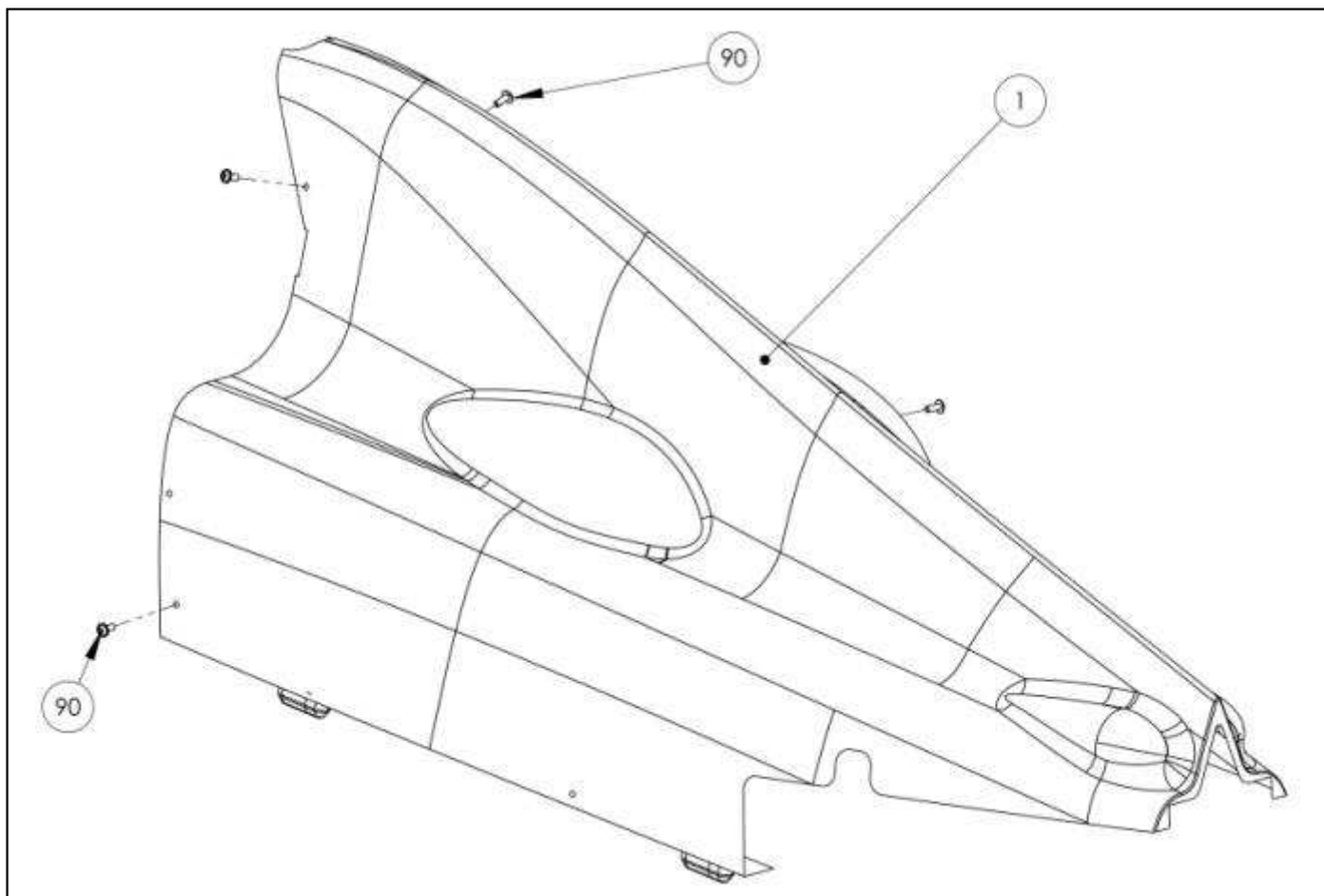
It is allowed to repair with no change in weight and dimension.

5B - 6B : Chimneys

It is forbidden to blank the exit of the chimneys.

NOMENCLATURE
TECHNICAL REGULATIONS 2014

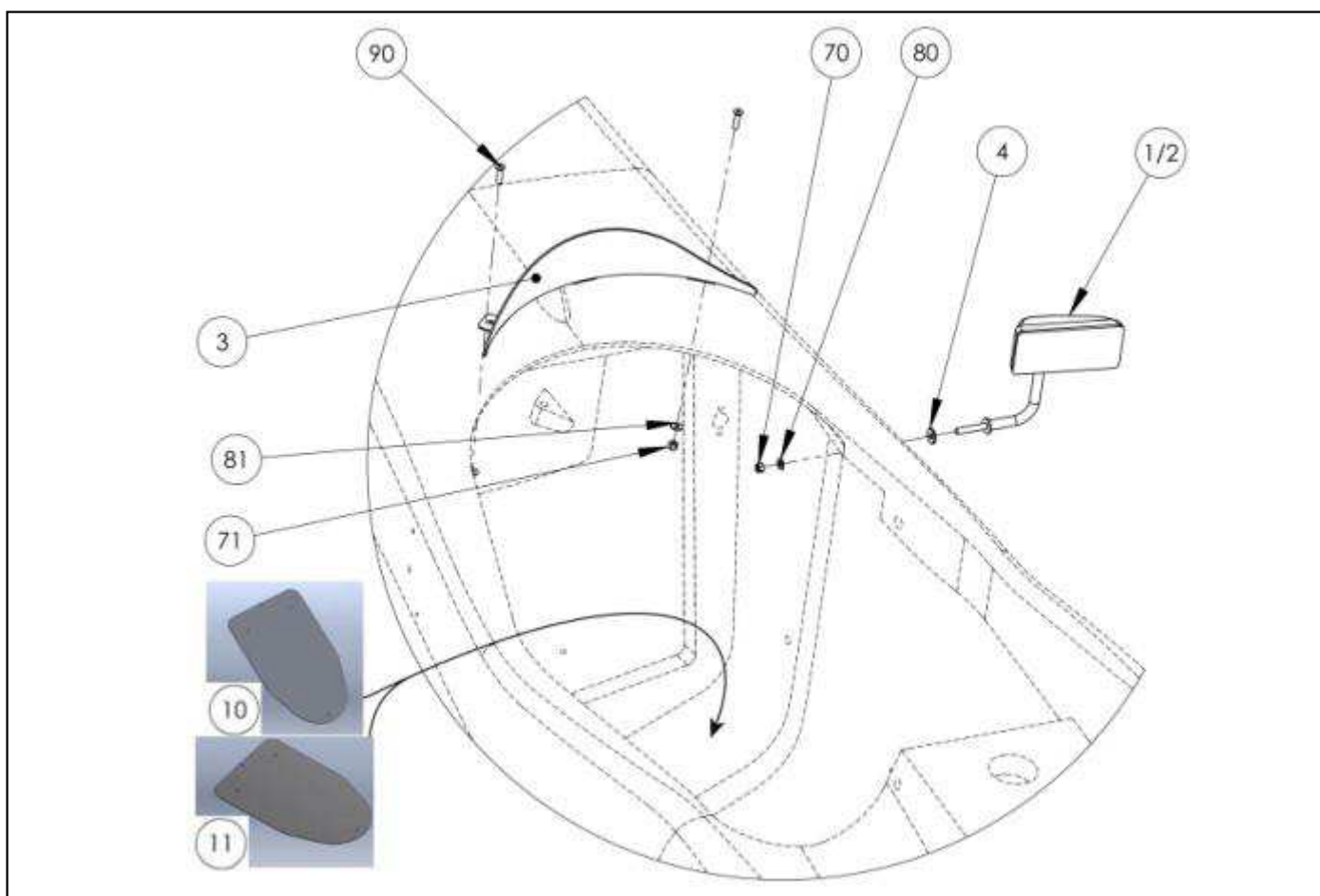
April 2nd, 2014



	A	B	C
1		X	
90	X		

1B : Engine cover

It is allowed to repair without change of weight or dimension.



	A	B	C
1		X	
2		X	
3	X		
10		X	
11		X	
70			X
71			X
80			X
81			X
90			X

1B - 2B : Rear view mirrors

It is allowed :
 - to paint the rear view mirrors
 - to add rubber washers between mirror supports and chassis.

10B : Ballast

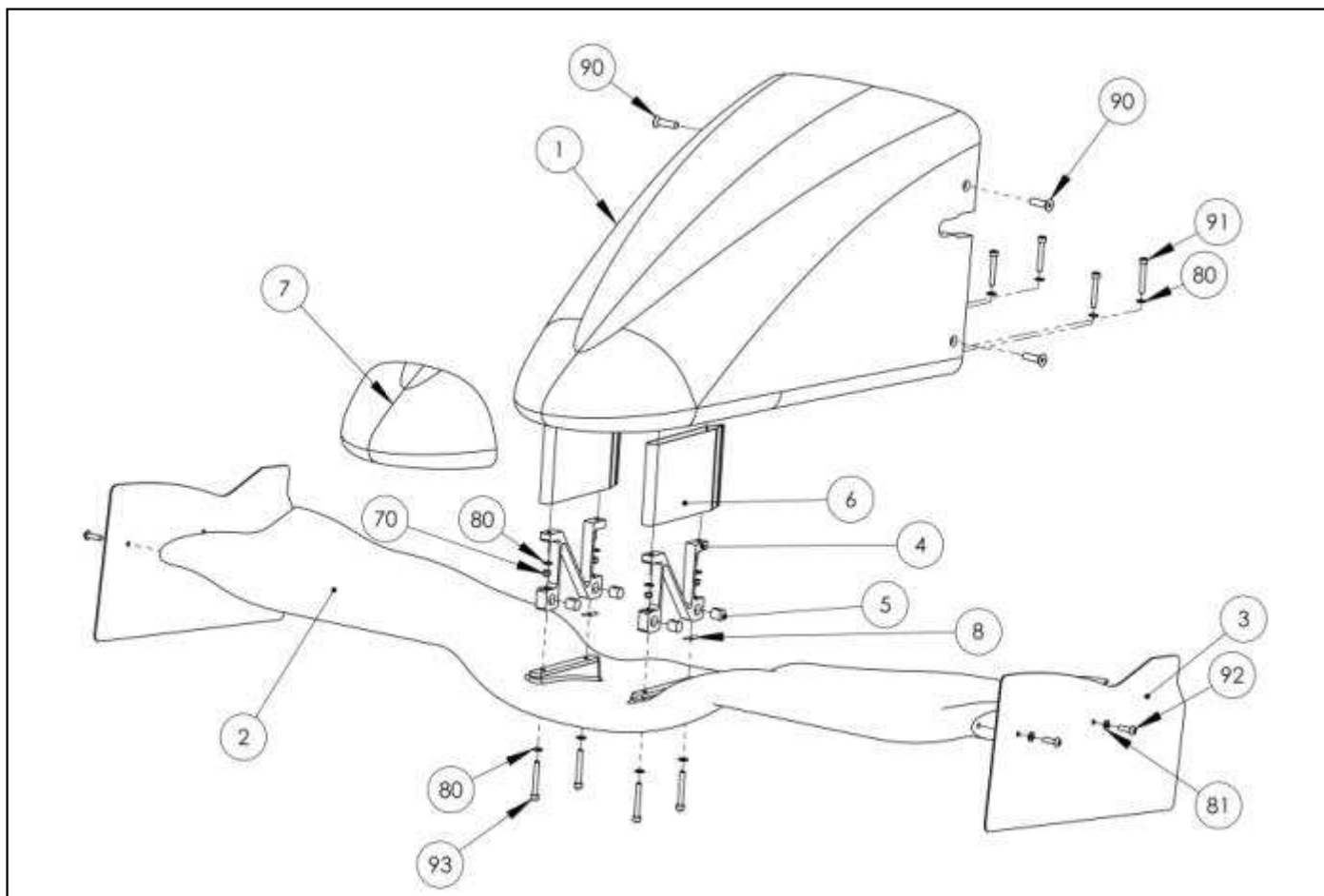
Only ballast ref. **G04-20A023V1** is allowed.
 It is allowed to add tape all around ballast plates.
 The ballast screws are free.
 To respect the article 4.3 of the 2014 FORMULA RENAULT 1.6 Technical regulations, the screws should permit to add a seal if the Renault Sport technical scrutineers judge it necessary.

11B : Ballast support

It is allowed to remove the ballast support in case of no use of ballast.

NOMENCLATURE
TECHNICAL REGULATIONS 2014

April 2nd, 2014



	A	B	C
1		X	
2		X	
3		X	
4	X		
5	X		
6		X	
7		X	
8		X	
70			X
80			X
81			X
90			X
91			X
92			X
93			X

1B : Crashbox tip

It is forbidden to repair the crashbox tip. It can be replaced following the procedure that can be found in the 2014 User Manual.

2B : Front wing

It is permitted to block up the fitting holes.

2B - 3B - 6B : Front wing elements

It is allowed to repair without any change in weight or dimension..

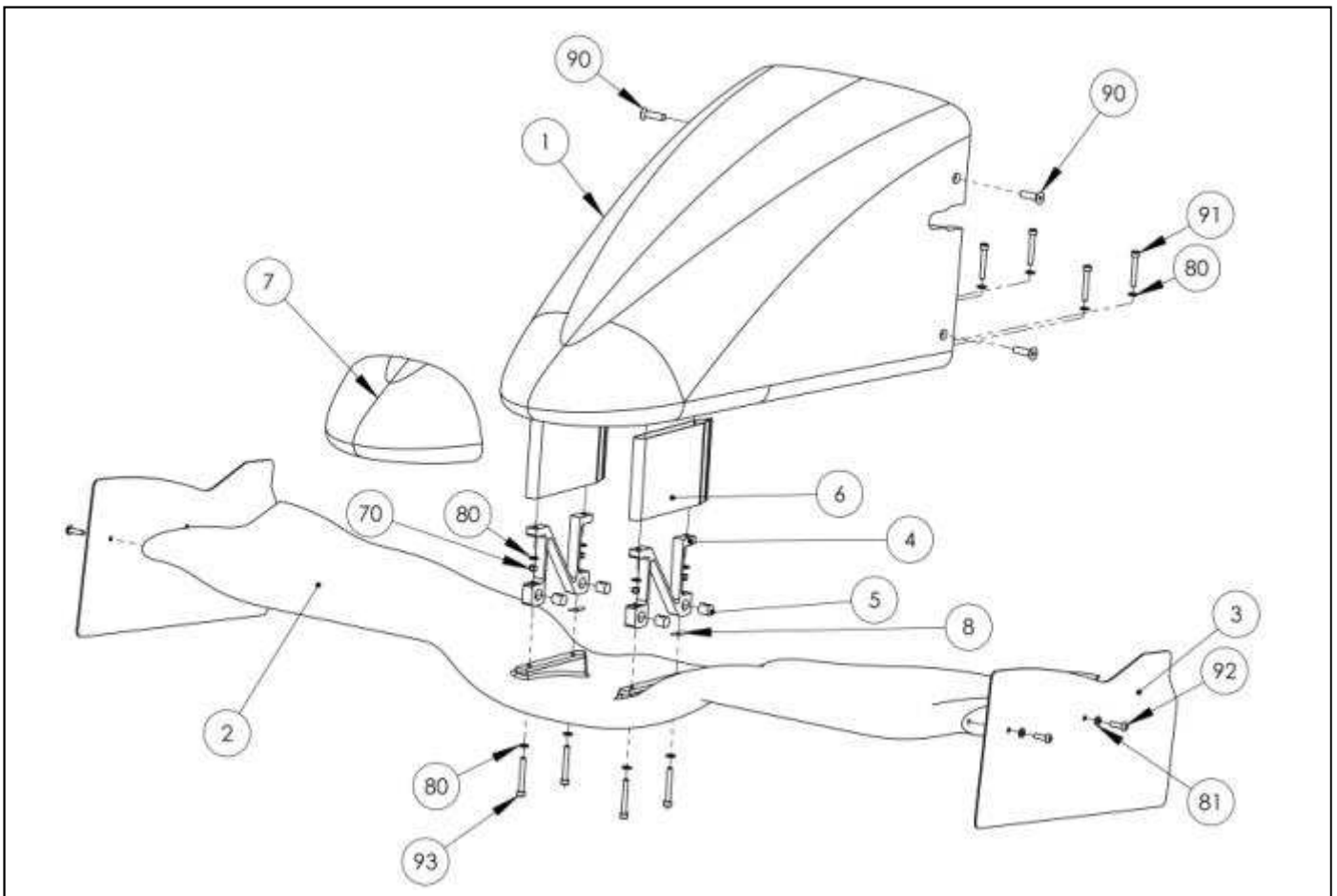
It is permitted to apply adhesive tape on the leading and trailing edges. In all cases, its only function shall be to protect the item to which it has been applied. Under no circumstances shall it be used to connect several items.

4B : Front wing bracket

Only one way mounting is allowed (see 2014 User Manual).

NOMENCLATURE
TECHNICAL REGULATIONS 2014

April 2nd, 2014



	A	B	C
1		X	
2		X	
3		X	
4	X		
5	X		
6		X	
7		X	
8		X	
70			X
80			X
81			X
90			X
91			X
92			X
93			X

7B : Nose or crashbox

Any repair to the crashbox must be accompanied by a written declaration by the entrant to the Renault Sport Technical scrutineers. It must also be mentioned in the vehicle's technical passport. Important repair will have to be exclusively carried out by the chassis manufacturer. It is allowed to repair threads in case of metal tearing.

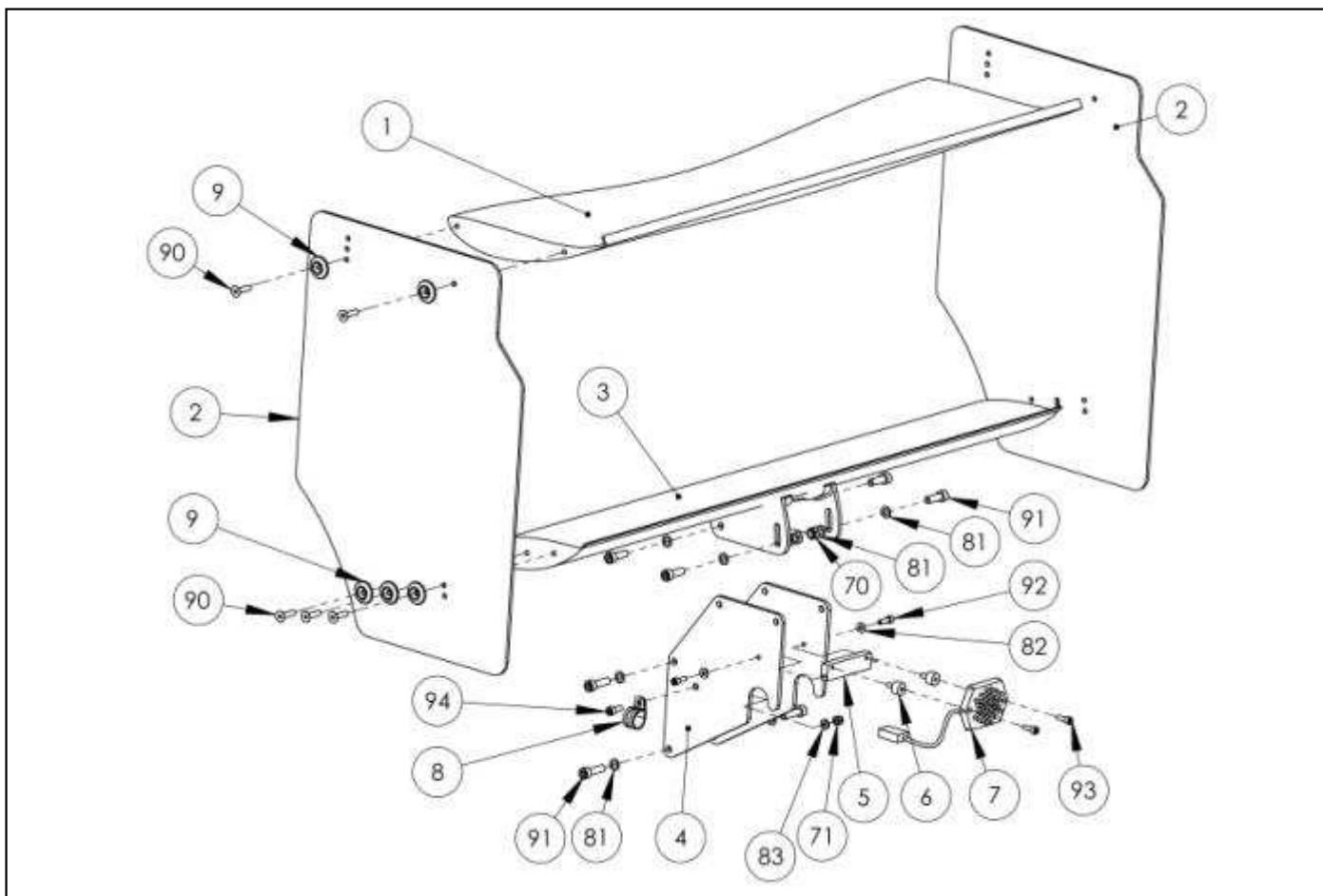
8B : Spacer

Three types of shim are allowed:
 - 0.5 mm thick
 - 1 mm thick
 - 2 mm thick

It is allowed to mount several washers.
 A wing angle set up without spacer is allowed.

NOMENCLATURE
TECHNICAL REGULATIONS 2014

April 2nd, 2014



	A	B	C
1		X	
2		X	
3		X	
4	X		
5	X		
6			X
7		X	
8			X
9	X		
70			X
71			X
80			X
81			X

	A	B	C
82			X
83			X
90			X
91			X
92			X
93			X
94			X

1B - 2B - 3B : Rear wing elements

It is allowed to repair without any change in weight or dimension..

It is permitted to apply adhesive tape on the leading and trailing edges. In all cases, its only function shall be to protect the item to which it has been applied. Under no circumstances shall it be used to connect several items.

2B : Endplates

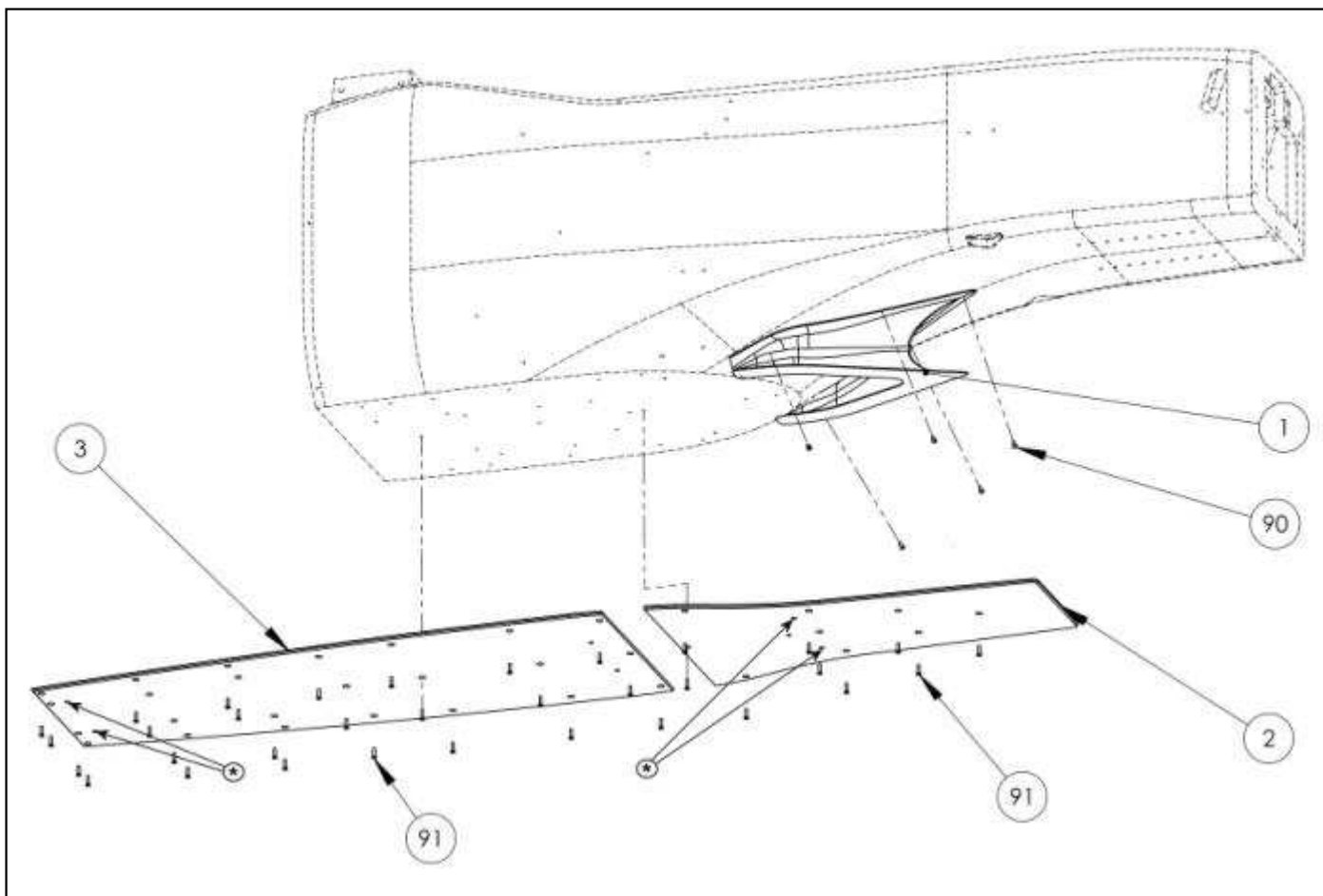
Their position is ruled. The values and the measurement procedure are detailed in the 2014 User Manual.

7B : Rain light

The rain light can be used with a maximum of five (5) leds not functioning.

NOMENCLATURE
TECHNICAL REGULATIONS 2014

April 2nd, 2014



	A	B	C
1		X	
2		X	
3		X	
90			X
91			X

1B : Front bib

It is allowed to adjust the position of the front bib relative to the chassis.
It is allowed to repair without any change of weight or dimension.

2B : Front wood

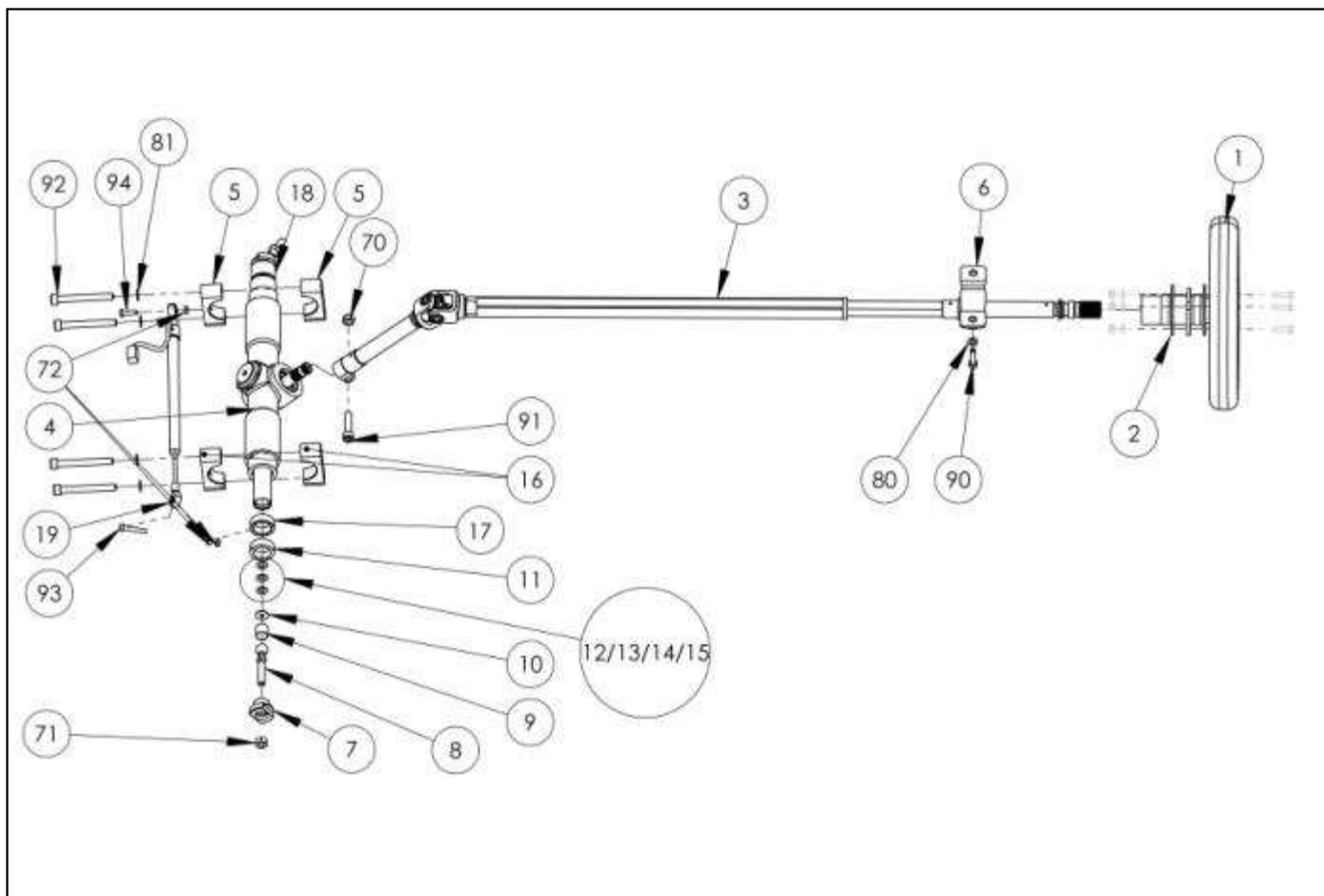
It is permitted to apply adhesive tape on the leading edges. In all cases, its only function shall be to protect the item to which it has been applied. Under no circumstances shall it be used to connect several items.
It can be painted

3B : Middle woods

They can be painted.
Their minimum thickness is **4 mm**.
The thickness measurement will be made around the 4 holes located close to the longitudinal axle of the woods (marked with a *).
It is allowed to make counter sink on the on the wooden plank.

NOMENCLATURE
TECHNICAL REGULATIONS 2014

April 2nd, 2014



	A	B	C
1		X	
2	X		
3		X	
4	X		
5	X		
6	X		
7	X		
8	X		
9	X		
10			X
11	X		
12		X	
13		X	
14		X	
15		X	

	A	B	C
16	X		
17	X		
18	X		
19		X	
30	X		
70			X
71			X
72			X
80			X
81			X
90			X
91			X
92			X
93			X
94			X

1B : Steering wheel

For the driver's comfort, it is allowed to add some tape on the outer rim of the wheel to allow a better grip.

3B : Steering column

The steering column position is ruled following the method described in the 2014 User Manual .

It is allowed to trim the universal joint following the method described in the 2014 User Manual.

12B – 13B - 14B – 15B : « Belleville » washers

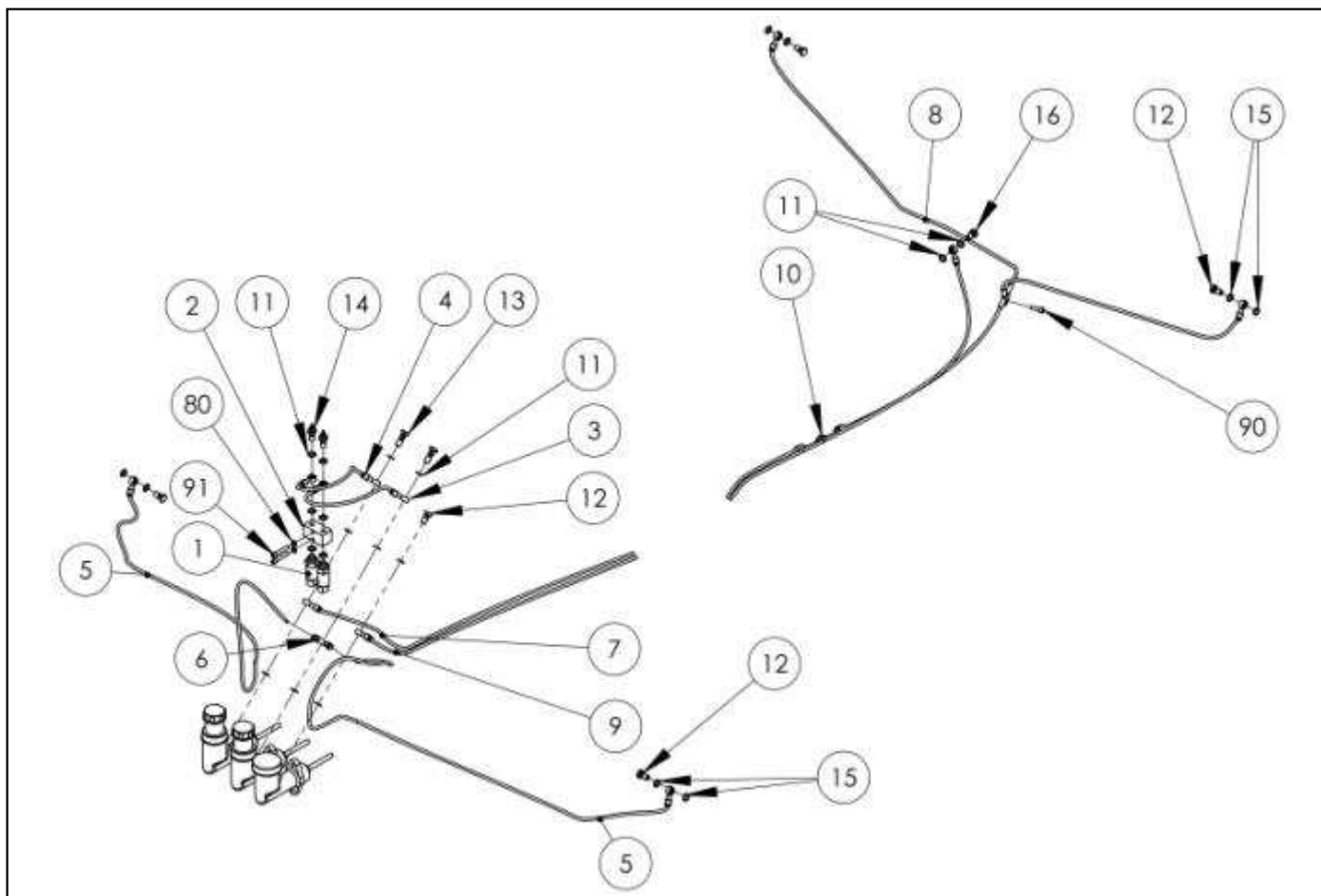
The stack and the number of « Belleville » washers are free.

19B : Steering sensor

It is allowed to install a steering sensor. Only the constructor steering sensor ref. G04-18A022V1 is allowed.

NOMENCLATURE
TECHNICAL REGULATIONS 2014

April 2nd, 2014



	A	B	C
1	X		
2	X		
3	X		
4	X		
5	X		
6			X
7		X	
8		X	
9		X	
10		X	
11			X
12			X

	A	B	C
13			X
14	X		
15			X
16			X
80			X
90			X
91			X

7B - 8B – 9B : Brake lines

It is allowed to add quick coupling device on the brake lines

8B : Right brake line

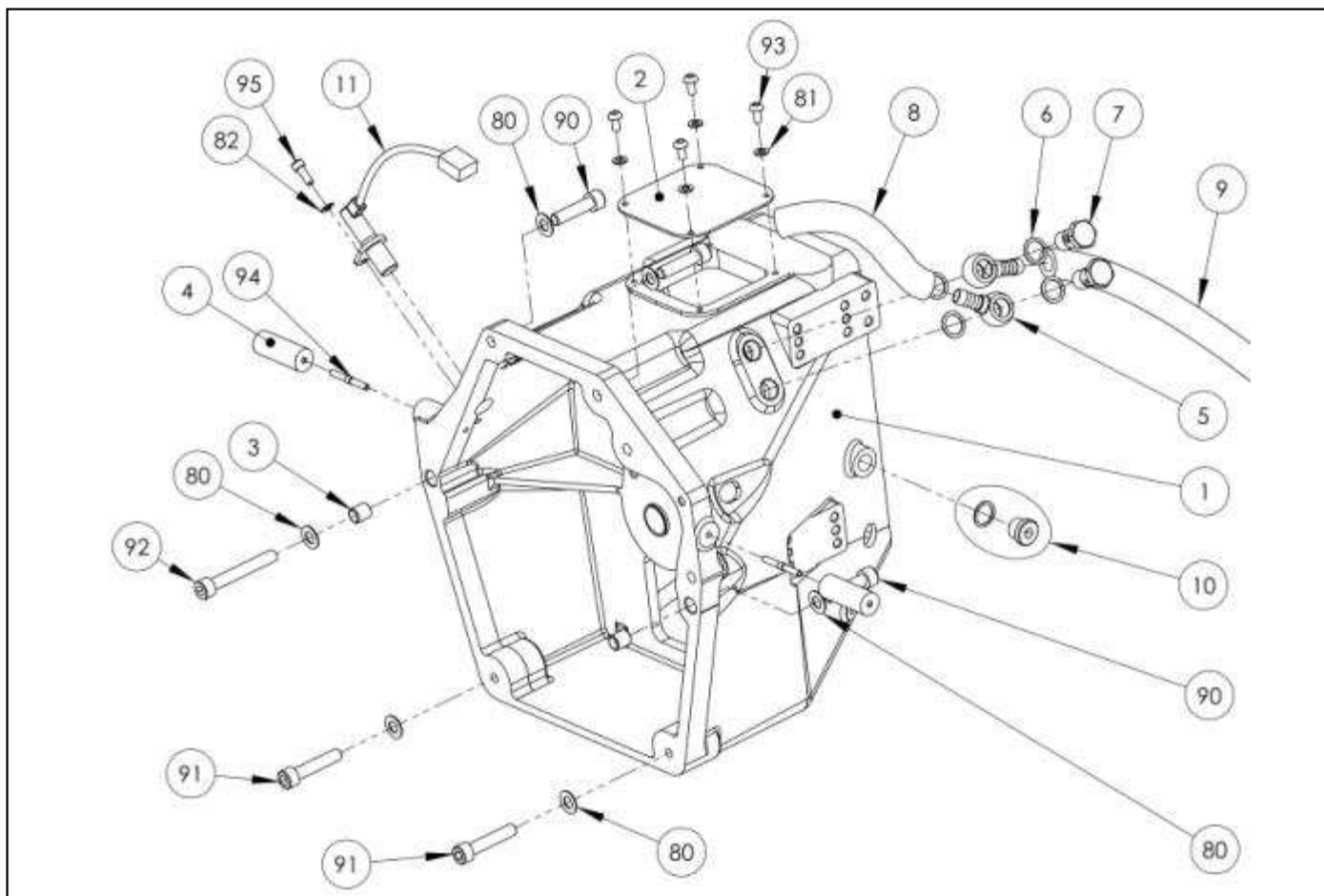
It is allowed to add a heat protection to protect the parts from the exhaust radiation.

10B : Connector

This connector maybe removed in the case of the implementation of a quick couplig device.

NOMENCLATURE
TECHNICAL REGULATIONS 2014

April 2nd, 2014



	A	B	C
1		X	
2	X		
3	X		
4	X		
5	X		
6			X
7	X		
8		X	
9		X	
10			X

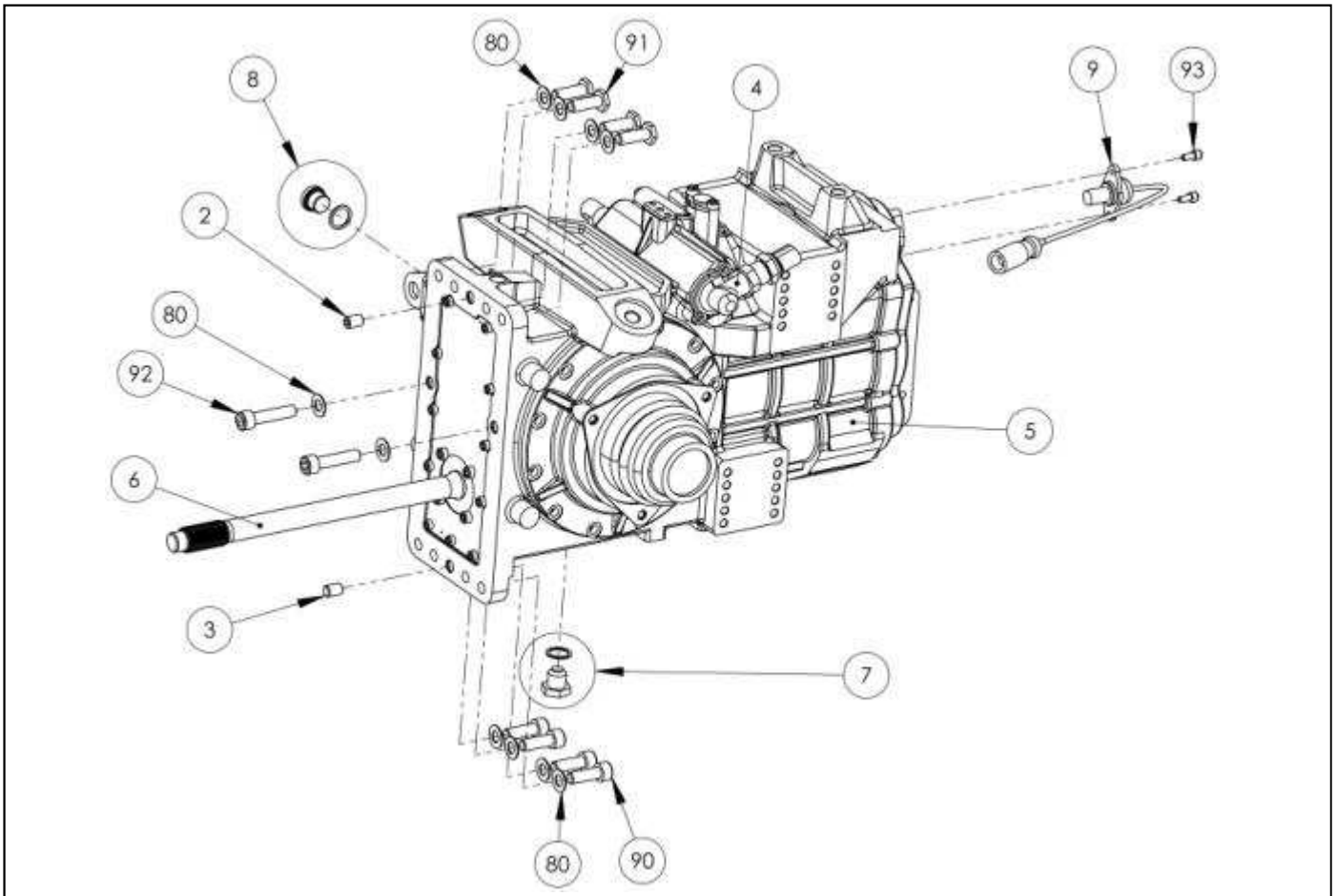
	A	B	C
11	X		
80			X
81			X
82			X
90			X
91			X
92			X
93			X
94			X
95			X

1B : Bell housing

It is allowed to repair the various fitting points if some metal has been torn off.

8B – 9B : Rubber hoses

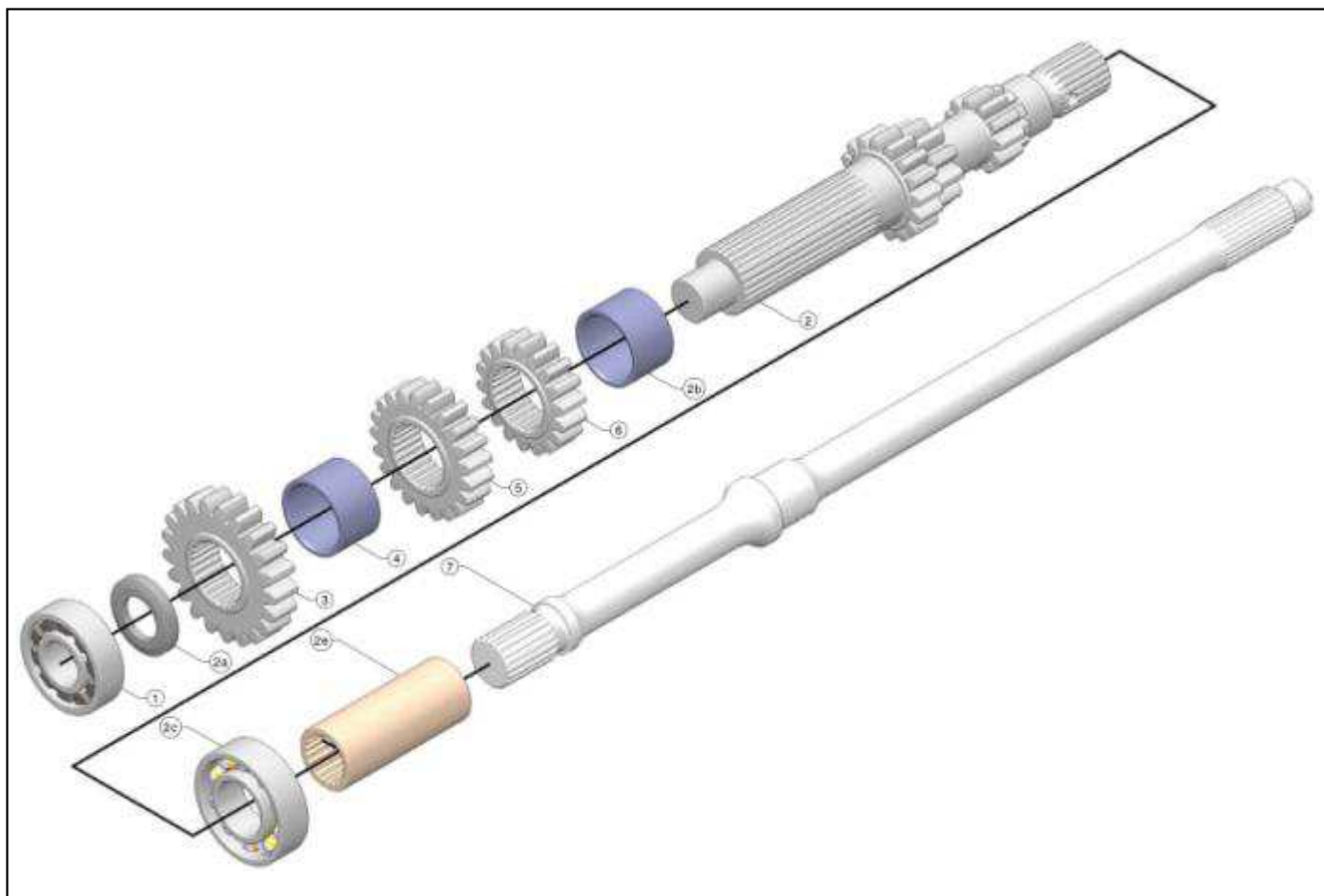
The rubber hoses are free but the internal diameter of the replacement hoses cannot be smaller than the diameter of the original ones.



	A	B	C
2	X		
3	X		
4	X		
5		X	
6	X		
7			X
8			X
9	X		
80			X
90			X
91			X
92			X
93			X

5B : Gearbox casing

It is allowed to repair the various fitting points if some metal has been torn off.

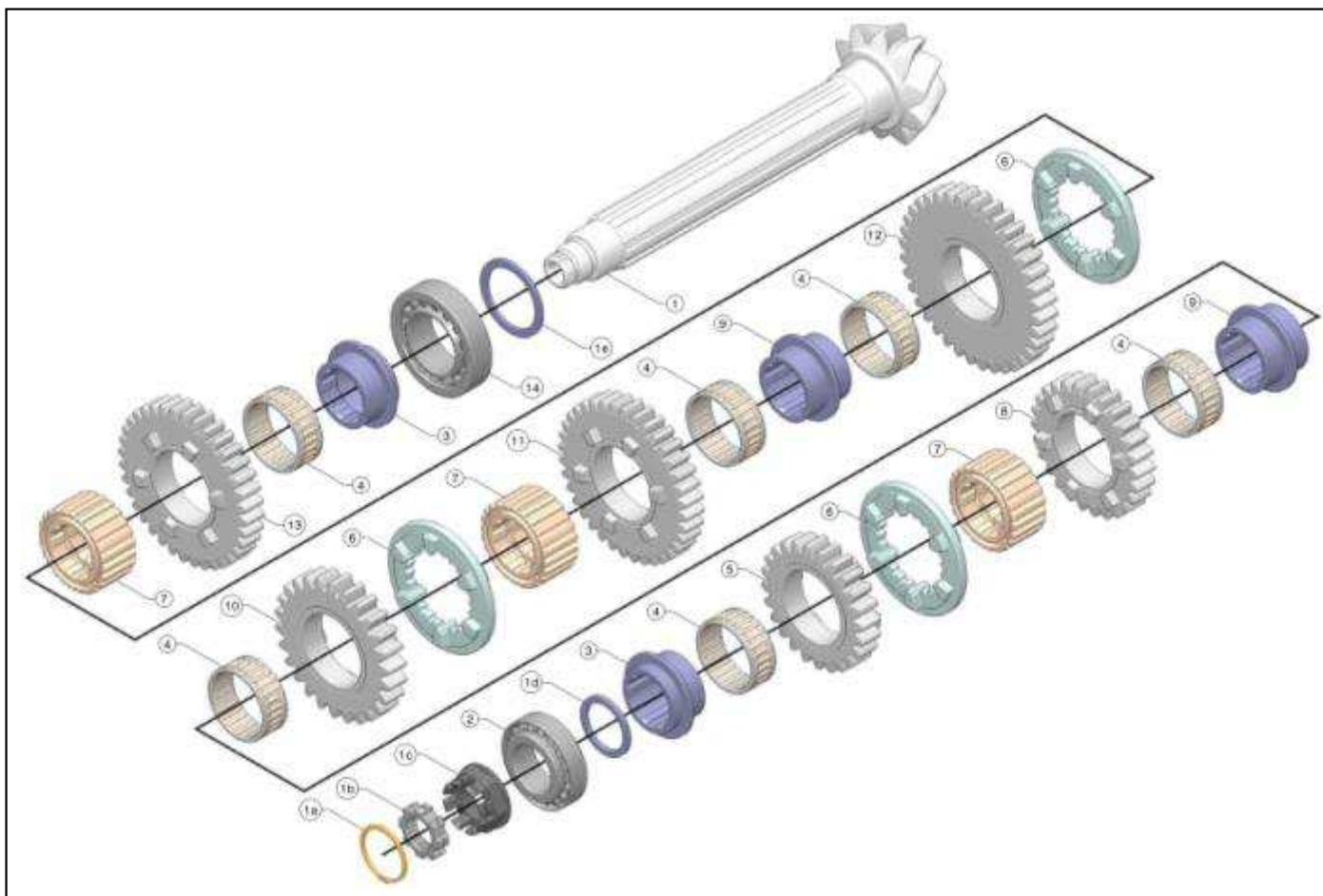


	A	B	C
1	X		
2	X		
2a		X	
2b	X		
2c	X		
2e	X		
3	X		
4	X		
5	X		
6	X		
7	X		

2a B : Shims

Several shim thicknesses (ref. F9002018-X,XX) are allowed: from 4.95 mm to 5.5 mm by steps of 0.05 mm.

It is Mandatory to respect the play following the method described in the 2014 User Manual.



	A	B	C
1	X		
1a	X		
1b	X		
1c	X		
1d		X	
1e		X	
2	X		
3	X		
4	X		
5	X		
6	X		
7	X		

	A	B	C
8	X		
9	X		
10	X		
11	X		
12	X		
13	X		
14	X		

1d B : Preload shims

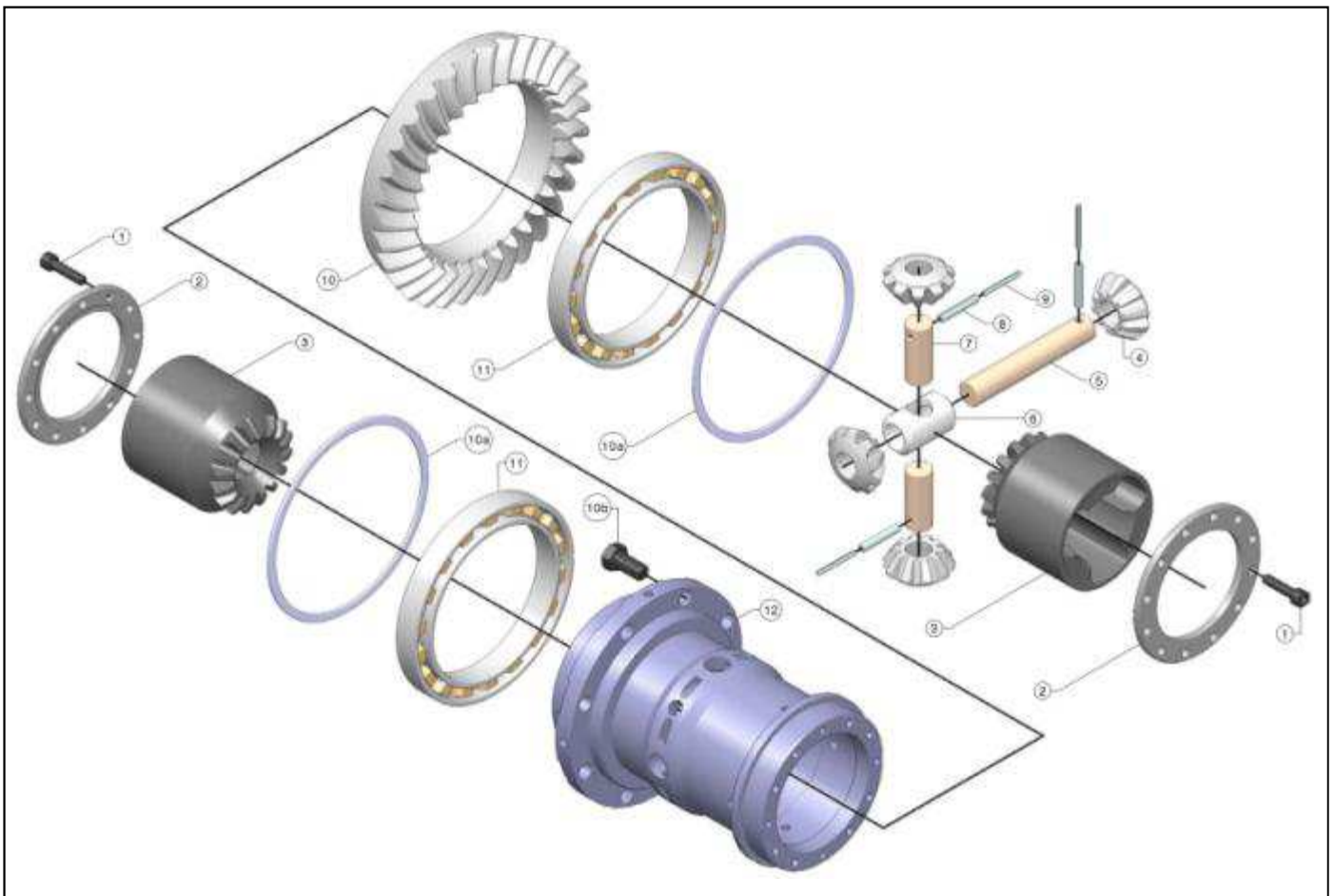
Several shim thicknesses (ref. F9002012-X,XX) are allowed: from 2.00 mm to 2.5 mm by steps of 0.05 mm. It is Mandatory to respect the preload following the method described in the 2014 User Manual.

1e B : Shims

Several shim thicknesses (ref. F9002011-X,XX) are allowed: from 0.95 mm to 1.75 by steps of 0.05 mm. It is Mandatory to respect the play following the method described in the 2014 User Manual.

NOMENCLATURE
TECHNICAL REGULATIONS 2014

April 2nd, 2014



	A	B	C
1	X		
2	X		
3	X		
4	X		
5	X		
6	X		
7	X		
8	X		
9	X		
10	X		
10a		X	
10b	X		
11	X		
12	X		

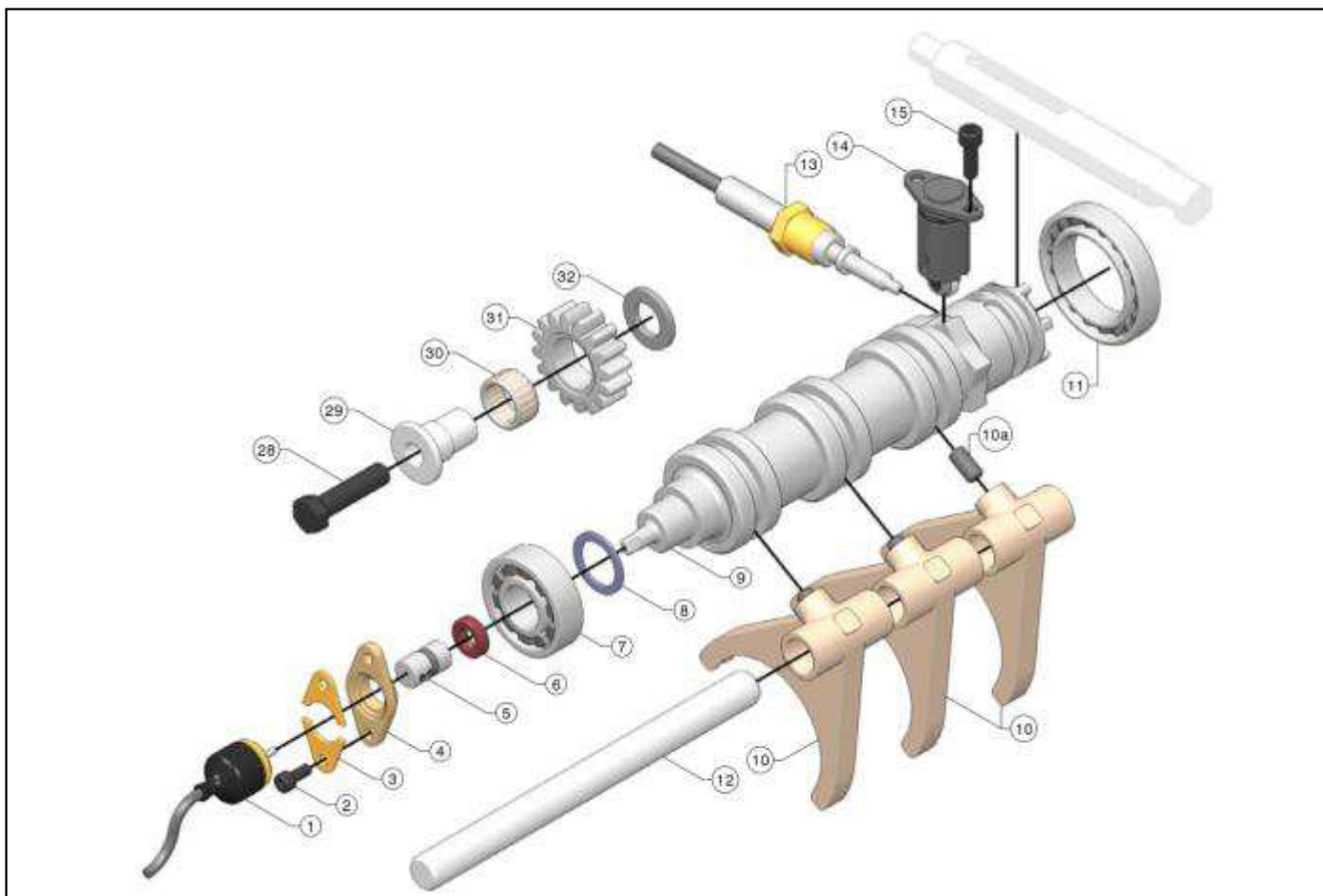
10a B : Tooth clearance shim

Several shim thicknesses (ref. F0085014-X,XX) are allowed: from 1.3 mm to 2.3 mm by steps of 0.05 mm.

It is Mandatory to respect the play following the method described in the 2014 User Manual.

NOMENCLATURE
TECHNICAL REGULATIONS 2014

April 2nd, 2014



	A	B	C
1	X		
2			X
3	X		
4	X		
5	X		
6	X		
7	X		
8		X	
9	X		
10	X		
10a	X		
11	X		

	A	B	C
12	X		
13	X		
14	X		
15	X		
28	X		
29	X		
30	X		
31	X		
32	X		

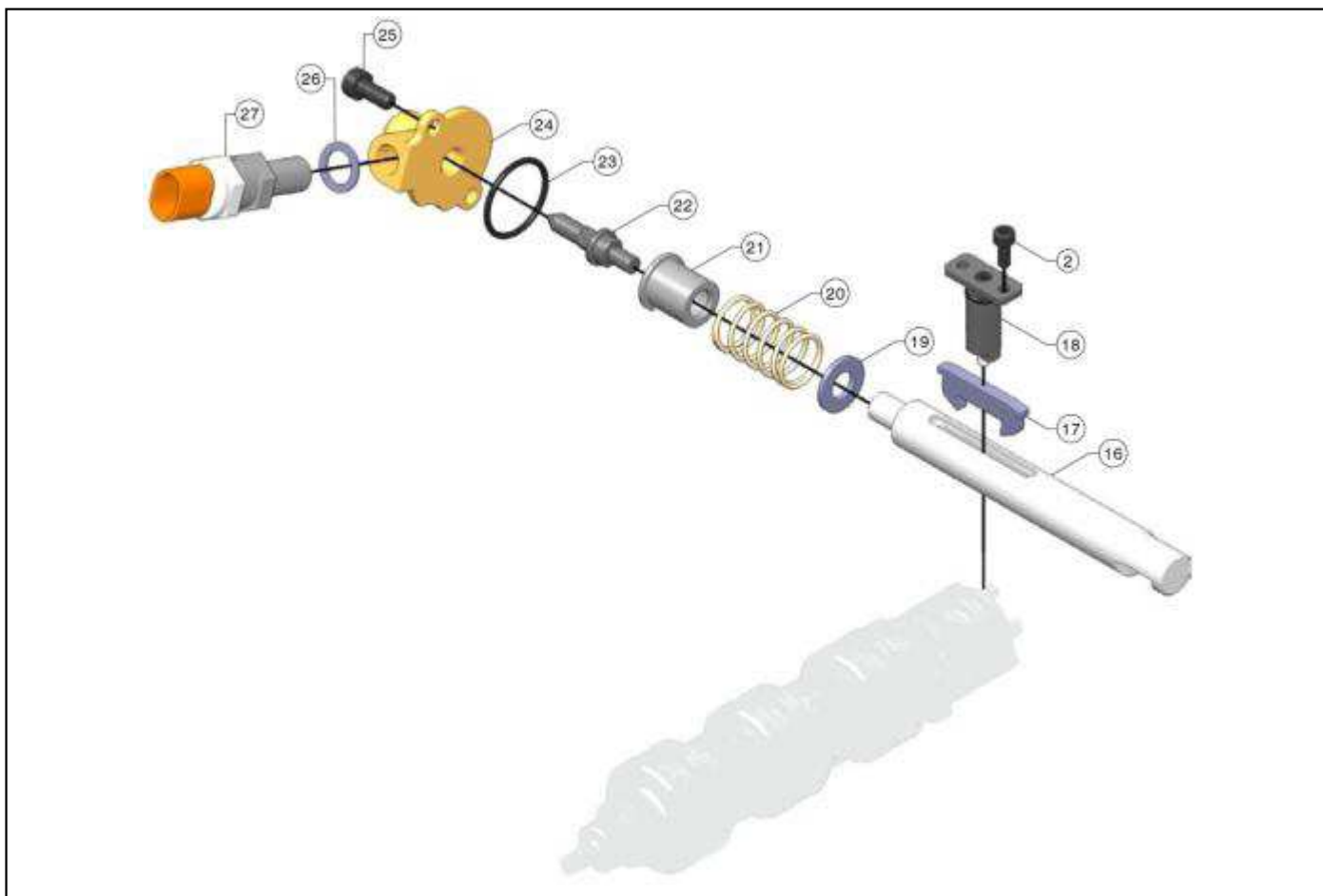
8 B : Shim

Several shim thicknesses (ref. F9002004-X,XX) are allowed: from 1.2 mm to 1.5 mm by steps of 0.05 mm.

It is Mandatory to respect the play following the method described in the 2014 User Manual.

**NOMENCLATURE
TECHNICAL REGULATIONS 2014**

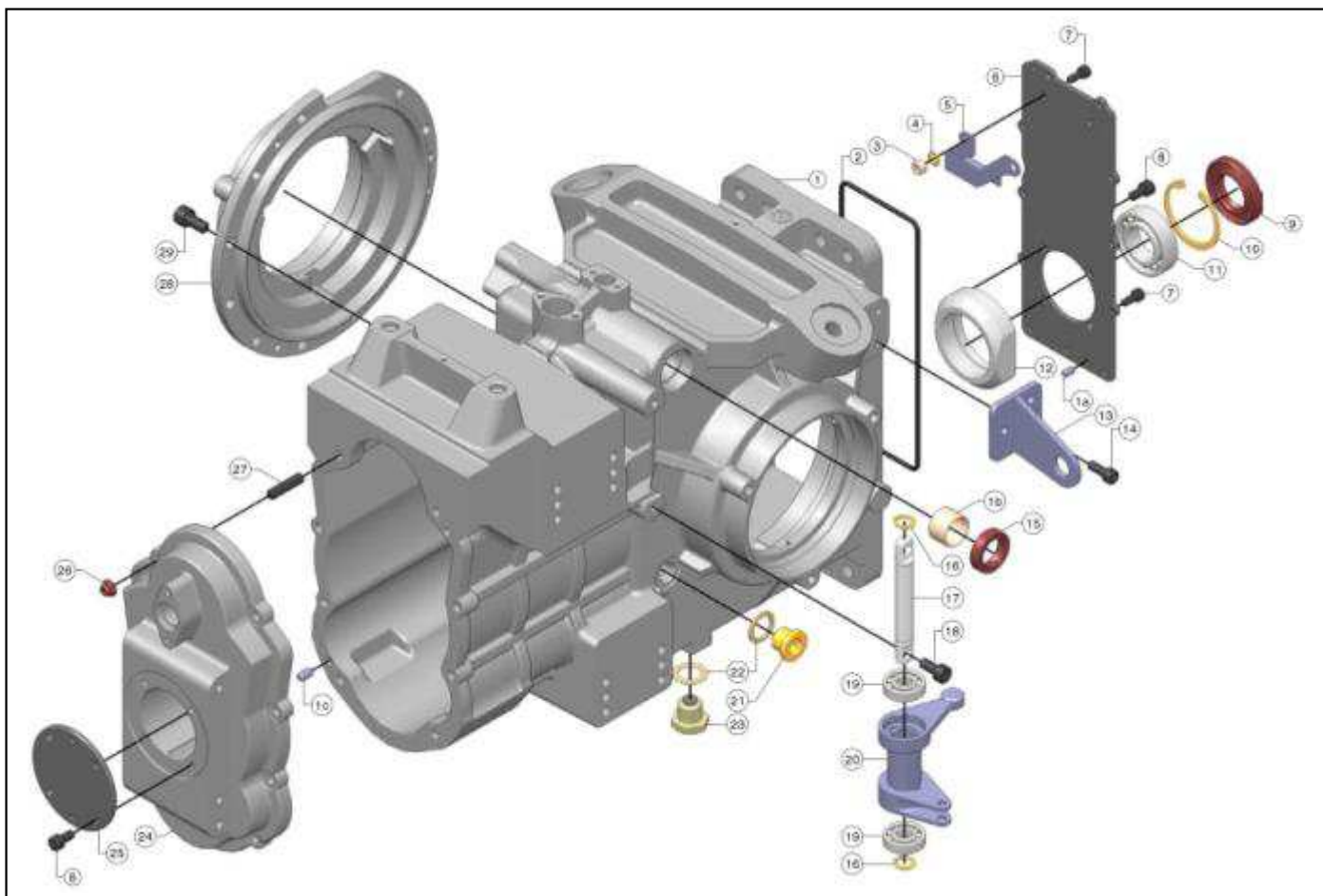
April 2nd, 2014



	A	B	C
2			X
16	X		
17	X		
18	X		
19	X		
20	X		
21	X		
22	X		
23	X		
24	X		
25			X
26	X		
27	X		

NOMENCLATURE
TECHNICAL REGULATIONS 2014

April 2nd, 2014



	A	B	C
1		X	
1a	X		
1b	X		
1c	X		
2	X		
3			X
4			X
5	X		
6	X		
7			X
8			X
9	X		
10	X		
11	X		
12	X		

	A	B	C
13	X		
14			X
15	X		
16	X		
17	X		
18	X		
19	X		
20	X		
21			X
22			X
23	X		
24		X	
25	X		
26			X
27			X

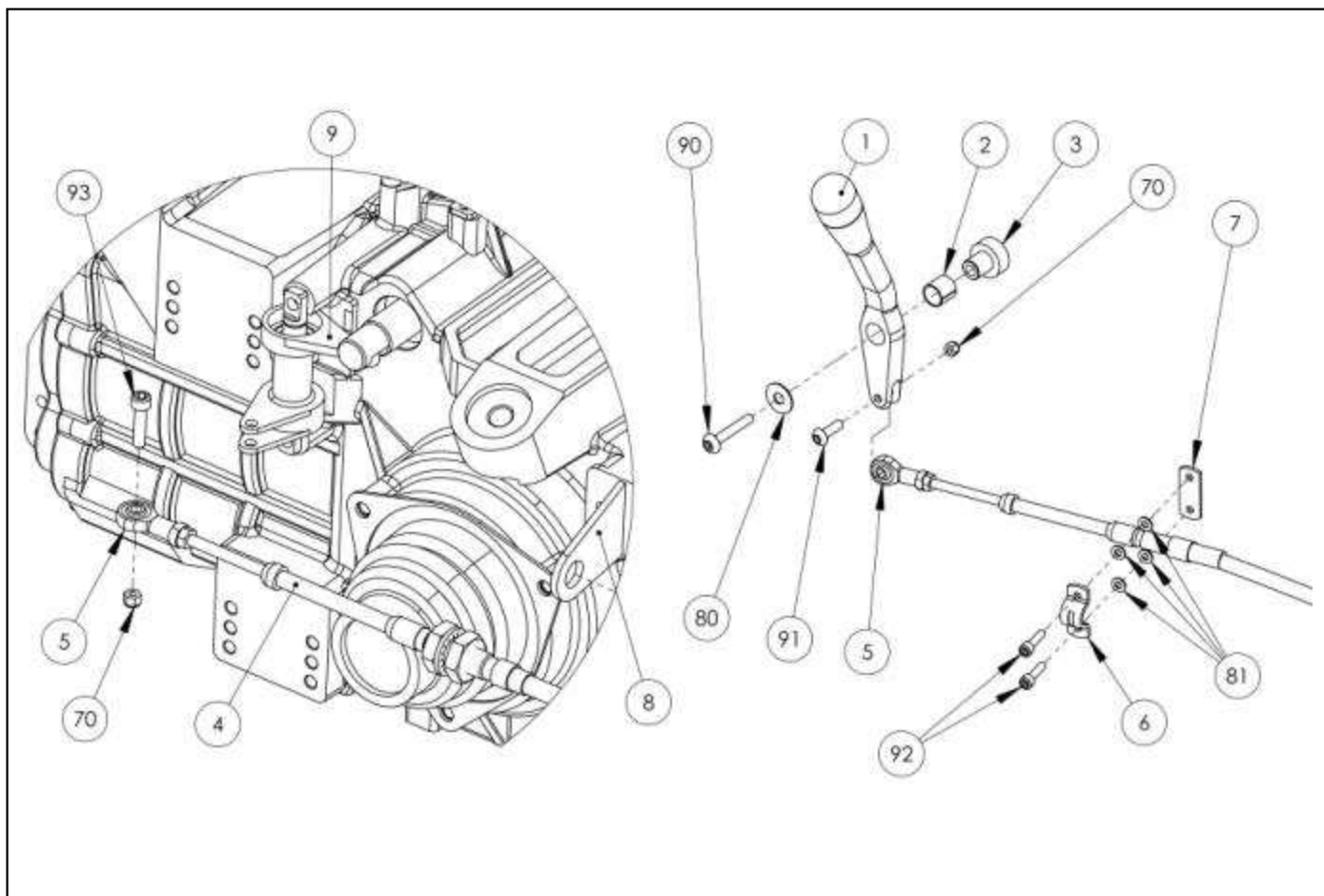
	A	B	C
28	X		
29			X

1B – 24B : Gearbox casing

It is allowed to repair the various fitting points if some metal has been torn off.

NOMENCLATURE
TECHNICAL REGULATIONS 2014

April 2nd, 2014



	A	B	C
1	X		
2			X
3	X		
4		X	
5	X		
6	X		
7	X		
8	X		
9	X		

	A	B	C
70			X
80			X
81			X
90			X
91			X
92			X
93			X

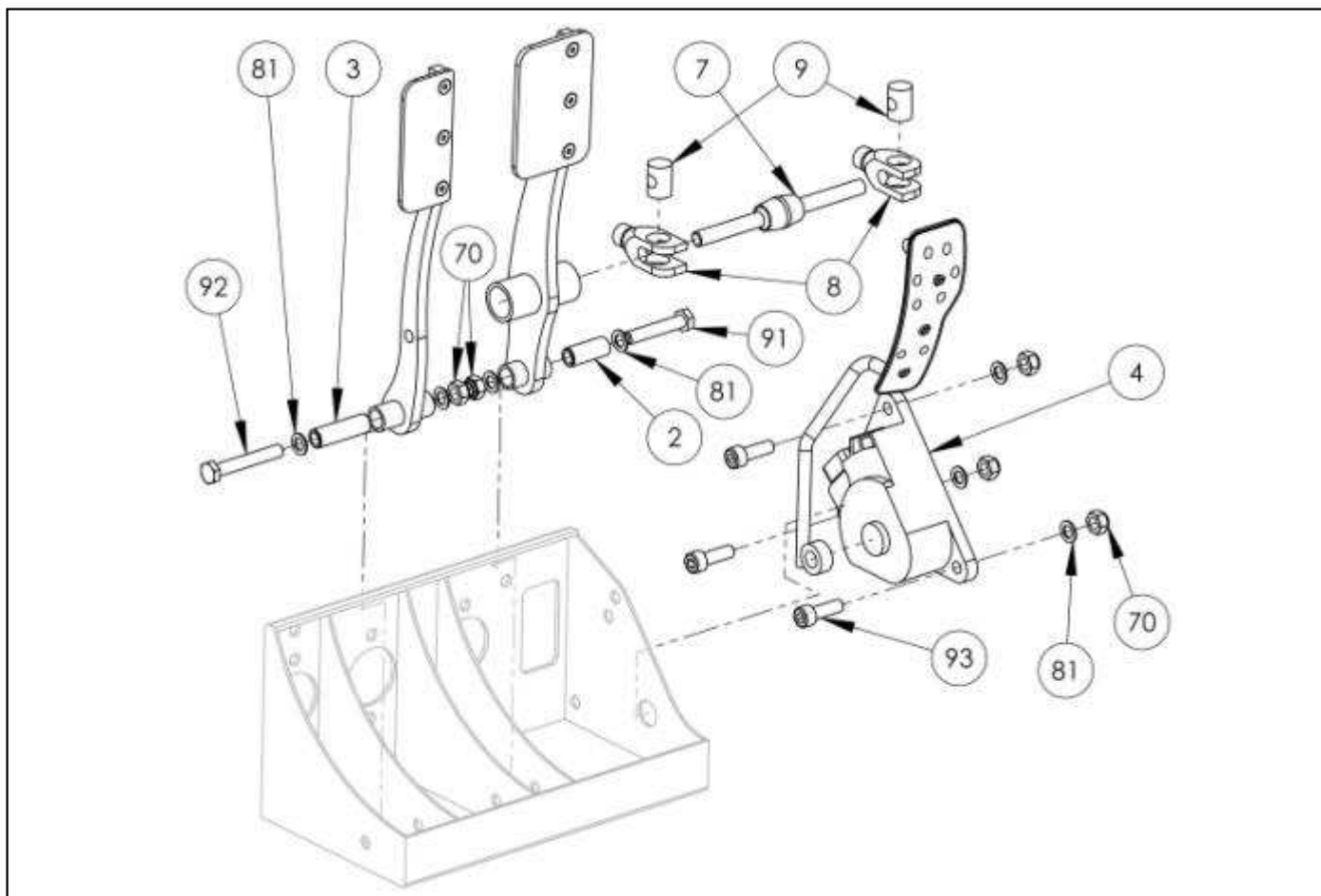
4B : « Push pull » cable

It is authorized : - to fit a heat resistant sleeve to the push pull cable.

Heat shields are forbidden.

**NOMENCLATURE
TECHNICAL REGULATIONS 2014**

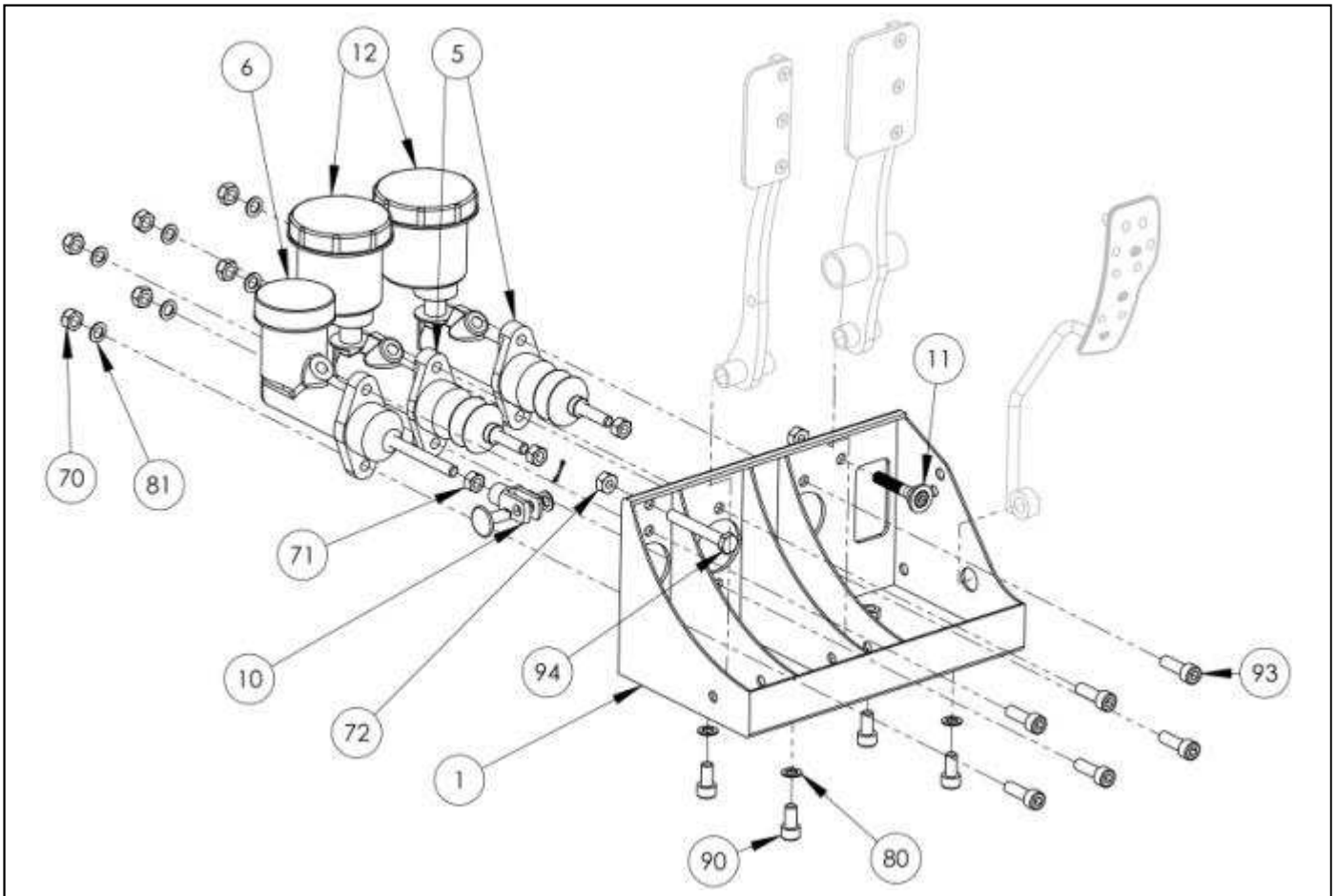
April 2nd, 2014



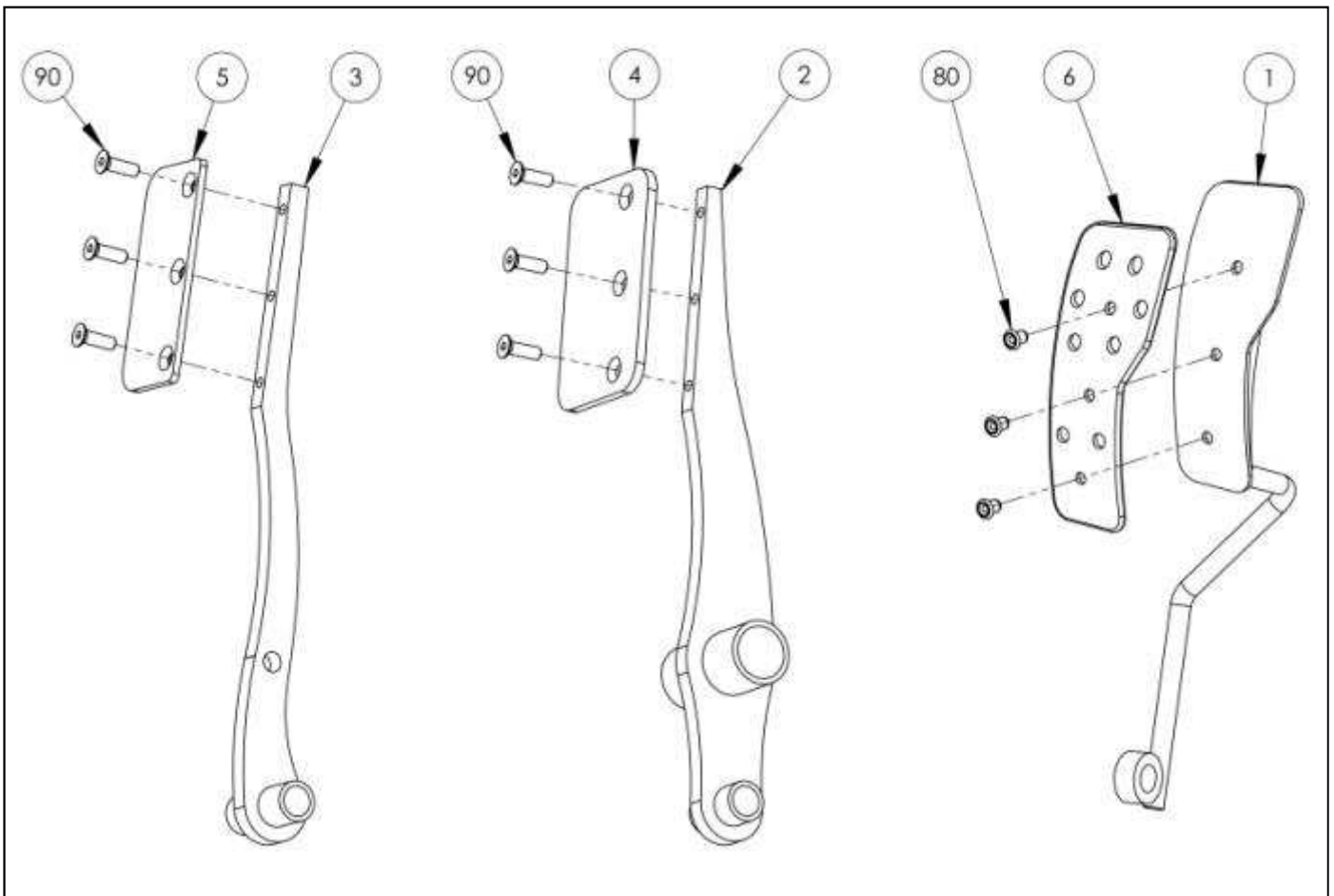
	A	B	C
2	X		
3	X		
4	X		
7	X		
8	X		
9	X		
70			X
81			X
91			X
92			X
93			X

**NOMENCLATURE
TECHNICAL REGULATIONS 2014**

April 2nd, 2014



	A	B	C
1	X		
5	X		
6	X		
10	X		
11	X		
12	X		
70			X
71			X
72			X
80			X
81			X
90			X
93			X
94			X



	A	B	C
1	X		
2	X		
3	X		
4		X	
5		X	
6	X		
80			X
90			X

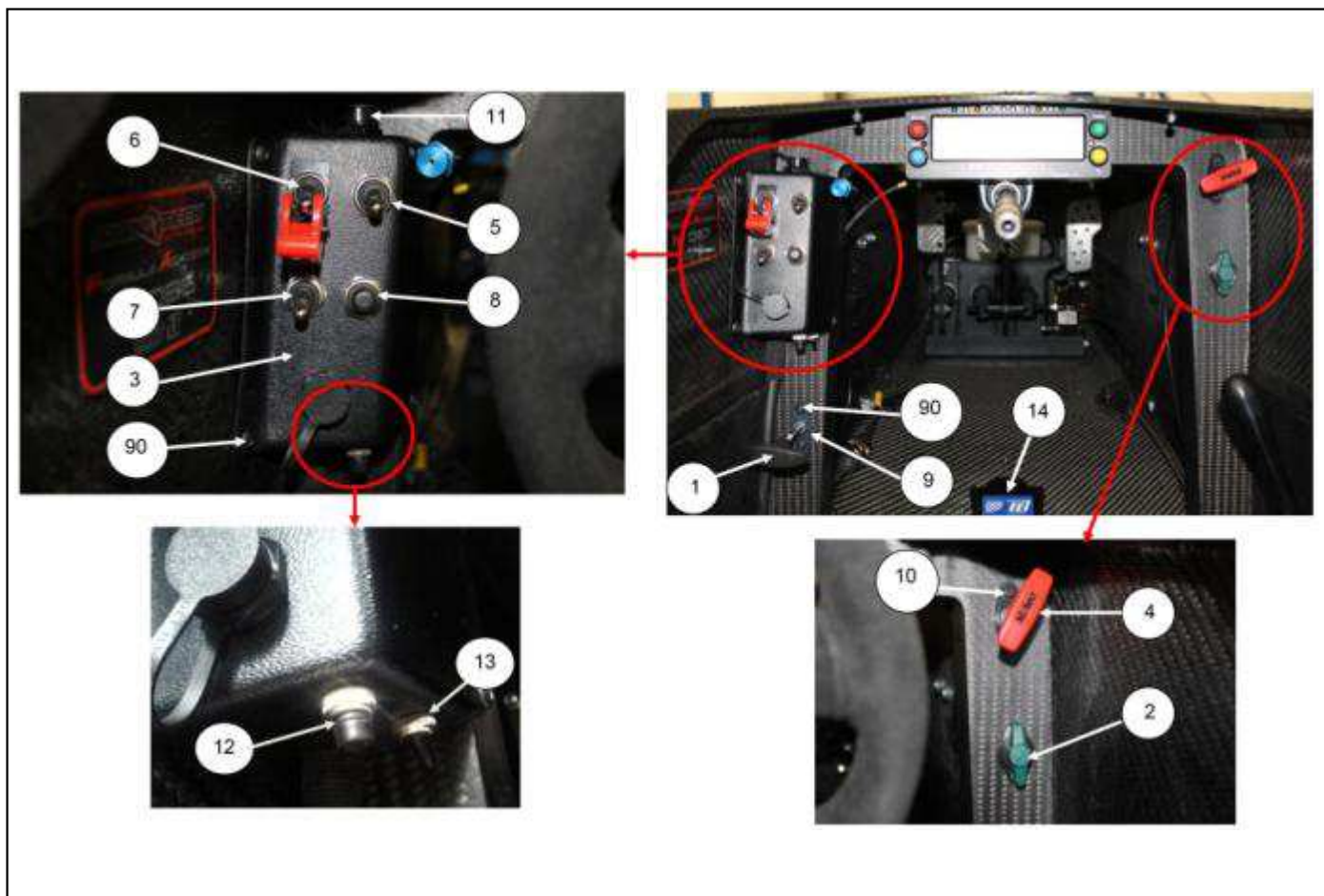
4B - 5B : Pedals pads

Pedal pads are free.

It is allowed to add spacers between pads (4 & 5) and levers (2 & 3).

NOMENCLATURE
TECHNICAL REGULATIONS 2014

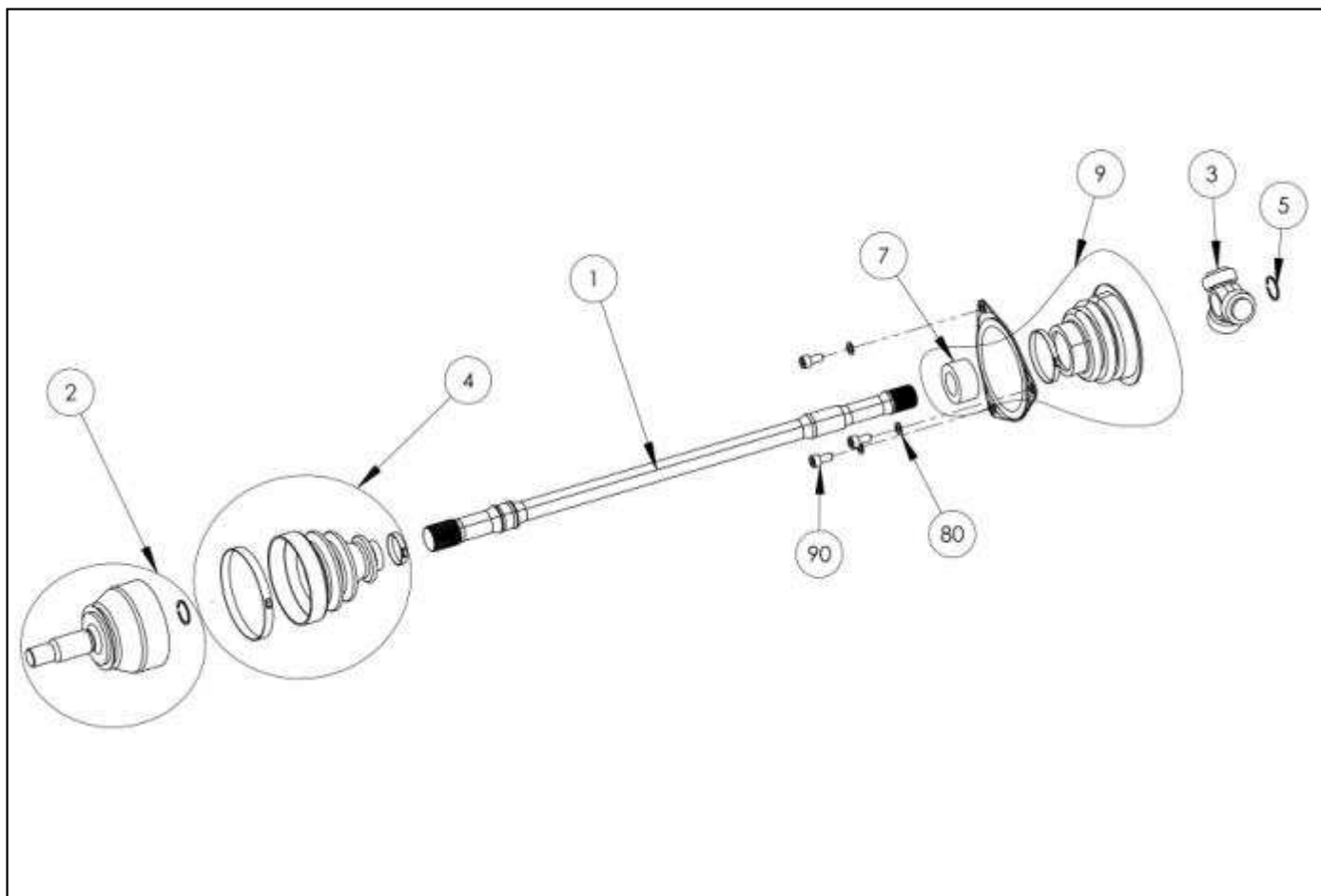
April 2nd, 2014



	A	B	C
1	X		
2	X		
3	X		
4	X		
5	X		
6	X		
7	X		
8	X		
9	X		
10	X		
11	X		
12	X		
13	X		
14		X	
90			X

14B : Kit PI DATA Logging sytem

It is allowed to install a PI kit. Only the constructor kit ref. **G04-20A015V1** is allowed.



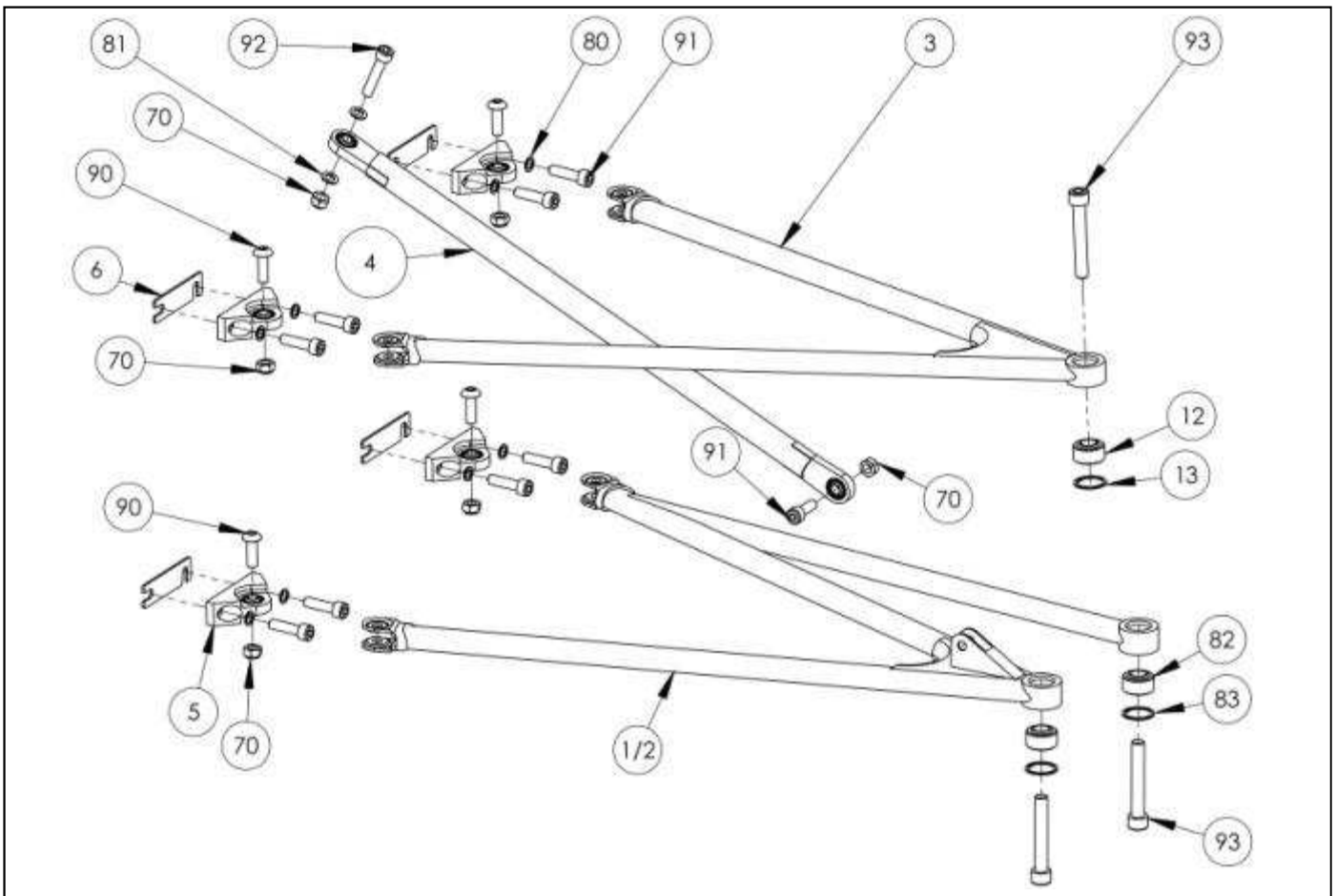
	A	B	C
1		X	
2	X		
3	X		
4	X		
5	X		
7	X		
9	X		
80			X
90			X

1B : Drive shaft

It is allowed to polish the driveshaft. No other treatment is allowed
The genuine engraving with the part reference must still be readable.

NOMENCLATURE
TECHNICAL REGULATIONS 2014

April 2nd, 2014



	A	B	C
1	X		
2		X	
3		X	
4		X	
5		X	
6		X	
12	X		
13	X		
70			X
80			X
81			X
90			X
91			X
92			X
93			X

2B - 3B - 4B : Right hand side wishbones and toe rod

It is allowed to add a heat protection to protect the parts from the exhaust radiation.

5B : Wishbone bracket

Their position on the gearbox are ruled. The position that is allowed is detailed in the 2014 User Manual.

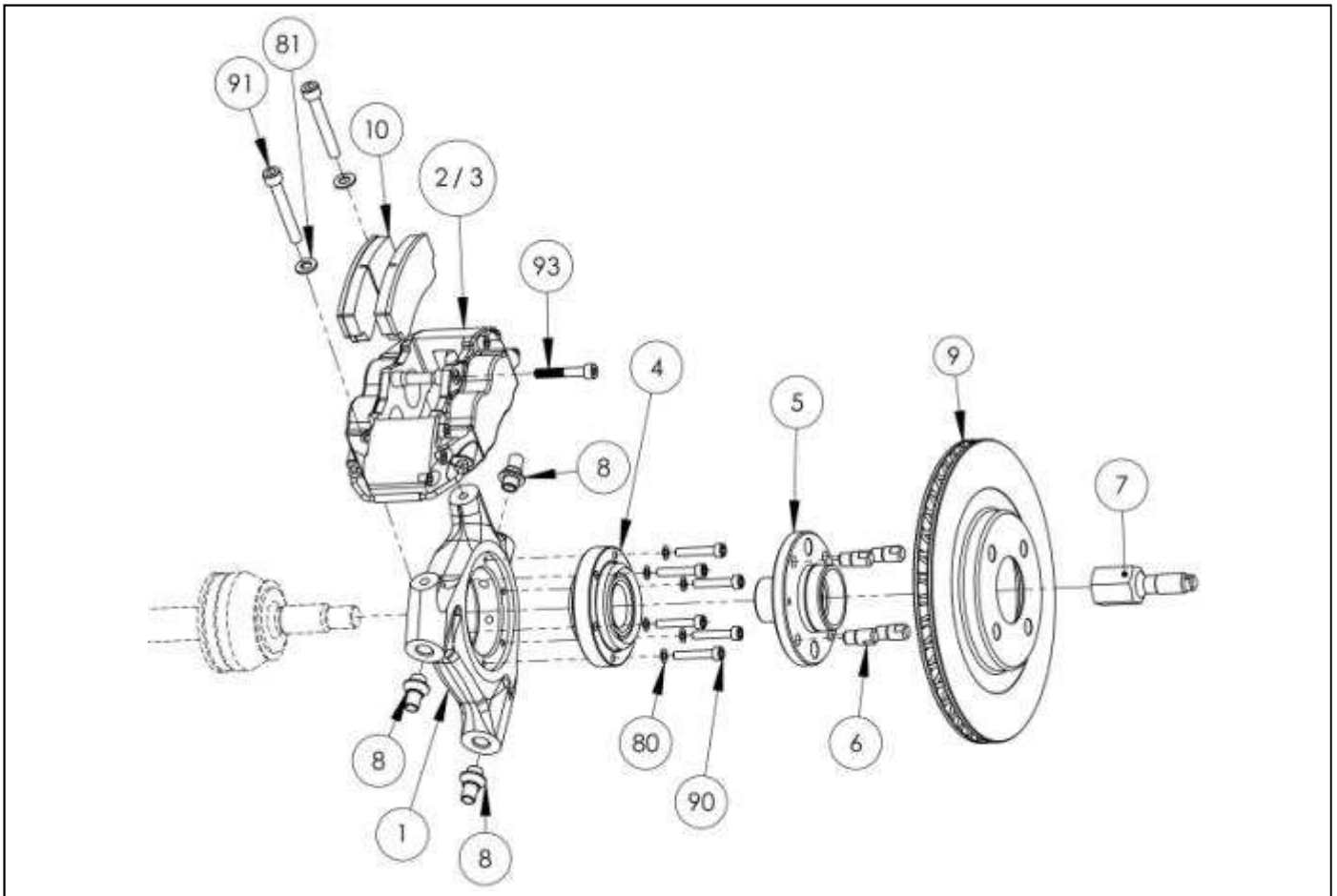
6B : Rear camber shims

Four (4) types of shim are allowed:

- 0,5 mm thick ref. G04-16A016V1
- 1,0 mm thick ref. G04-16A006V1
- 1,5 mm thick ref. G04-16A007V1
- 2,0 mm thick ref. G04-16A008V1.

NOMENCLATURE
TECHNICAL REGULATIONS 2014

April 2nd, 2014



	A	B	C
1	X		
2	X		
3	X		
4	X		
5	X		
6	X		
7	X		
8	X		
9		X	
10		X	
80			X
81			X
90	X		
91			X
93	X		

9B : Brake Disc

The minimum thickness between the two friction faces cannot be lower than 16,5 mm.

10B : Brake pads

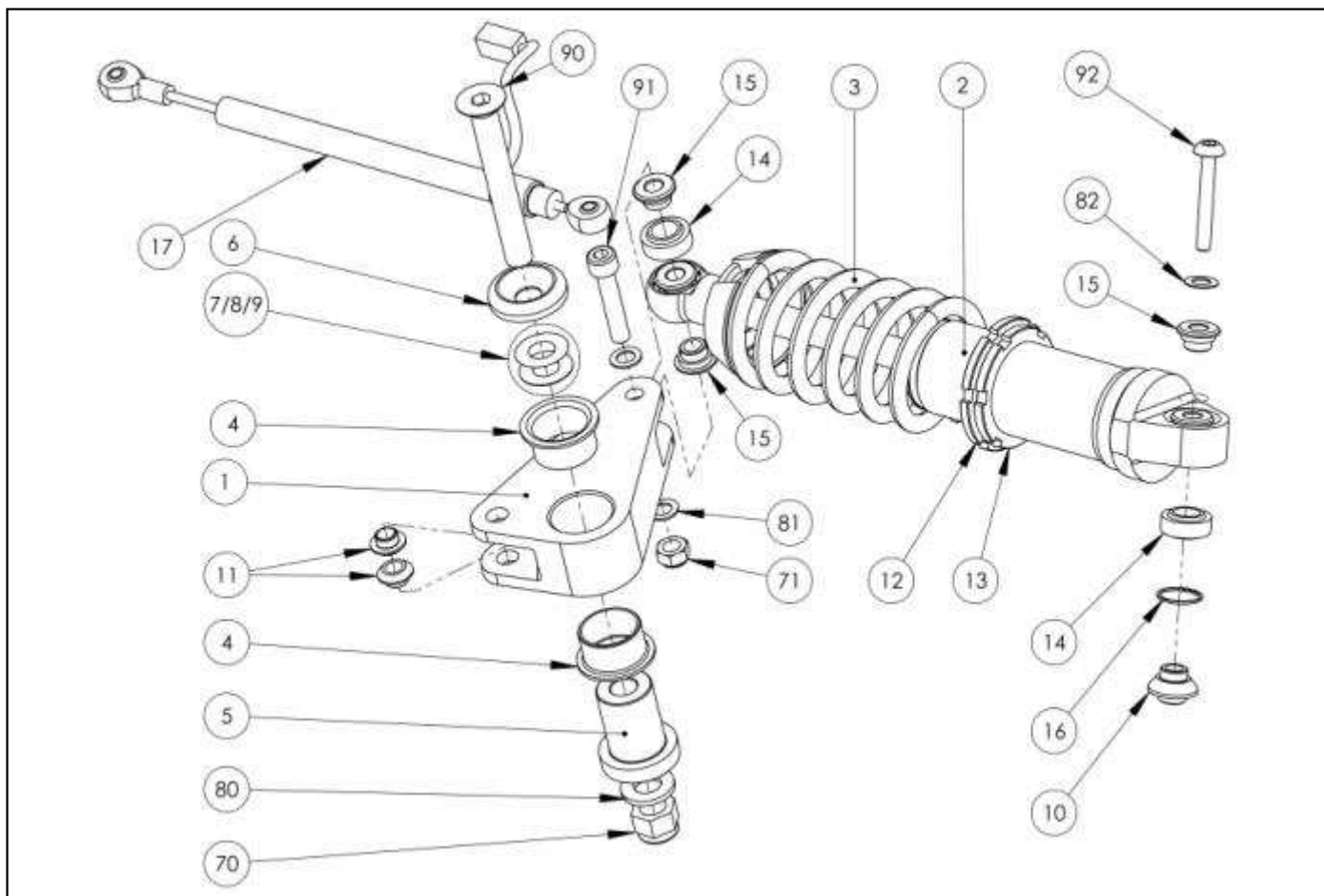
One type of brake pads is allowed:

- "Signatech" brake pads ref. : **G04-17B014V2**.



**NOMENCLATURE
TECHNICAL REGULATIONS 2014**

April 2nd, 2014



	A	B	C
1	X		
2	X		
3		X	
4	X		
5	X		
6	X		
7		X	
8		X	
9		X	
10	X		
11	X		
12	X		
13	X		
14	X		
15	X		

	A	B	C
16			X
17		X	
70			X
71			X
80			X
81			X
82			X
90			X
91			X
92			X

3B : Rear suspension spring

One type of spring is allowed.
-700 lbs/inch +/- 5%
Only the constructor spring ref. **G04-16D003V1** is allowed.

7B - 8B – 9B : Setting shims

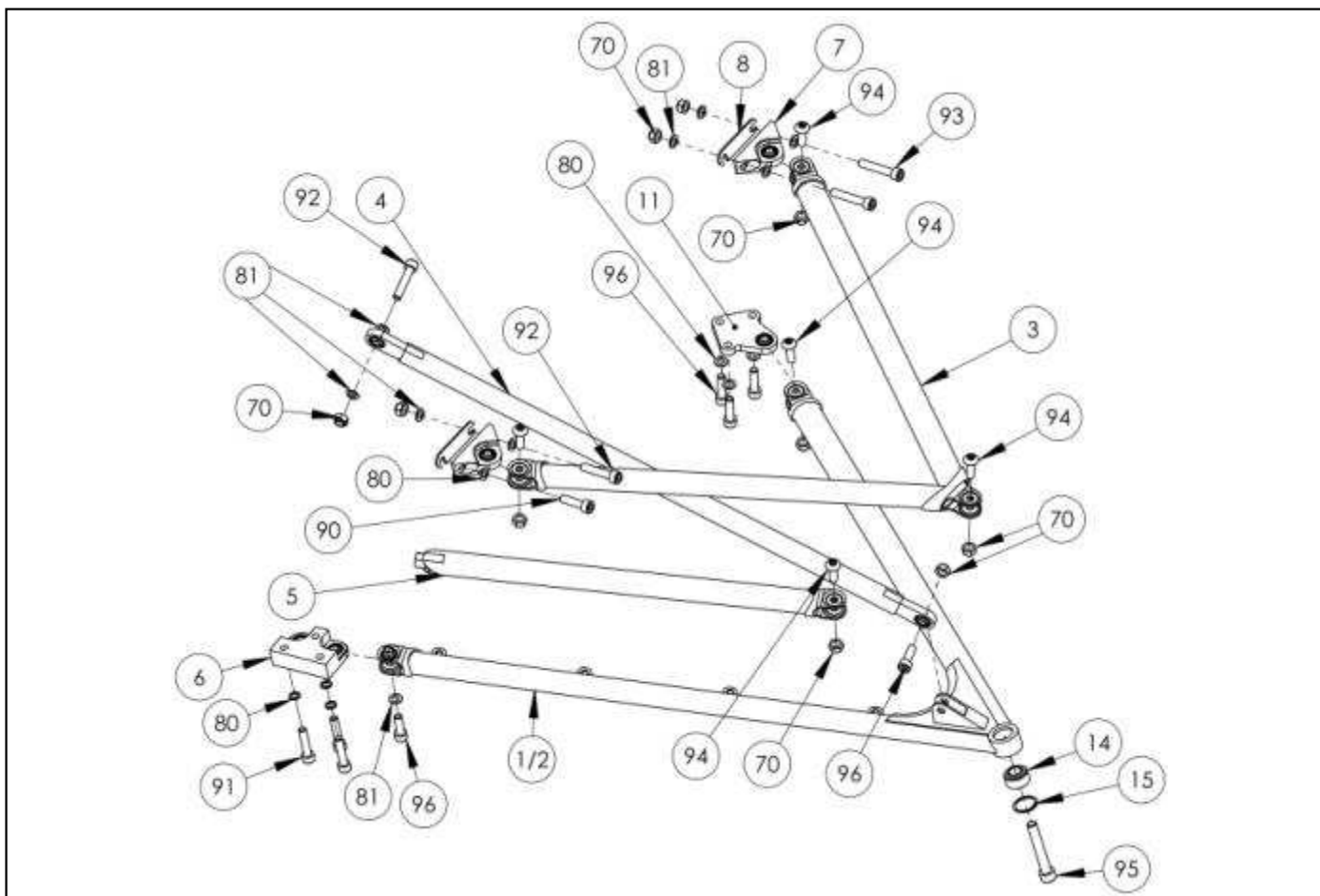
Three (3) types of shims are allowed :
- Thick 0,1 mm ref. **G04-16D007V1**
- Thick 0,05 mm ref. **G04-16D008V1**
- Thick 0,3 mm ref. **G04-16D009V1**

17B : Damper sensor

It is allowed to install a steering sensor. Only the constructor steering sensor ref. **G04-18A036V2** is allowed.

NOMENCLATURE
TECHNICAL REGULATIONS 2014

April 2nd, 2014



	A	B	C
1	X		
2	X		
3	X		
4	X		
5	X		
6		X	
7	X		
8		X	
11	X		
14	X		
15	X		

	A	B	C
70			X
80			X
81			X
90			X
91			X
92			X
93			X
94			X
95			X
96			X

6B : Lower wishbone bracket

It is allowed to do a mark (with a drill bit).

8B : Front camber shims

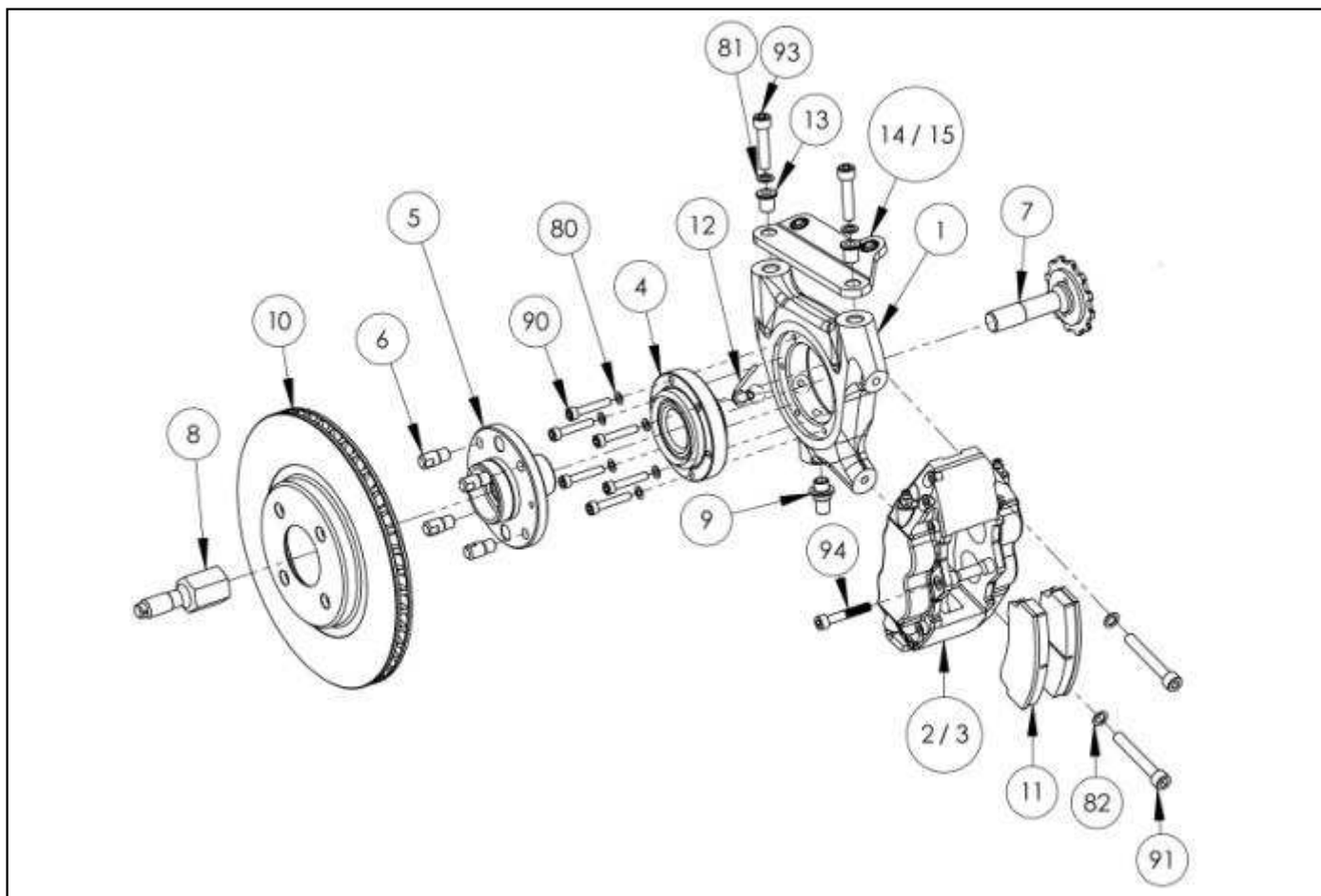
Three types of shim are allowed:

- 0,5 mm thick
- 1 mm thick
- 1,5 mm thick
- 2 mm thick

- ref. G04-17A016V1
- ref. G04-17A008V1
- ref. G04-17A009V1
- ref. G04-17A010V1.

NOMENCLATURE
TECHNICAL REGULATIONS 2014

April 2nd, 2014



	A	B	C
1	X		
2	X		
3	X		
4	X		
5	X		
6	X		
7	X		
8	X		
9	X		
10		X	
11		X	
12	X		
13	X		
14	X		

	A	B	C
15	X		
80			X
81			X
82			X
90	X		
91			X
93			X
94	X		

10B : Brake Disc

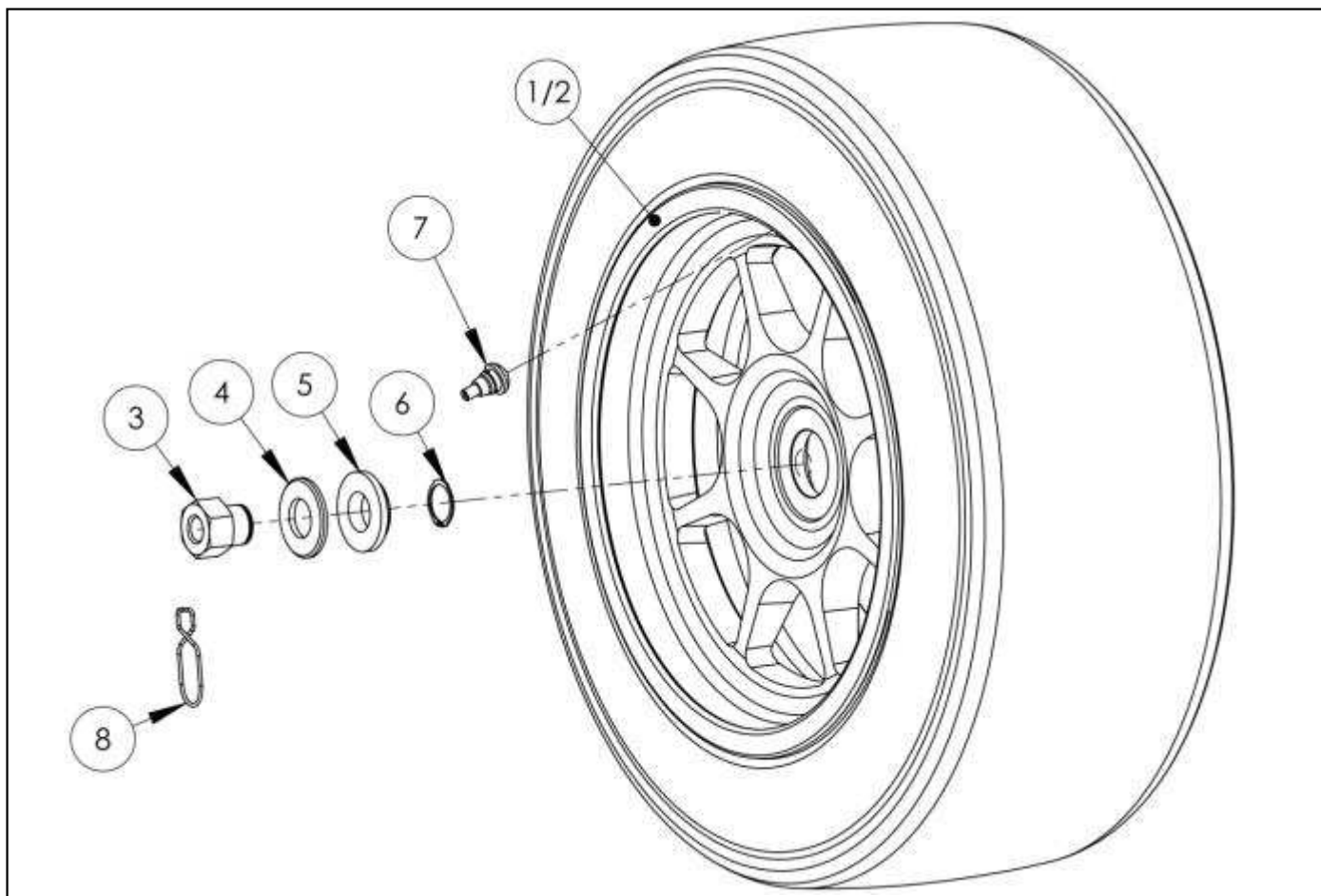
The minimum thickness between the two friction faces cannot be lower than 16.5 mm.

11B : Brake pads

One type of brake pads is allowed:

- "Signatech" brake pads ref. : G04-17B014V2.





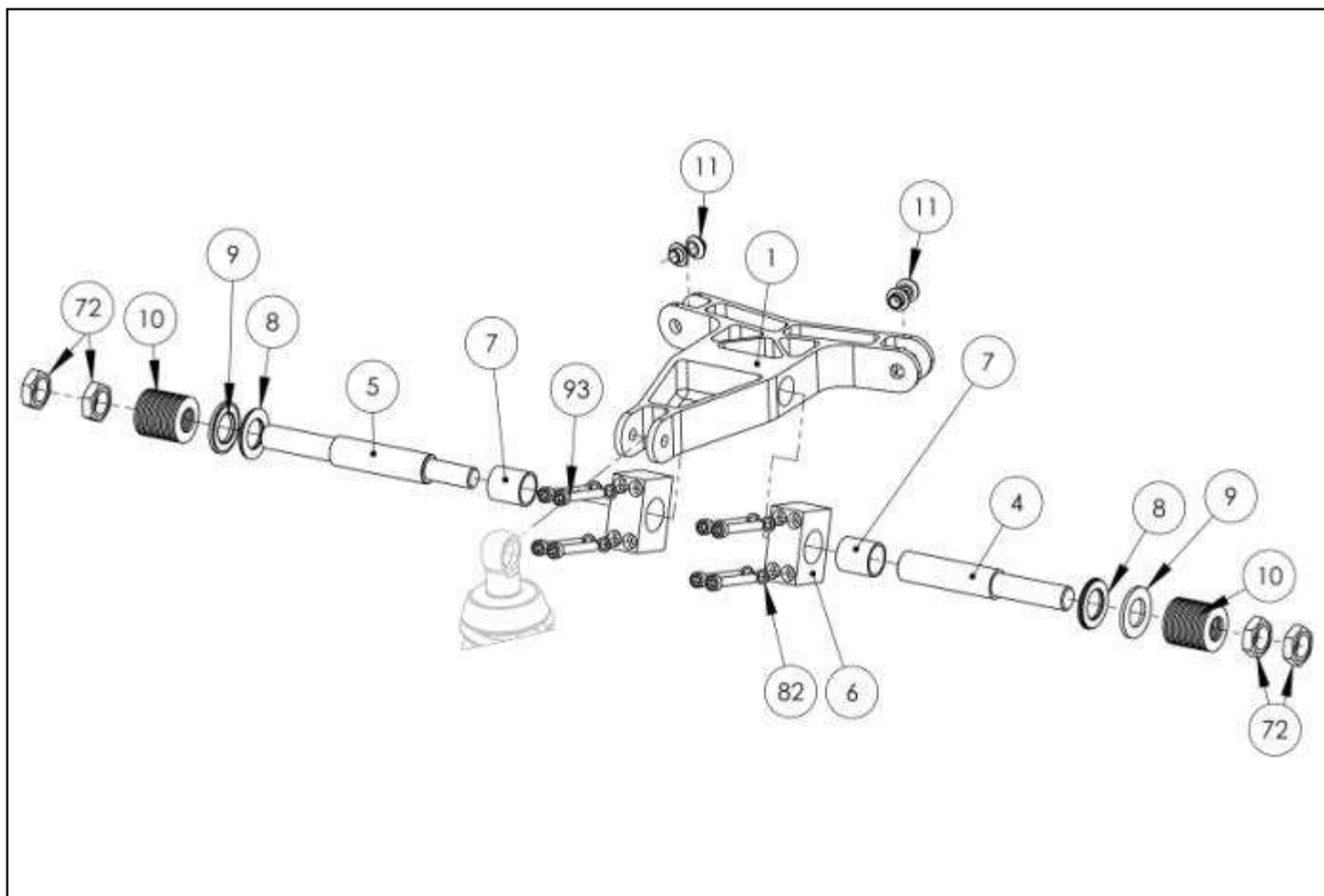
	A	B	C
1		X	
2		X	
3	X		
4	X		
5	X		
6	X		
7			X
8			X

1B - 2B : Wheels

It is allowed to :

- paint the wheel with no dimensional change. The use of colorless paint is forbidden.

Relief valves are forbidden.



	A	B	C
1	X		
4	X		
5	X		
6	X		
7	X		
8	X		
9	X		
10		X	
11	X		
72	X		
82			X
93			X

10B : « Belleville » washers

The stack and the number of « Belleville » washers are regulated according to the 2014 User Manual.

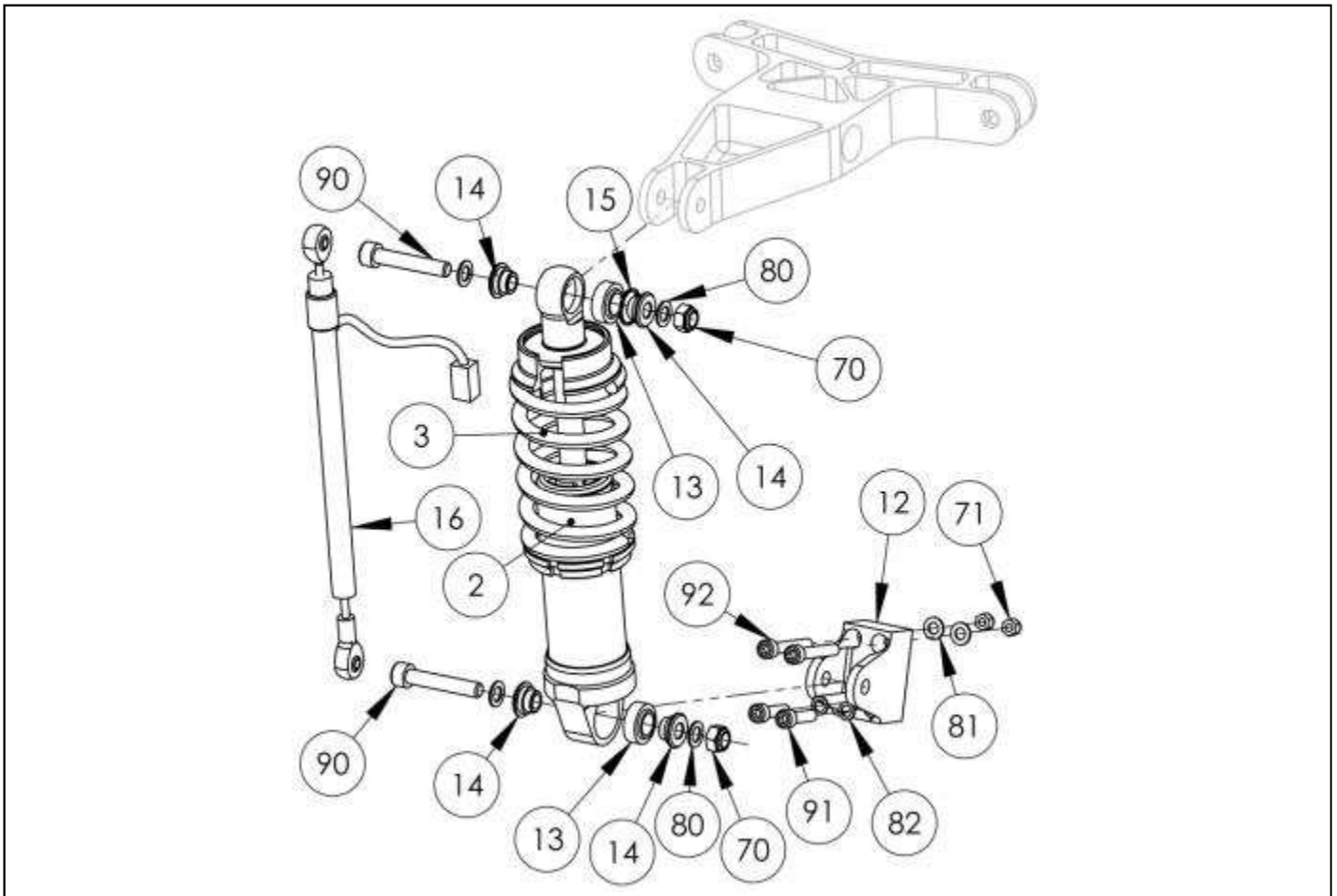
One only type of « Belleville » washer is allowed:

Reference : **G04-17D010V1**

Thickness : 1,75 + 0,04 et - 0,06 mm

NOMENCLATURE
TECHNICAL REGULATIONS 2014

April 2nd, 2014



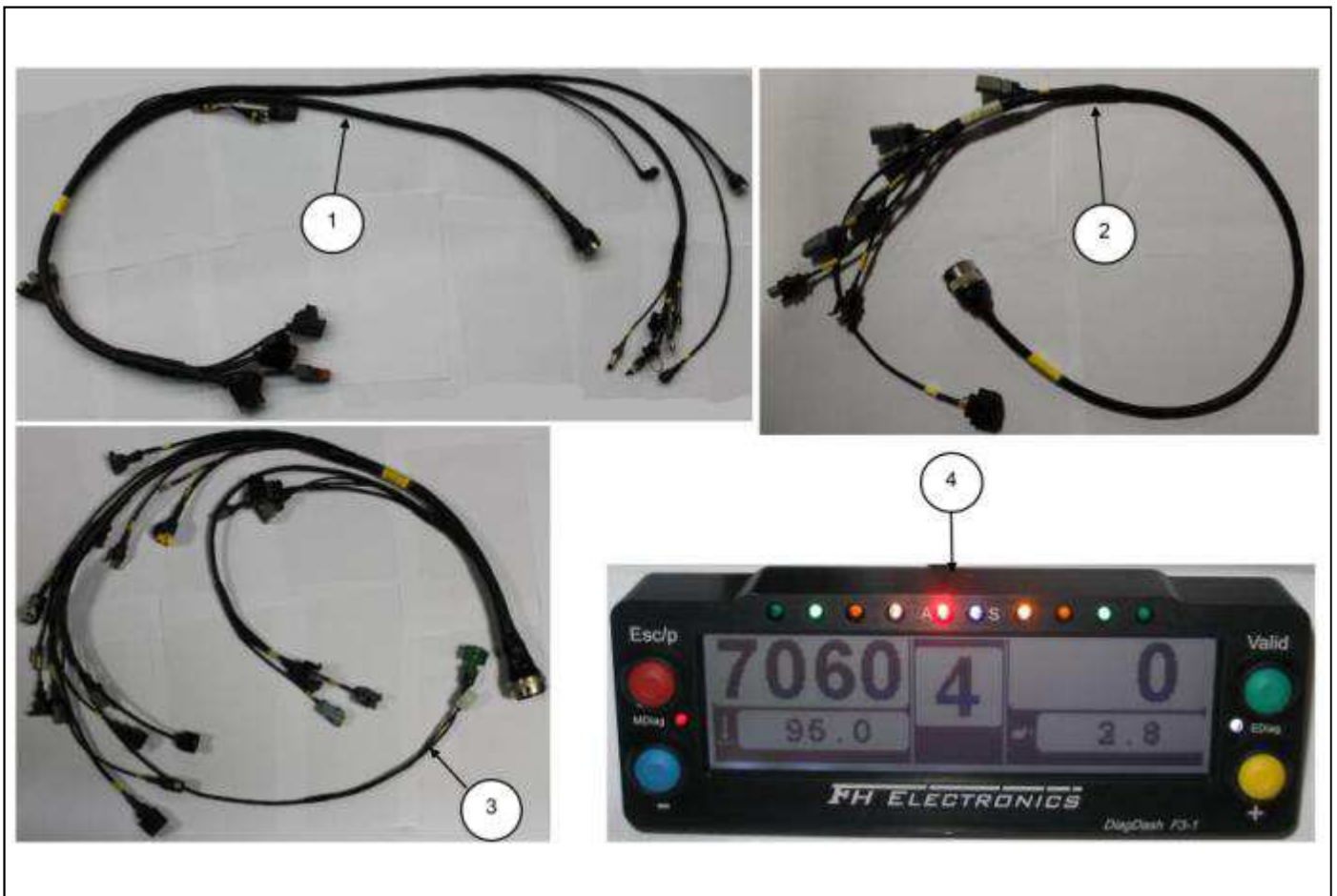
	A	B	C
2	X		
3		X	
12	X		
13	X		
14	X		
15	X		
16		X	
70			X
71			X
80			X
81			X
82			X
90			X
91			X
92			X

3B : Front suspension spring

One type of spring is allowed.
800 lbs/inch +/- 5%
Only the Constructor spring ref. **G04-17D003V1** is allowed.

16B : Damper sensor

It is allowed to install a steering sensor. Only the Constructor steering sensor ref. **G04-18A036V2** is allowed.

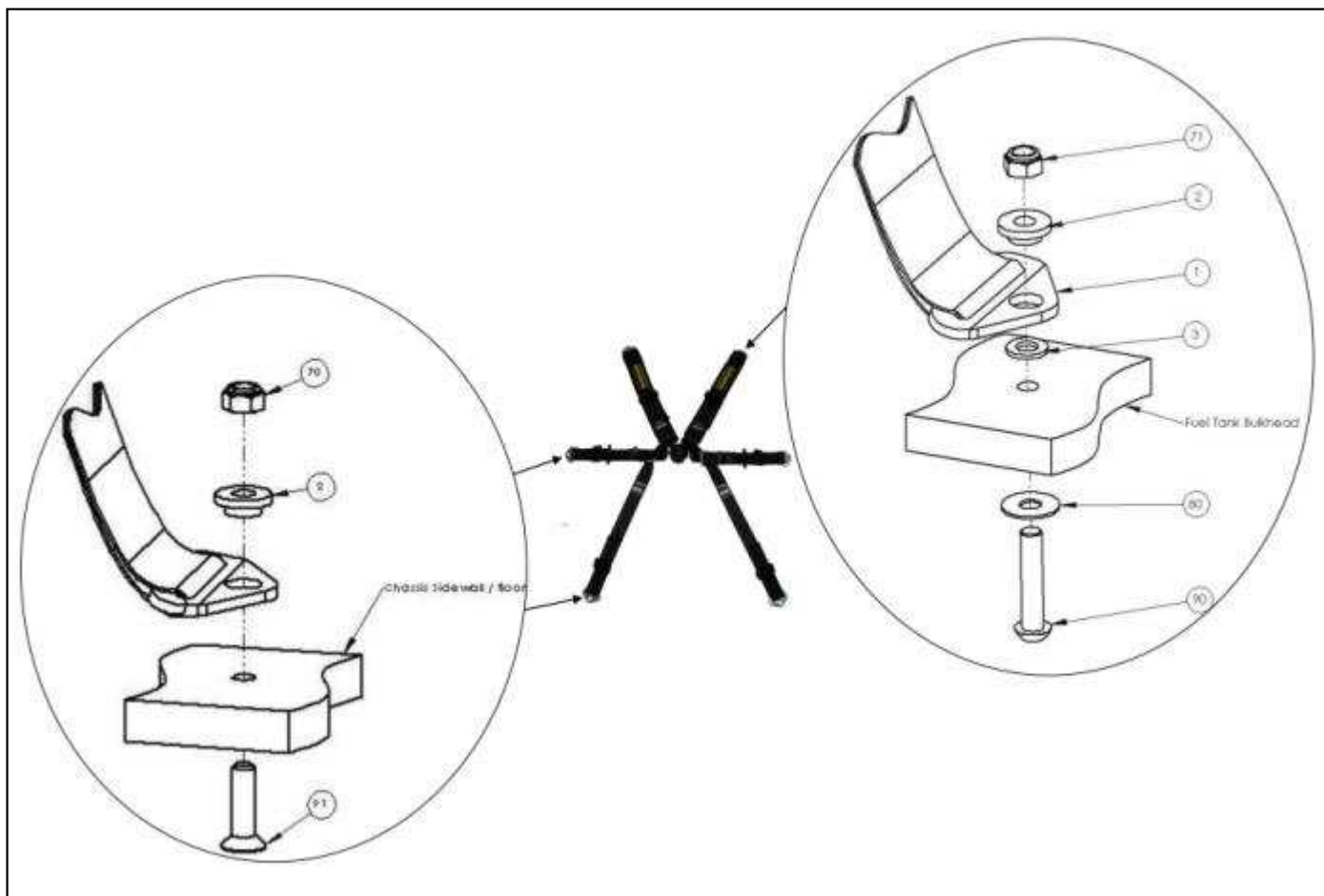


	A	B	C
1		X	
2		X	
3		X	
4	X		

1B - 2B - 3B : Wiring looms

It is allowed:

- to fit a heat resistant wrap/sheathing to wiring loom in the engine bay.
- to fit grommets to cut-outs in the firewall and bodywork intended for the passage of cabling.



	A	B	C
1		X	
2	X		
3	X		
70			X
71	X		
80			X
90			X
91			X

1B : Safety belts

It is allowed to add protections on the belts.

In case of violent crash, the safety belts are slack and loose the ability to absorb energy in case of another crash. Therefore, after any violent crash the safety belts must compulsorily be replaced.

The homologation label can be removed by a RENAULT Sport technical scrutineer.